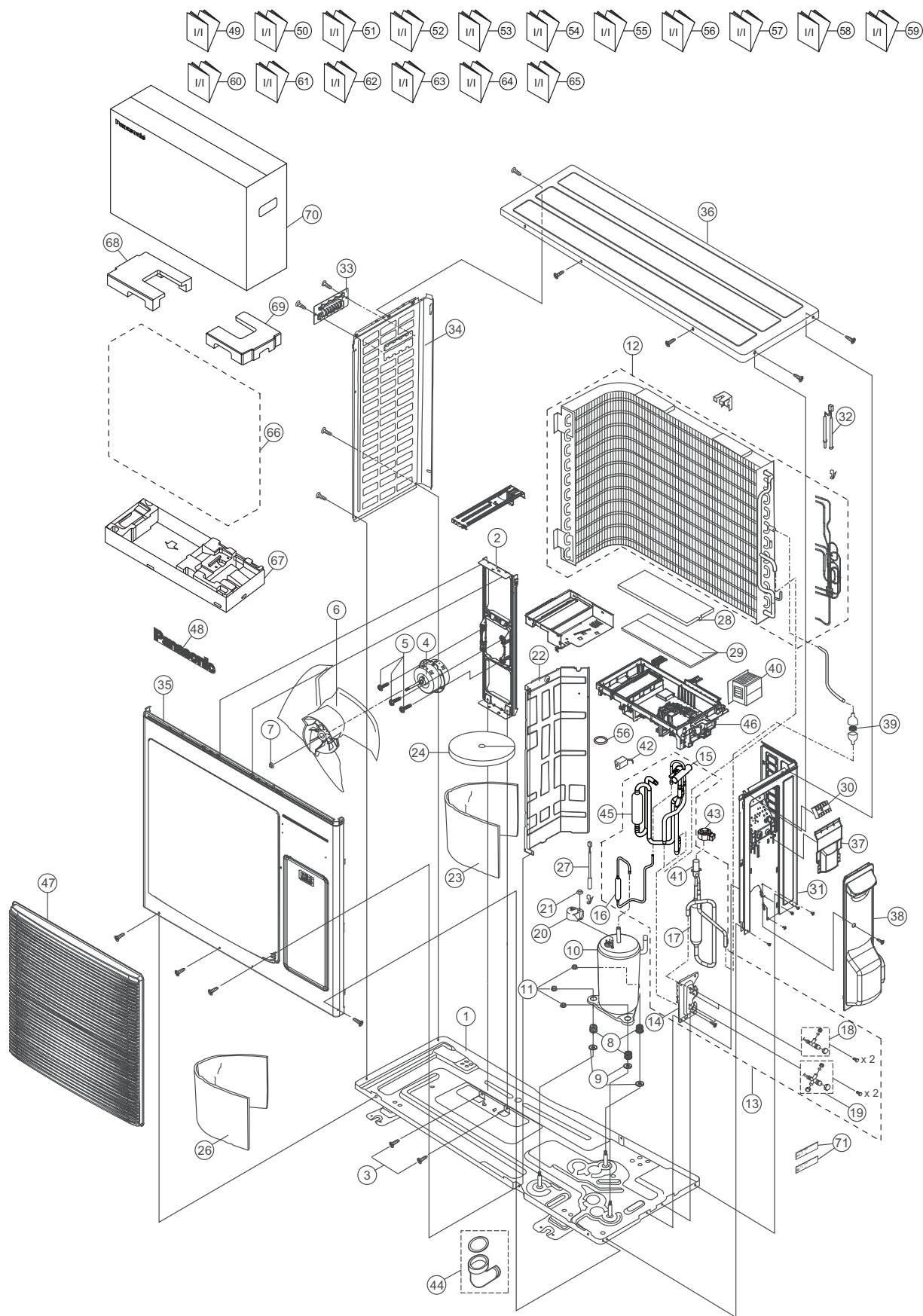


## 22.2.4 CU-TZ71ZKE



### Note

The above exploded view is for the purpose of parts disassembly and replacement.  
The non-numbered parts are not kept as standard service parts.

SAFETY	REF. NO.	PART NAME & DESCRIPTION	QTY.	CU-TZ71ZKE	REMARK
	1	BASE PAN ASSY	1	ACXD52K01770	
	2	FAN MOTOR BRACKET	1	ACXD54-00140	
	3	SCREW - FAN MOTOR BRACKET	2	ACXH55-07140	
⚠	4	FAN MOTOR	1	L6CAYYYL0169	O
	5	SCREW - FAN MOTOR MOUNT	4	CWH551106J	
	6	PROPELLER FAN ASSY	1	ACXH03K00070	
	7	NUT - PROPELLER FAN	1	CWH56053J	
	8	ANTI - VIBRATION BUSHING	3	CWH50077	
⚠	10	COMPRESSOR	1	9RD220XBA21	O
	11	NUT - COMPRESSOR MOUNT	3	CWH561096	
	12	CONDENSER	1	ACXB32C22970	O
	13	TUBE ASSY COMPLETE- 4 WAYS	1	ACXT00C43130	
	14	HOLDER COUPLING	1	ACXH35-00080	
	15	4-WAYS VALVE	1	ACXB00-00140	O
	16	DISCHARGE MUFFLER(4 W.VALVE)	1	CWB121013	
	17	RECEIVER	1	CWB14030	
	18	2-WAYS VALVE (LIQUID)	1	ACXB02-03230	O
	19	3-WAY VALVE (GAS)	1	CWB011363	O
	20	TERMINAL COVER	1	CWH171039A	
	21	NUT - TERMINAL COVER	1	CWH7080300J	
	22	SOUND PROOF BOARD	1	ACXH15-00230	
	23	SOUND PROOF MATERIAL - COMP. BODY	1	ACXG30-11560	
	24	SOUND PROOF MATERIAL - COMP. TOP	1	CWG302314	
	26	SOUND PROOF MATERIAL - SOUND PROOF BOARD	1	CWG302985	
⚠	27	SENSOR CO-COMP TEMP	1	ACXA50C17691	O
	28	CONTROL BOARD COVER-TOP	1	ACXH13-00490	
⚠	29	ELECTRONIC CONTROLLER - MAIN	1	ACXA73C90530R	O
⚠	30	TERMINAL BOARD ASSY	1	CWA28K1298	O
	31	CABINET SIDE PLATE CO.	1	ACXE04C03330	
⚠	32	SENSOR CO-AIR TEMP AND PIPE TEMP	1	CWA50C3079	O
	33	HANDLE	1	CWE161010	
	34	CABINET SIDE PLATE	1	ACXE04-00660A	
	35	CABINET FRONT PLATE ASSY	1	ACXE06K00050	
	36	CABINET TOP PLATE	1	ACXE03-00170A	
	37	PLATE - C. B. COVER TERMINAL	1	CWH131470	
	38	CONTROL BOARD COVER CO.	1	ACXH13C00170	
	39	STRAINER	1	CWB111032	
⚠	40	REACTOR	1	G0C392J00040	O
	41	EXPANSION VALVE	1	ACXB05-01250	
⚠	42	V-COIL COMPLETE (4-WAY VALVE)	1	ACXA43C00250	O
⚠	43	V-COIL COMPLETE (EXP.VALVE)	1	ACXA43C07230	O
	44	ACCESSORY-COMPLETE	1	ACXH82C21740	
	45	ACCUMULATOR	1	ACXB13-00010	
	46	CONTROL BOARD CASING	1	ACXH10-00760	
	47	DISCHARGE GRILLE	1	ACXE20-00260	
	48	PANASONIC BADGE	1	CWE373439	
	49	INSTALLATION INSTRUCTION	1	ACXF60-47850	

SAFETY	REF. NO.	PART NAME & DESCRIPTION	QTY.	CU-TZ71ZKE	REMARK
	50	INSTALLATION INSTRUCTION	1	ACXF60-47860	
	51	INSTALLATION INSTRUCTION	1	ACXF60-47870	
	52	INSTALLATION INSTRUCTION	1	ACXF60-47880	
	53	INSTALLATION INSTRUCTION	1	ACXF60-47890	
	54	INSTALLATION INSTRUCTION	1	ACXF60-47900	
	55	INSTALLATION INSTRUCTION	1	ACXF60-47910	
	56	INSTALLATION INSTRUCTION	1	ACXF60-47920	
	57	INSTALLATION INSTRUCTION	1	ACXF60-47930	
	58	INSTALLATION INSTRUCTION	1	ACXF60-47940	
	59	INSTALLATION INSTRUCTION	1	ACXF60-47950	
	60	INSTALLATION INSTRUCTION	1	ACXF60-49380	
	61	INSTALLATION INSTRUCTION	1	ACXF60-49390	
	62	INSTALLATION INSTRUCTION	1	ACXF60-49400	
	63	INSTALLATION INSTRUCTION	1	ACXF60-49410	
	64	INSTALLATION INSTRUCTION	1	ACXF60-49420	
	65	INSTALLATION INSTRUCTION	1	ACXF60-49430	
	66	BAG	1	CWG861461	
	67	BASE BOARD-COMPLETE	1	ACXG62C00230	
	68	SHOCK ABSORBER - TOP LEFT	1	ACXG70-14460A	
	69	SHOCK ABSORBER - TOP RIGHT	1	ACXG70-14470A	
	70	C.C.CASE	1	ACXG50-48883	
	71	MODEL LABEL	2	ACXF85-99990	

(NOTE)

- All parts are supplied from PAPAMY, Malaysia (Vendor Code: 00029488).
- "O" marked parts are recommended to be kept in stock.