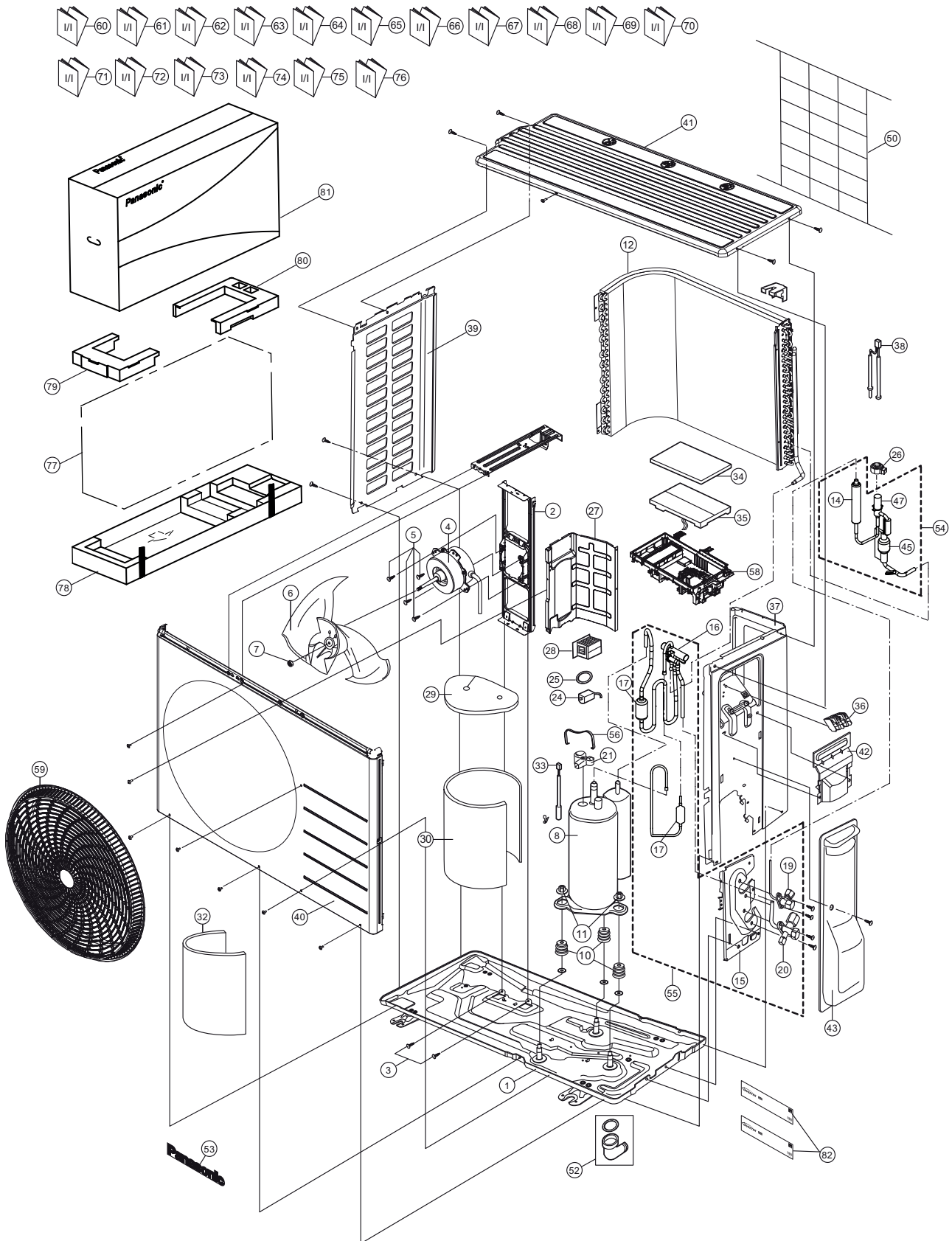


22.2 Outdoor Unit

22.2.1 CU-Z20ZKE CU-Z25ZKE



Note
The above exploded view is for the purpose of parts disassembly and replacement.
The non-numbered parts are not kept as standard service parts.

SAFETY	REF. NO.	PART NAME & DESCRIPTION	QTY.	CU-Z20ZKE	CU-Z25ZKE	REMARK
	1	BASE PAN ASSY	1	ACXD52K00150	←	
	2	FAN MOTOR BRACKET	1	CWD541157	←	
	3	SCREW - FAN MOTOR BRACKET	2	ACXH55-07140	←	
⚠	4	FAN MOTOR	1	L6CAYYYL0155	←	O
	5	SCREW - FAN MOTOR MOUNT	4	CWH55252J	←	
	6	PROPELLER FAN ASSY	1	CWH03K1100	←	
	7	NUT - PROPELLER FAN	1	CWH56053J	←	
⚠	8	COMPRESSOR	1	9GS075XCA21	←	O
	10	ANTI - VIBRATION BUSHING	3	ACXH50-00140	←	
	11	NUT - COMPRESSOR MOUNT	3	CWH561096	←	
	12	CONDENSER	1	ACXB32C26860	←	O
	14	DISCHARGE MUFFLER	1	CWB121021	←	
	15	HOLDER COUPLING	1	CWH351233	←	
	16	4-WAYS VALVE	1	ACXB00-01290	←	O
	17	DISCHARGE MUFFLER(4 W.VALVE)	2	CWB121010	←	
	19	2-WAYS VALVE (LIQUID)	1	ACXB02-03330	←	O
	20	3-WAY VALVE (GAS)	1	ACXB01-04540	←	O
	21	TERMINAL COVER	1	CWH171041	←	
⚠	24	V-COIL COMPLETE - 4-WAY VALVE	1	ACXA43C00250	←	O
	25	O-RING	1	ACXB81-06510	←	
⚠	26	V-COIL COMPLETE - EXP.VALVE	1	ACXA43C06110	←	O
	27	SOUND PROOF BOARD	1	CWH151428	←	
⚠	28	REACTOR	1	G0C392J00028	←	O
	29	SOUND PROOF MATERIAL - COMP. TOP	1	CWG302737	←	
	30	SOUND PROOF MATERIAL - COMP. BODY	1	ACXG30-11530	←	
	32	SOUND PROOF MATERIAL	1	ACXG30-13980	←	
⚠	33	SENSOR CO-COMP TEMP	1	ACXA50C17680	←	O
	34	CONTROL BOARD COVER-TOP	1	ACXH13-00450	←	
⚠	35	ELECTRONIC CONTROLLER - MAIN	1	ACXA73C94820R	ACXA73C94830R	O
⚠	36	TERMINAL BOARD ASSY	1	CWA28K1298	←	O
	37	CABINET SIDE PLATE CO.	1	ACXE04C00460	←	
⚠	38	SENSOR CO-AIR TEMP AND PIPE TEMP	1	CWA50C3267	←	O
	39	CABINET SIDE PLATE	1	CWE041858A	←	
	40	CABINET FRONT PLATE CO.	1	CWE06C1563	←	
	41	CABINET TOP PLATE	1	CWE031230A	←	
	42	PLATE - C. B. COVER TERMINAL	1	CWH131301	←	
	43	CONTROL BOARD COVER CO.	1	CWH13C1359	←	
	45	STRAINER	1	CWB11094	←	
	47	EXPANSION VALVE	1	ACXB05-01260	←	
	50	WIRE NET	1	CWD041212A	←	
	52	ACCESSORY-COMPLETE	1	ACXH82C21740	←	
	53	PANASONIC BADGE	1	CWE373439	←	
	54	TUBE ASSY COMPLETE - EXP.VALVE	1	ACXT00C43610	←	
	55	TUBE ASSY COMPLETE- 4 WAYS VALVE	1	ACXT00C44290	←	
	56	PLATE SPRING	1	CWH71044	←	
	58	CONTROL BOARD CASING	1	ACXH10-00750	←	
	59	DISCHARGE GRILLE	1	CWE201306	←	

SAFETY	REF. NO.	PART NAME & DESCRIPTION	QTY.	CU-Z20ZKE	CU-Z25ZKE	REMARK
	60	INSTALLATION INSTRUCTION	1	ACXF60-48620	←	
	61	INSTALLATION INSTRUCTION	1	ACXF60-48630	←	
	62	INSTALLATION INSTRUCTION	1	ACXF60-48640	←	
	63	INSTALLATION INSTRUCTION	1	ACXF60-48650	←	
	64	INSTALLATION INSTRUCTION	1	ACXF60-48660	←	
	65	INSTALLATION INSTRUCTION	1	ACXF60-48670	←	
	66	INSTALLATION INSTRUCTION	1	ACXF60-48680	←	
	67	INSTALLATION INSTRUCTION	1	ACXF60-48690	←	
	68	INSTALLATION INSTRUCTION	1	ACXF60-48700	←	
	69	INSTALLATION INSTRUCTION	1	ACXF60-48710	←	
	70	INSTALLATION INSTRUCTION	1	ACXF60-48720	←	
	71	INSTALLATION INSTRUCTION	1	ACXF60-49500	←	
	72	INSTALLATION INSTRUCTION	1	ACXF60-49510	←	
	73	INSTALLATION INSTRUCTION	1	ACXF60-49520	←	
	74	INSTALLATION INSTRUCTION	1	ACXF60-49530	←	
	75	INSTALLATION INSTRUCTION	1	ACXF60-49540	←	
	76	INSTALLATION INSTRUCTION	1	ACXF60-49550	←	
	77	BAG	1	CWG861078	←	
	78	BASE BOARD-COMplete	1	CWG62C1223	←	
	79	SHOCK ABSORBER - LEFT	1	ACXG70-14430A	←	
	80	SHOCK ABSORBER - RIGHT	1	ACXG70-14420A	←	
	81	C.C.CASE	1	ACXG50-48863	←	
	82	MODEL LABEL	2	ACXF87-01540	ACXF87-01550	

(NOTE)

- All parts are supplied from PAPAMY, Malaysia (Vendor Code: 00029488).
- "O" marked parts are recommended to be kept in stock.