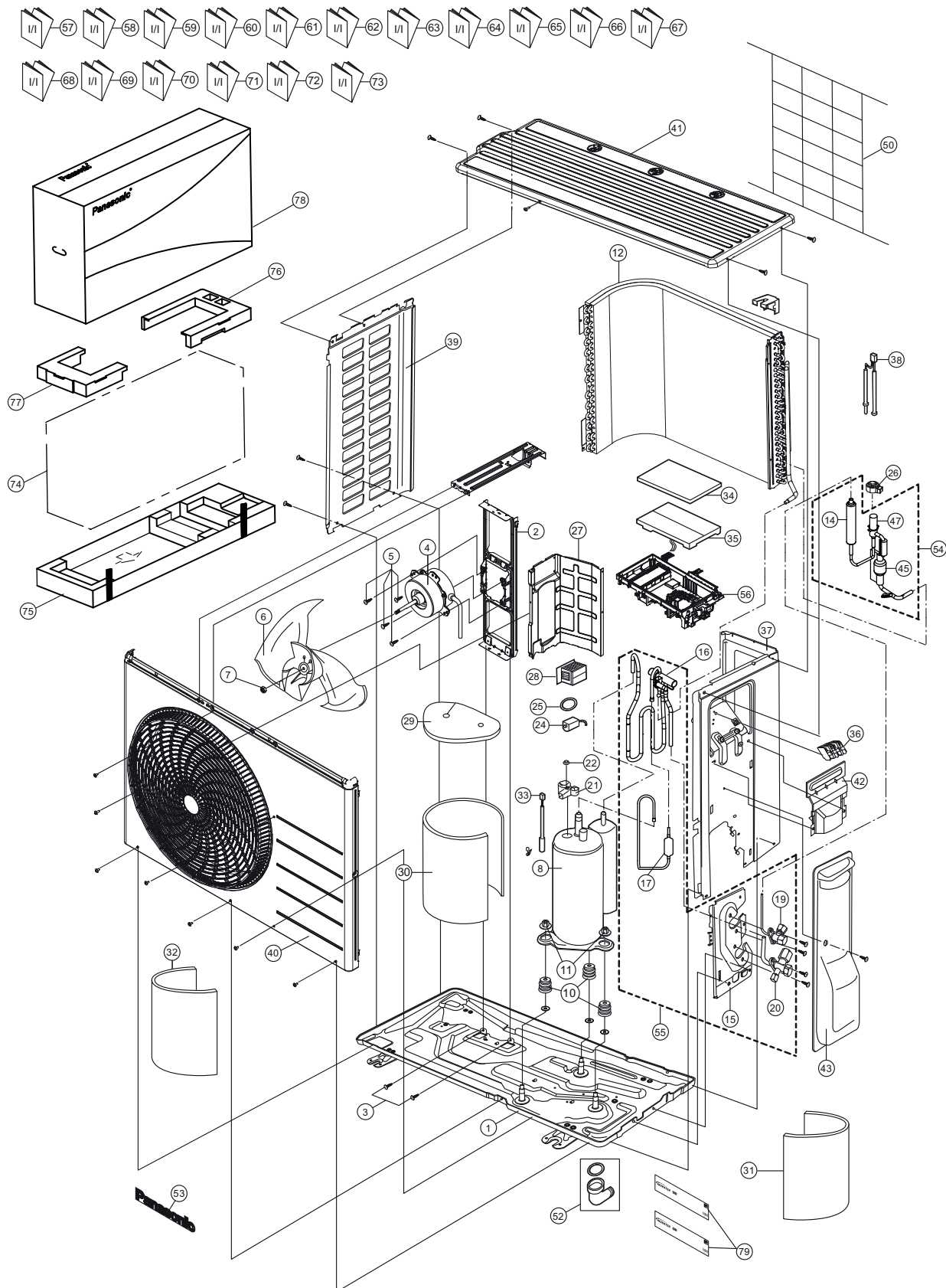


22.2.2 CU-Z35ZKE CU-Z42ZKE



Note
 The above exploded view is for the purpose of parts disassembly and replacement.
 The non-numbered parts are not kept as standard service parts.

| SAFETY | REF. NO. | PART NAME & DESCRIPTION | QTY. | CU-Z35ZKE | CU-Z42ZKE | REMARK |
|--------|----------|-----------------------------------|------|---------------|---------------|--------|
| | 1 | BASE PAN ASSY | 1 | CWD52K1399 | ← | |
| | 2 | FAN MOTOR BRACKET | 1 | CWD541157 | ← | |
| | 3 | SCREW - FAN MOTOR BRACKET | 2 | ACXH55-07140 | ← | |
| ⚠ | 4 | FAN MOTOR | 1 | L6CAYYYL0156 | ← | O |
| | 5 | SCREW - FAN MOTOR MOUNT | 4 | CWH55252J | ← | |
| | 6 | PROPELLER FAN ASSY | 1 | CWH03K1100 | ← | |
| | 7 | NUT - PROPELLER FAN | 1 | CWH56053J | ← | |
| ⚠ | 8 | COMPRESSOR | 1 | 9RS102XRA21 | ← | O |
| | 10 | ANTI - VIBRATION BUSHING | 3 | CWH50077 | ← | |
| | 11 | NUT - COMPRESSOR MOUNT | 3 | CWH561096 | ← | |
| | 12 | CONDENSER | 1 | ACXB32C26860 | ← | O |
| | 14 | DISCHARGE MUFFLER | 1 | CWB121021 | ← | |
| | 15 | HOLDER COUPLING | 1 | CWH351233 | ← | |
| | 16 | 4-WAYS VALVE | 1 | ACXB00-01290 | ← | O |
| | 17 | DISCHARGE MUFFLER(4 W.VALVE) | 1 | CWB121010 | ← | |
| | 19 | 2-WAYS VALVE (LIQUID) | 1 | ACXB02-03330 | ACXB02-03310 | O |
| | 20 | 3-WAY VALVE (GAS) | 1 | ACXB01-04540 | ACXB01-02280 | O |
| | 21 | TERMINAL COVER | 1 | CWH171039A | ← | |
| | 22 | NUT - TERMINAL COVER | 1 | CWH7080300J | ← | |
| ⚠ | 24 | V-COIL COMPLETE - 4-WAY VALVE | 1 | ACXA43C00250 | ← | O |
| | 25 | O-RING | 1 | ACXB81-06510 | ← | |
| ⚠ | 26 | V-COIL COMPLETE - EXP.VALVE | 1 | ACXA43C07230 | ← | O |
| | 27 | SOUND PROOF BOARD | 1 | CWH151428 | ← | |
| ⚠ | 28 | REACTOR | 1 | G0C392J00037 | G0C392J00050 | O |
| | 29 | SOUND PROOF MATERIAL - COMP. TOP | 1 | CWG302314 | ← | |
| | 30 | SOUND PROOF MATERIAL - COMP. BODY | 1 | ACXG30-11540 | ← | |
| | 31 | SOUND PROOF MATERIAL | 1 | ACXG30-11800 | ← | |
| | 32 | SOUND PROOF MATERIAL | 1 | CWG302994 | ← | |
| ⚠ | 33 | SENSOR CO-COMP TEMP | 1 | ACXA50C17670 | ACXA50C17380 | O |
| | 34 | CONTROL BOARD COVER-TOP | 1 | ACXH13-00450 | ← | |
| ⚠ | 35 | ELECTRONIC CONTROLLER - MAIN | 1 | ACXA73C90470R | ACXA73C90480R | O |
| ⚠ | 36 | TERMINAL BOARD ASSY | 1 | CWA28K1298 | ← | O |
| | 37 | CABINET SIDE PLATE CO. | 1 | ACXE04C00460 | ← | |
| ⚠ | 38 | SENSOR CO-AIR TEMP AND PIPE TEMP | 1 | CWA50C3267 | ← | O |
| | 39 | CABINET SIDE PLATE | 1 | CWE041858A | ← | |
| | 40 | CABINET FRONT PLATE CO. | 1 | CWE06C1566 | ← | |
| | 41 | CABINET TOP PLATE | 1 | CWE031230A | ← | |
| | 42 | PLATE - C. B. COVER TERMINAL | 1 | CWH131301 | ← | |
| | 43 | CONTROL BOARD COVER CO. | 1 | CWH13C1359 | ← | |
| | 45 | STRAINER | 1 | CWB11094 | ← | |
| | 47 | EXPANSION VALVE | 1 | ACXB05-01260 | ← | |
| | 50 | WIRE NET | 1 | CWD041212A | ← | |
| | 52 | ACCESSORY-COMPLETE | 1 | ACXH82C21740 | ← | |
| | 53 | PANASONIC BADGE | 1 | CWE373439 | ← | |
| | 54 | TUBE ASSY COMPLETE - EXP.VALVE | 1 | ACXT00C43610 | ← | |
| | 55 | TUBE ASSY COMPLETE- 4 WAYS | 1 | ACXT00C35300 | ACXT00C35310 | |
| | 56 | CONTROL BOARD CASING | 1 | ACXH10-00750 | ← | |

| SAFETY | REF. NO. | PART NAME & DESCRIPTION | QTY. | CU-Z35ZKE | CU-Z42ZKE | REMARK |
|--------|----------|--------------------------|------|---------------|--------------|--------|
| | 57 | INSTALLATION INSTRUCTION | 1 | ACXF60-48620 | ← | |
| | 58 | INSTALLATION INSTRUCTION | 1 | ACXF60-48630 | ← | |
| | 59 | INSTALLATION INSTRUCTION | 1 | ACXF60-48640 | ← | |
| | 60 | INSTALLATION INSTRUCTION | 1 | ACXF60-48650 | ← | |
| | 61 | INSTALLATION INSTRUCTION | 1 | ACXF60-48660 | ← | |
| | 62 | INSTALLATION INSTRUCTION | 1 | ACXF60-48670 | ← | |
| | 63 | INSTALLATION INSTRUCTION | 1 | ACXF60-48680 | ← | |
| | 64 | INSTALLATION INSTRUCTION | 1 | ACXF60-48690 | ← | |
| | 65 | INSTALLATION INSTRUCTION | 1 | ACXF60-48700 | ← | |
| | 66 | INSTALLATION INSTRUCTION | 1 | ACXF60-48710 | ← | |
| | 67 | INSTALLATION INSTRUCTION | 1 | ACXF60-48720 | ← | |
| | 68 | INSTALLATION INSTRUCTION | 1 | ACXF60-49500 | ← | |
| | 69 | INSTALLATION INSTRUCTION | 1 | ACXF60-49510 | ← | |
| | 70 | INSTALLATION INSTRUCTION | 1 | ACXF60-49520 | ← | |
| | 71 | INSTALLATION INSTRUCTION | 1 | ACXF60-49530 | ← | |
| | 72 | INSTALLATION INSTRUCTION | 1 | ACXF60-49540 | ← | |
| | 73 | INSTALLATION INSTRUCTION | 1 | ACXF60-49550 | ← | |
| | 74 | BAG | 1 | CWG861078 | ← | |
| | 75 | BASE BOARD-COMPLETE | 1 | CWG62C1223 | ← | |
| | 76 | SHOCK ABSORBER - RIGHT | 1 | ACXG70-14420A | ← | |
| | 77 | SHOCK ABSORBER - LEFT | 1 | ACXG70-14430A | ← | |
| | 78 | C.C.CASE | 1 | ACXG50-48863 | ← | |
| | 79 | MODEL LABEL | 2 | ACXF87-01560 | ACXF87-01570 | |

(NOTE)

- All parts are supplied from PAPAMY, Malaysia (Vendor Code: 00029488).
- "O" marked parts are recommended to be kept in stock.