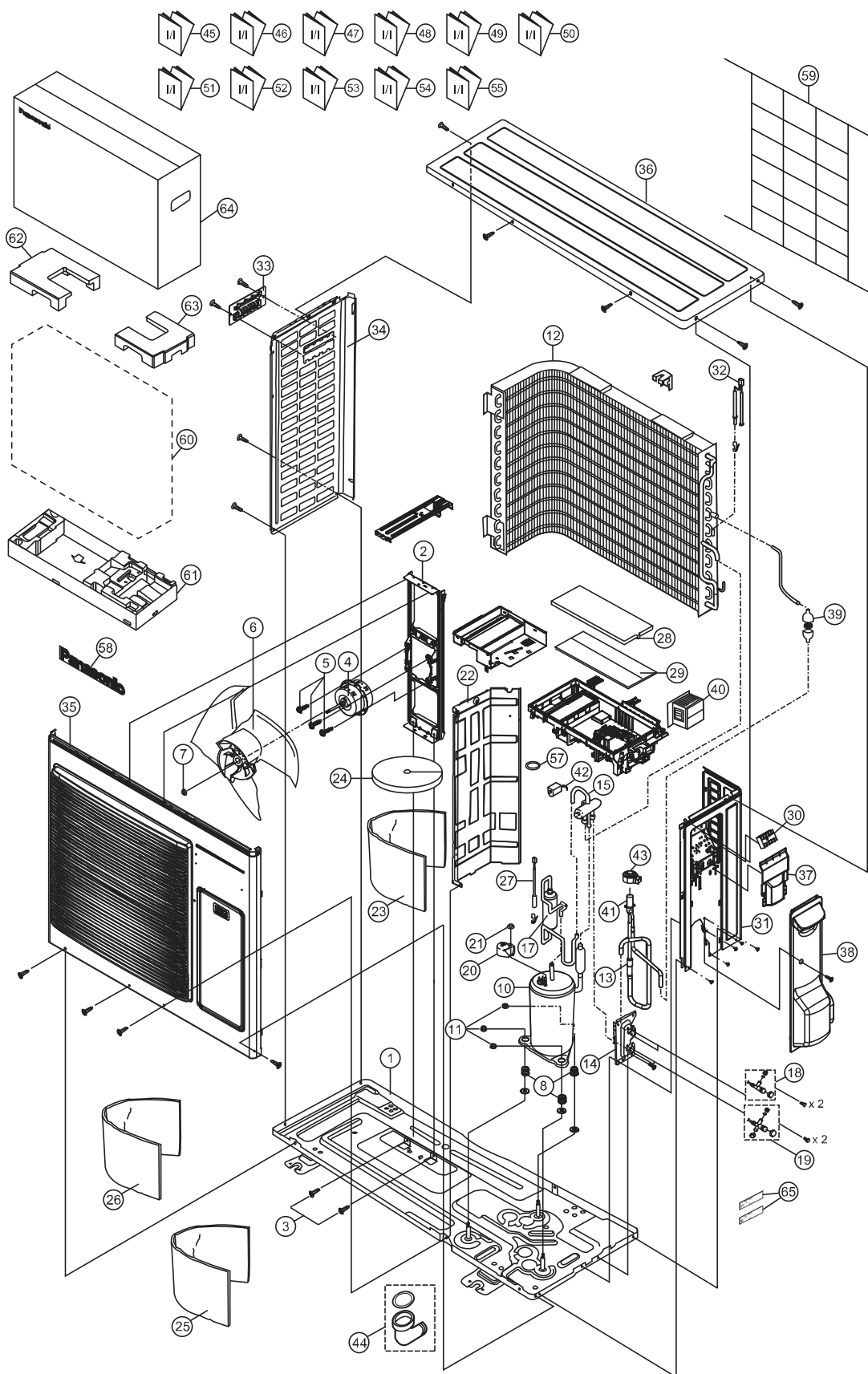


16.2 Outdoor Unit

16.2.1 CU-Z50XKE



Note

The above exploded view is for the purpose of parts disassembly and replacement. The non-numbered parts are not kept as standard service parts.

SAFETY	REF. NO.	PART NAME & DESCRIPTION	QTY.	CU-Z50XKE	REMARK
	1	CHASSIS COMPLETE	1	ACXD52K00320	
	2	FAN MOTOR BRACKET	1	ACXD54-00140	
	3	SCREW - FAN MOTOR BRACKET	2	ACXH55-07140	
⚠	4	FAN MOTOR	1	L6CAYYYL0076	O
	5	SCREW - FAN MOTOR MOUNT	4	CWH551106J	
	6	PROPELLER FAN ASSY	1	ACXH03K00070	
	7	NUT - PROPELLER FAN	1	CWH56053J	
	8	ANTI - VIBRATION BUSHING	3	CWH50077	
	9	PACKING	-	-	
⚠	10	COMPRESSOR	1	9RD132XGA21	O
	11	NUT - COMPRESSOR MOUNT	3	CWH561096	
	12	CONDENSER	1	ACXB32C23400	
	13	TUBE ASSY - STRAINER	1	ACXT00-72280	
	14	HOLDER COUPLING	1	ACXH35-00080	
	15	4-WAYS VALVE	1	ACXB00-00140	
	17	DISCHARGE MUFFLER	1	ACXB12-01060	
	18	2-WAYS VALVE (LIQUID)	1	ACXB02-03430	
	19	3-WAY VALVE (GAS)	1	ACXB01-00580	
	20	TERMINAL COVER	1	CWH171039A	
	21	NUT - TERMINAL COVER	1	CWH7080300J	
	22	SOUND PROOF BOARD	1	ACXH15-00200	
	23	SOUND PROOF MATERIAL - COMP. BODY	1	ACXG30-11560	
	24	SOUND PROOF MATERIAL - COMP. TOP	1	ACXG30-11550	
	25	SOUND PROOF MATERIAL	1	ACXG30-11880	
	26	SOUND PROOF MATERIAL	1	CWG302632	
	27	SENSOR CO-COMP TEMP	1	ACXA50C17400	O
	28	CONTROL BOARD COVER-TOP	1	ACXH13-00490	
⚠	29	ELECTRONIC CONTROLLER - MAIN	1	ACXA73C72850R	O
⚠	30	TERMINAL BOARD ASSY	1	CWA28K1298	O
	31	CABINET SIDE PLATE CO.	1	ACXE04C00720	
⚠	32	SENSOR CO-AIR TEMP AND PIPE TEMP	1	CWA50C3079	O
	33	HANDLE	1	CWE161010	
	34	CABINET SIDE PLATE	1	ACXE04-00580	
	35	CABINET FRONT PLATE CO.	1	ACXE06K00080	
	36	CABINET TOP PLATE	1	ACXE03-00200	
	37	PLATE - C. B. COVER TERMINAL	1	CWH131470	
	38	CONTROL BOARD COVER CO.	1	ACXH13C00170	
	39	STRAINER	1	CWB11094	
⚠	40	REACTOR	1	G0C392J00027	O
	41	EXPANSION VALVE	1	ACXB05-01080	
⚠	42	V-COIL COMPLETE	1	ACXA43C00250	O
⚠	43	V-COIL COMPLETE	1	ACXA43C06110	O
	44	BAG-COMPLETE	1	CWG87C900	
	45	INSTALLATION INSTRUCTION	1	ACXF60-42621	
	46	INSTALLATION INSTRUCTION	1	ACXF60-42631	
	47	INSTALLATION INSTRUCTION	1	ACXF60-42641	
	48	INSTALLATION INSTRUCTION	1	ACXF60-42651	

SAFETY	REF. NO.	PART NAME & DESCRIPTION	QTY.	CU-Z50XKE	REMARK
	49	INSTALLATION INSTRUCTION	1	ACXF60-42661	
	50	INSTALLATION INSTRUCTION	1	ACXF60-42671	
	51	INSTALLATION INSTRUCTION	1	ACXF60-42681	
	52	INSTALLATION INSTRUCTION	1	ACXF60-42691	
	53	INSTALLATION INSTRUCTION	1	ACXF60-42701	
	54	INSTALLATION INSTRUCTION	1	ACXF60-42711	
	55	INSTALLATION INSTRUCTION	1	ACXF60-42721	
	57	O-RING	1	ACXB81-06510	
	58	PANASONIC BADGE	1	CWE373439	
	59	WIRE NET	1	ACXD04-00130A	
	60	BAG	1	CWG861461	
	61	BASE BOARD-COMPLETE	1	CWG62C1131	
	62	SHOCK ABSORBER	1	CWG713217	
	63	SHOCK ABSORBER	1	CWG713218	
	64	C.C.CASE	1	ACXG50-48881	
	65	MODEL LABEL	2	ACXF85-62810	

(NOTE)

- All parts are supplied from PAPAMY, Malaysia (Vendor Code: 00029488).
- "O" marked parts are recommended to be kept in stock.