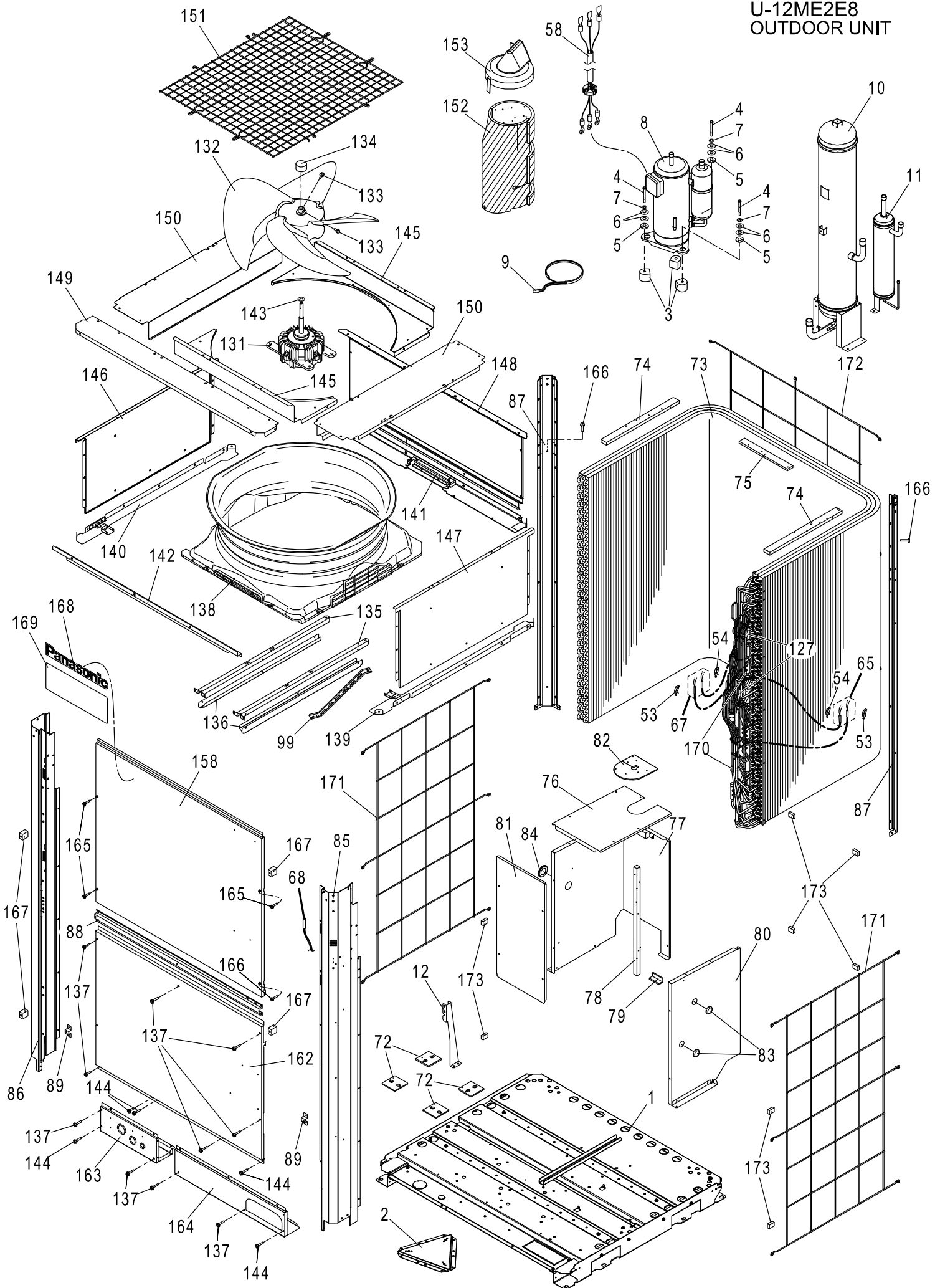
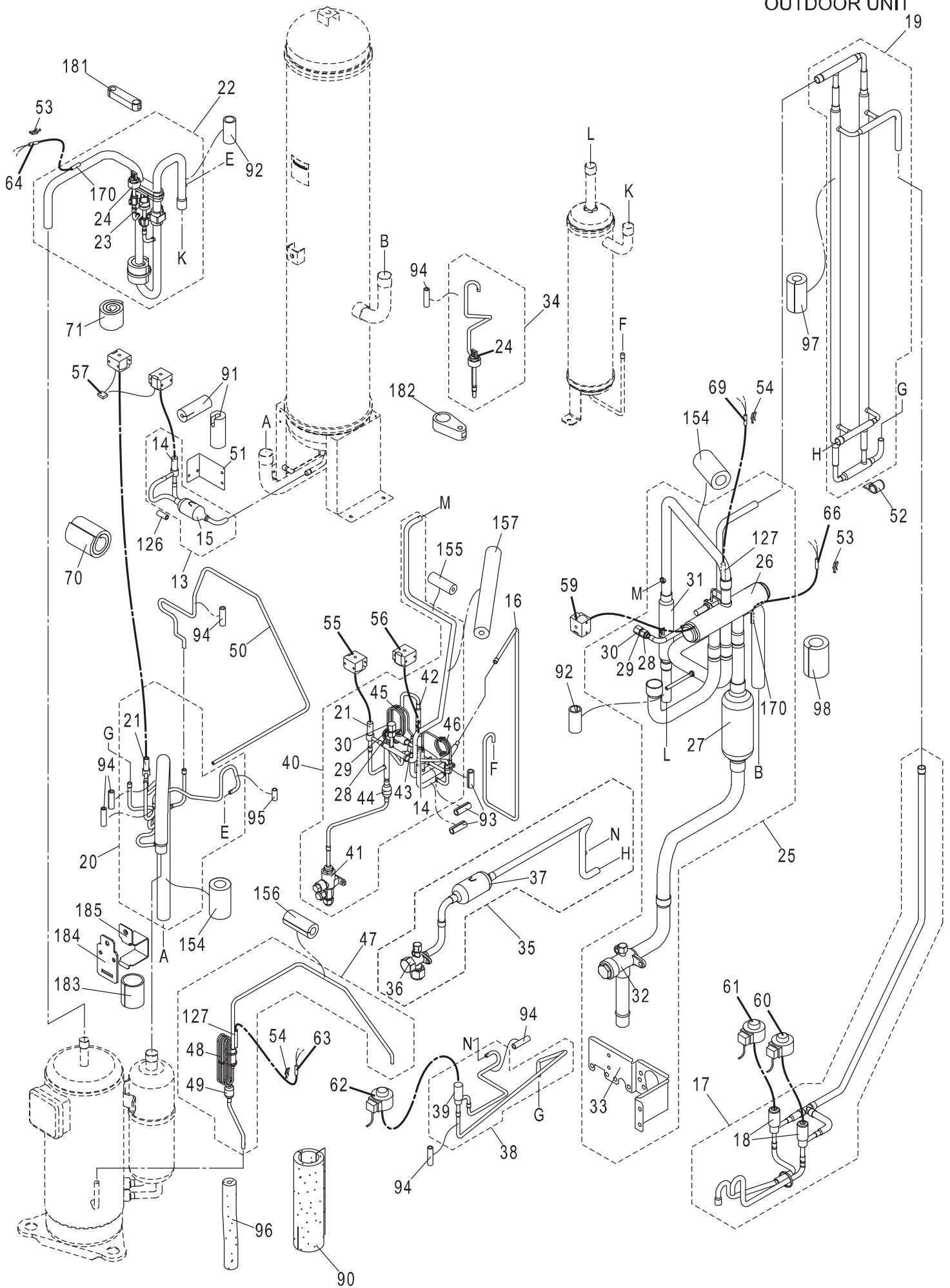


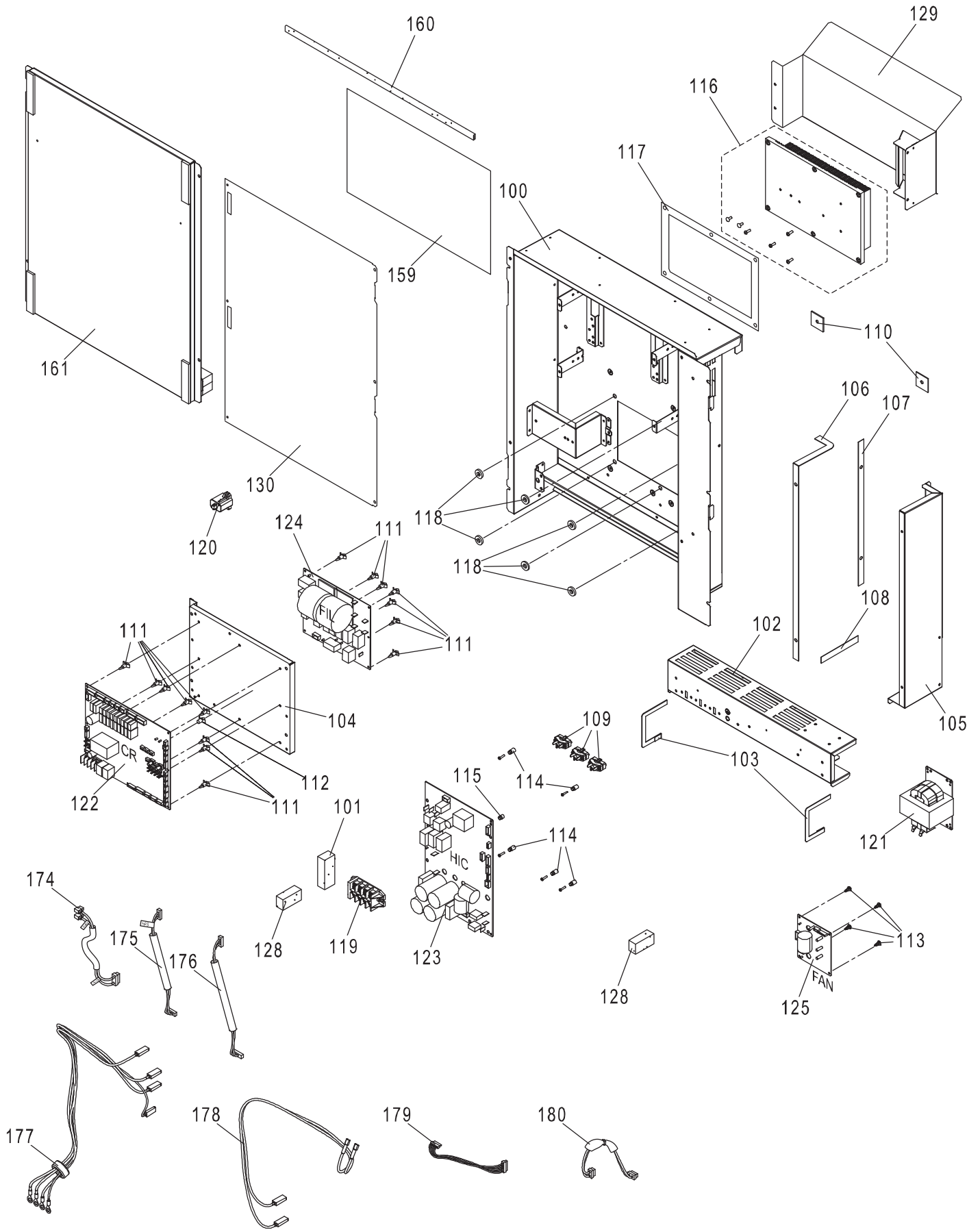
U-12ME2E8
OUTDOOR UNIT



U-12ME2E8
OUTDOOR UNIT



U-12ME2E8 OUTDOOR UNIT



NOTE : Tube assembly (Part No. 20, 22, 34, 47, 50) design change from May, 2018.
In case of tube assembly need to replaced for product stated below and serial no. is within the range,
it is required to change total 5 tube assembly parts (Part No. 200) at once.

Applicable Models and serial no. :

Region	Model	Serial No.
Europe	U-12ME2E8	63388 00001 – 63388 00785

ATTENTION!

To ensure correct parts supply ,please let us know the following,

Part No. when you make service parts order:

U-12ME2E8

1.Part No. 2.Description 3.Q'ty 4.Volts-Hz-Ph 5.Product Model No.

OUTDOOR UNIT

KeyNo.	Description	12Q'ty	Reference No.	Available in EyesG21
1	BASE PAN-COMPLETE	1	CWD52C1033	o
2	PARTICULAR PLATE COMPLETE	1	CWD91C0268A	
3	ANTI-VIBRATION BUSHING	3	CWH501110	o
4	SCREW	3	CWH551325	o
5	SPACER	3	CWH541154	o
6	PLAIN WASHER	6	CWXWE65H30V	
7	WASHER	3	CWH571081	
*	8 COMPRESSOR (CWB092817)	1	5JD650ZCA22	o
*	9 HEATER	1	CWA341105	o
10	ACCUMULATOR ASSY	1	CWB13K1092	o
11	OIL SEPARATER	1	CWB161017	o
12	PARTICULAR PLATE	1	CWD912658	
*	13 2-WAYS VALVE ASSY	1	CWB02K1003	
*	14 2-WAYS VALVE (ORVR, ACV)	2	CWB021604	o
15	STRAINER	1	CWB111092	o
16	MULTIBENT TUBE	1	CWT342718	
*	17 EXPANTION VALVE ASSY	1	ACXB05K00250	
*	18 EXPANTION VALVE (MOV1, MOV2)	2	CWB051072X	o
19	TUBE ASSY	1	CWT028395	
*	20 2-WAYS VALVE ASSY	1	ACXB02K00100	
*	21 2-WAYS VALVE (BPV, SAVE)	2	CWB021580	o
22	TUBE ASSY	1	ACXT00-52230	
*	23 PRESSURE SWITCH	1	CWA101033	o
*	24 PRESSURE SENSING DEVICE	2	CWA501463	o
*	25 4-WAYS VALVE ASSY	1	CWB00K1104	
*	26 4-WAYS VALVE (20S)	1	CWB001112	o
27	STRAINER	1	CWB111072	o
28	TUBE CONNECTER	2	CWT291170	
29	CHECK VALVE	2	CWB031094	o
30	CAP	2	CWH521254	
31	CHECK VALVE	1	CWB031111	o
32	3-WAYS VALVE	1	CWB011855	o
33	PARTICULAR PLATE	1	CWD912648	
34	TUBE ASSY	1	ACXT00-52570	
35	TUBE ASSY	1	CWT030439	
36	3-WAYS VALVE	1	CWB011852	o
37	STRAINER	1	CWB111067	o
*	38 EXPANTION VALVE ASSY	1	CWB05K1014	
*	39 EXPANTION VALVE (MOV4)	1	CWB051050	o
40	TUBE ASSY	1	CWT030441	
41	3-WAYS VALVE	1	CWB011692	o
42	CHECK VALVE	1	CWB031102	o
43	STRAINER	1	CWB111068	o
44	STRAINER	1	CWB111069	o
*	45 CAPILLARY TUBE	1	CWB153570	o
*	46 CAPILLARY TUBE	1	CWB153236	o
*	47 CAPILLARY TUBE ASSY	1	ACXB15K05220	
*	48 CAPILLARY TUBE	1	CWB153237	o
49	STRAINER	1	CWB111070	o
50	MULTIBENT TUBE	1	ACXT30-84050	

NOTE: Metal and plastic parts will be supplied basically with necessary heat insulation pads or packing. Each key number with an asterisk (*) means the recommended service parts.

ATTENTION!

To ensure correct parts supply ,please let us know the following,

Part No. when you make service parts order:

U-12ME2E8

1.Part No. 2.Description 3.Q'ty 4.Volts-Hz-Ph 5.Product Model No.

OUTDOOR UNIT

KeyNo.	Description	12Q'ty	Reference No.	Available in EyesG21
51	L-PIECE	1	CWD701186	
52	C-PIECE-COMPLETE	1	CWD79C1002	
53	PLATE SPRING	4	CWH711013	
54	PLATE SPRING	4	CWH711025	
*	55 V-COIL COMPLETE (BPV)	1	CWA43C2670	o
*	56 V-COIL COMPLETE (ORVR)	1	CWA43C2673	o
*	57 V-COIL COMPLETE (ACV,SAVE)	1	CWA43C2675	o
*	58 LEAD WIRE-COMPLETE	1	CWA68C2193	
*	59 V-COIL COMPLETE (20S)	1	ACXA43C00080	o
*	60 V-COIL COMPLETE (MOV1)	1	CWA43C2679X	o
*	61 V-COIL COMPLETE (MOV2)	1	CWA43C2681X	o
*	62 V-COIL COMPLETE (MOV4)	1	CWA43C2682	o
*	63 THERMISTOR (OIL)	1	CWA50C3339	o
*	64 THERMISTOR (DISCH)	1	CWA50C3343	o
*	65 THERMISTOR (EXL1,2)	1	CWA50C3347	o
*	66 THERMISTOR (SCT)	1	CWA50C3356	o
*	67 THERMISTOR (EXG1,2)	1	CWA50C3350	o
*	68 THERMISTOR (TO)	1	CWA50C3337	o
*	69 THERMISTOR (SCG)	1	CWA50C3353	o
70	BUTYL TAPE	1	KG8AF70-160	
71	BUTYL TAPE	1	KG4AF40-130	
72	SPACER	4	CWH541156	
73	FIN & TUBE CONDENSER COMPLETE	1	CWB32C4205	o
74	EPT SEAL	2	CWD15A35-450	
75	EPT SEAL	1	CWD10A35-300	
76	SOUND-PROOF BOARD	1	CWH151413	
77	SOUND-PROOF BOARD ASSY	1	CWH15K1080	
78	EPT SEAL	1	CWD20A20-580	
79	EPT SEAL	1	CWD3A40-60	
80	SOUND-PROOF BOARD ASSY	1	CWH15K1081	
81	SOUND-PROOF BOARD	1	CWH151414	
82	RUBBER	1	CWG251091	
83	RUBBER	2	CWG251068	
84	RUBBER	1	CWG251069	
85	CABINET SIDE PLATE ASSY	1	CWE04K1199A	o
86	CABINET SIDE PLATE	1	CWE041843A	o
87	CABINET SIDE PLATE	2	CWE041844A	o
88	PARTICULAR PLATE	1	CWD912657	
89	PARTICULAR PIECE	2	CWD934068	
90	ADH. POLY-E. FOAM	1	CWG123162	
91	ADH. POLY-E. FOAM	2	CWG123541	
92	RUBBER	2	CWG251065	
93	RUBBER	3	CWG251062	
94	RUBBER	6	CWG251059	
95	RUBBER	1	CWG251058	
96	ADH. POLY-E. FOAM	1	CWG123542	
97	ADH. POLY-E. FOAM	1	CWG123545	
98	ADH. POLY-E. FOAM	1	CWG123547	
99	PARTICULAR PLATE	1	CWD912644	
100	CONTROL BOARD ASSY	1	CWH10K1258	

NOTE: Metal and plastic parts will be supplied basically with necessary heat insulation pads or packing. Each key number with an asterisk (*) means the recommended service parts.

ATTENTION!

To ensure correct parts supply ,please let us know the following,

Part No. when you make service parts order:

U-12ME2E8

1.Part No. 2.Description 3.Q'ty 4.Volts-Hz-Ph 5.Product Model No.

OUTDOOR UNIT

KeyNo.	Description	12Q'ty	Reference No.	Available in EyesG21	
101	EPT SEAL (FLAMEPROOF)	1	CWDN20A30-75		
102	DUCT ASS.Y	1	CWD22K1002		
103	ADH. POLY-E. FOAM	2	CWG123548		
104	PARTICULAR PLATE	1	CWD912663		
105	DUCT	1	CWD221091		
106	ADH. POLY-E. FOAM	1	CWG123549		
107	ADH. POLY-E. FOAM	1	CWG123550		
108	POLY-E.FOAM	1	CWE2A15-110		
109	HOLDER-P.S. CORD	3	CWH311080		
110	ADH. POLY-E. FOAM	2	CWG123558		
111	SPACER	15	CWH541203		
112	SPACER	1	CWH541204		
113	SPACER	4	CWH541205		
114	SPACER	5	CWH541206		
115	SPACER	1	CWH541207		
116	HEATSINK	1	ACXA58K00010		
117	INSULATION	1	CWA621014		
118	SPACER	6	CWH541153		
*	119	TERMINAL BOARD ASSY	1	CWA28K1109	o
*	120	PTC THERMISTORS	1	D4DDG1010001	o
*	121	FIXED INDUCTORS	1	G0C252K00001	o
*	122	PC BOARD W/COMPONENT	1	CWA73C9052	o
*	123	ELEC.CONTROLLER-COMPLETE(HIC)	1	CWA73C9053	o
*	124	ELECTRONIC CONTROLLER (FIL)	1	ACXA73-30540	o
*	125	ELECTRONIC CONTROLLER (FAN)	1	ACXA73-36140	o
	126	RUBBER	1	CWG251060	
	127	STRAIGHT TUBE	4	CWT103083	
	128	EPT SEAL (FLAMEPROOF)	2	CWDN20A25-55	
	129	DUCT ASS.Y	1	CWD22K1004	
	130	PARTICULAR PLATE	1	CWD912666	
*	131	MOTOR (LARGE DC)	1	CWDMSBG75SY	o
*	132	FAN ASSY	1	CWH03K1082	o
	133	BOLT	2	CWXVG6A10FJ4	o
	134	CAP	1	CWH521248	
	135	FAN MOTOR BRACKET	2	CWD541258	
	136	AIR REGULATING PLATE	2	CWD211007	
	137	SCREW	10	CWH551448	
	138	AIR GUIDER P.F.	1	CWD311030	o
	139	FAN MOTOR BRACKET ASSY	1	CWD54K1087	
	140	FAN MOTOR BRACKET ASSY	1	CWD54K1088	
	141	FAN MOTOR BRACKET ASSY	1	CWD54K1090	
	142	FAN MOTOR BRACKET	1	CWD541261	
	143	SPACER	1	CWH541158	
	144	SCREW	5	CWH551326A	
	145	CABINET TOP PLATE-COMPLETE	2	CWE03C1171	
	146	CABINET SIDE PLATE	1	CWE041845A	o
	147	CABINET SIDE PLATE	1	CWE041846A	o
	148	CABINET REAR PLATE	1	CWE021132A	o
	149	CABINET TOP PLATE	1	CWE031226A	
	150	CABINET TOP PLATE	2	CWE031227A	

NOTE: Metal and plastic parts will be supplied basically with necessary heat insulation pads or packing. Each key number with an asterisk (*) means the recommended service parts.

ATTENTION!

To ensure correct parts supply ,please let us know the following,

Part No. when you make service parts order:

U-12ME2E8

1.Part No. 2.Description 3.Q'ty 4.Volts-Hz-Ph 5.Product Model No.

OUTDOOR UNIT

KeyNo.	Description	12Q'ty	Reference No.	Available in EyesG21
151	WIRE NET ASSY	1	CWD04K1004A	
152	SOUND PROOF MATERIAL	1	CWG302976	o
153	RAIN COVER-COMLETE	1	CWH81C1005	
154	ADH. POLY-E. FOAM	3	CWG123167	
155	ADH. POLY-E. FOAM	1	CWG123551	
156	ADH. POLY-E. FOAM	1	CWG123173	
157	ADH. POLY-E. FOAM	1	CWG123553	
158	CABINET FRONT PLATE-COMLETE	1	CWE06C1549	o
* 159	WIRING DIAGRAM (CU)	1	ACXF22-01160	
160	POLY-E.FOAM	1	CWE2A25-550	
161	CONTROL BOARD COVER-COMLETE	1	CWH13C1346	
162	CABINET FRONT PLATE	1	CWE061391A	o
163	CABINET FRONT PLATE-COMLETE	1	CWE06C1550	o
164	CABINET FRONT PLATE-COMLETE	1	CWE06C1552	o
165	SCREW	3	CWH551333A	
166	SCREW	3	CWH551332A	
167	SPACER	4	CWH541152	
168	BADGE	1	CWE373439	
169	BADGE	1	ACXE37-02510	
170	STRAIGHT TUBE	4	CWT102194	
171	WIRE NET.RESIN NET	2	ACXD04-00050A	
172	WIRE NET.RESIN NET	1	ACXD04-00070A	
173	EPT SEAL (FLAMEPROOF)	8	CWDN20A20-30	
* 174	LEAD WIRE-COMLETE (63PH)	1	CWA68C2173	
* 175	LEAD WIRE-COMLETE (HPS)	1	CWA68C2175	
* 176	LEAD WIRE-COMLETE (LPS)	1	CWA68C2177	
* 177	LEAD WIRE-COMLETE (TB-FIL)	1	CWA68C2184	
* 178	LEAD WIRE-COMLETE (RE)	1	CWA68C2186	
* 179	LEAD WIRE-COMLETE (L-POW (R)	1	CWA68C2188	
* 180	LEAD WIRE-COMLETE (CR-AC-IN)	1	CWA68C2192	
181	RUBBER	1	ACXG25-02020	
182	RUBBER	1	ACXG25-02100	
183	RUBBER	1	ACXG25-02040	
184	PARTICULAR PIECE	1	ACXD93-18190	
185	PARTICULAR PIECE	1	ACXD93-18200	
200	TUBE ASSY COMPLETE	1	ACXB02C00030	
-	INSTALLATION INSTRUCTION	1	ACXF60-03480	
-	OPERATING INSTRUCTION	1	ACXF55-03680	

NOTE: Metal and plastic parts will be supplied basically with necessary heat insulation pads or packing. Each key number with an asterisk (*) means the recommended service parts.