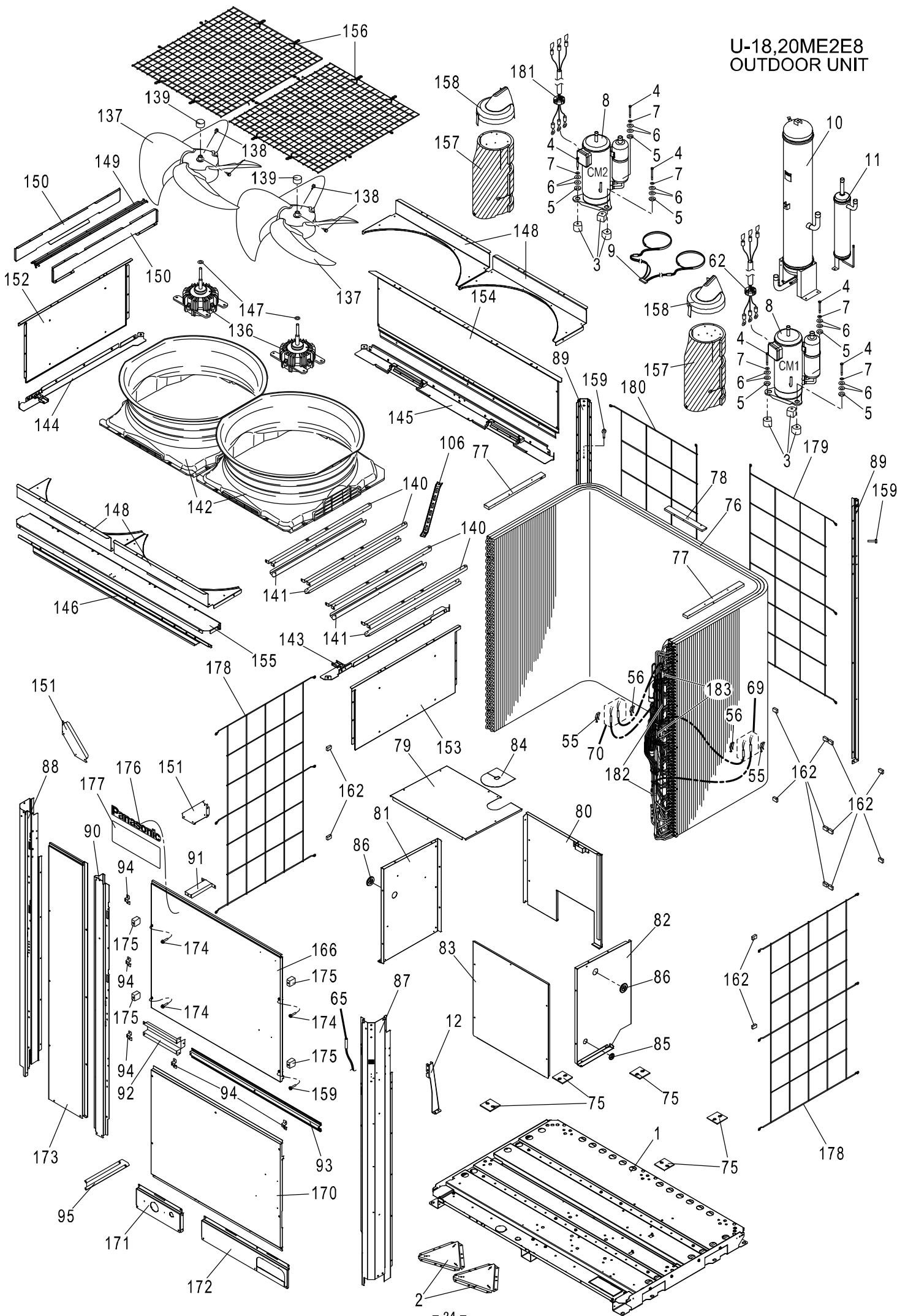
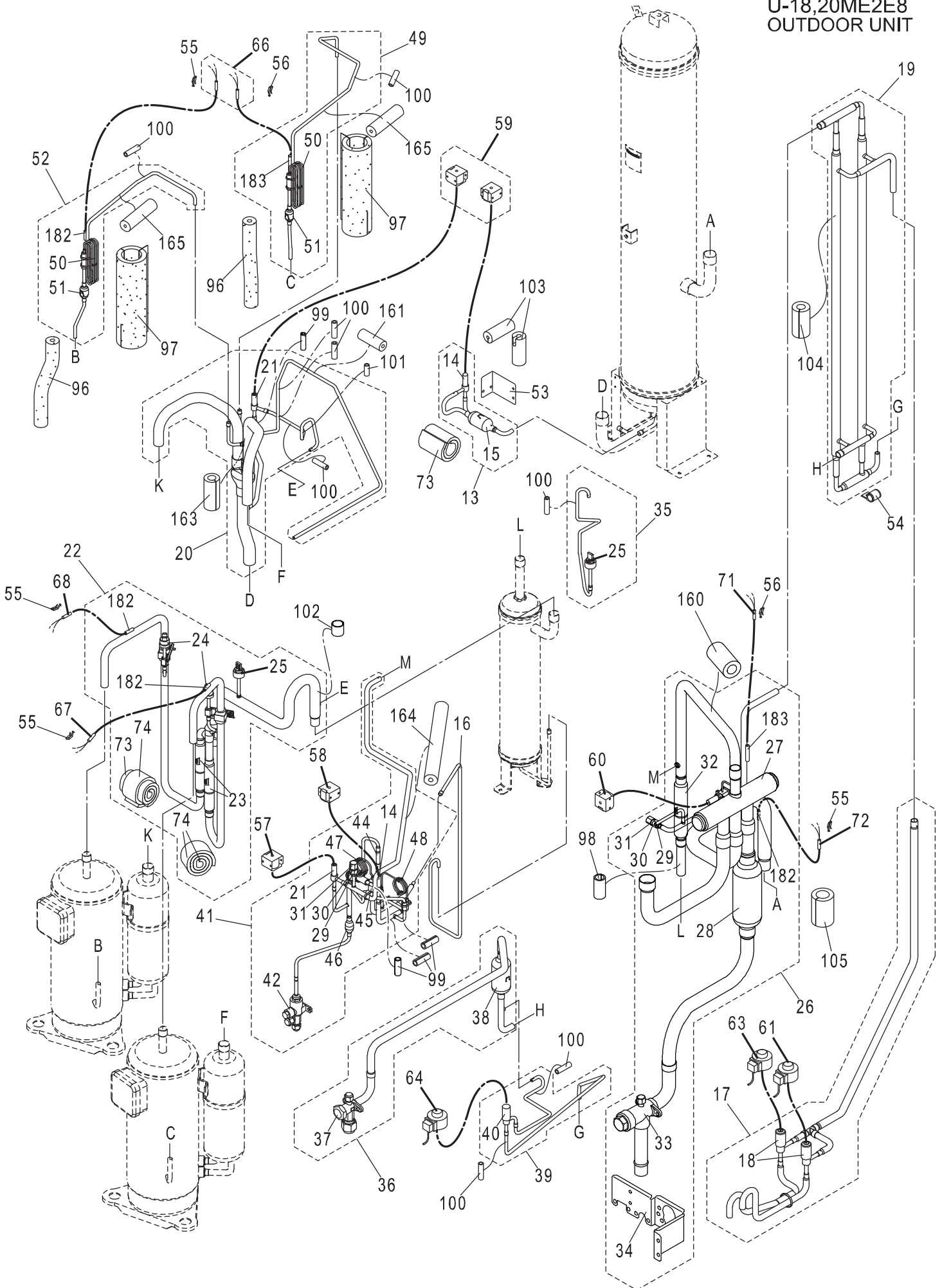


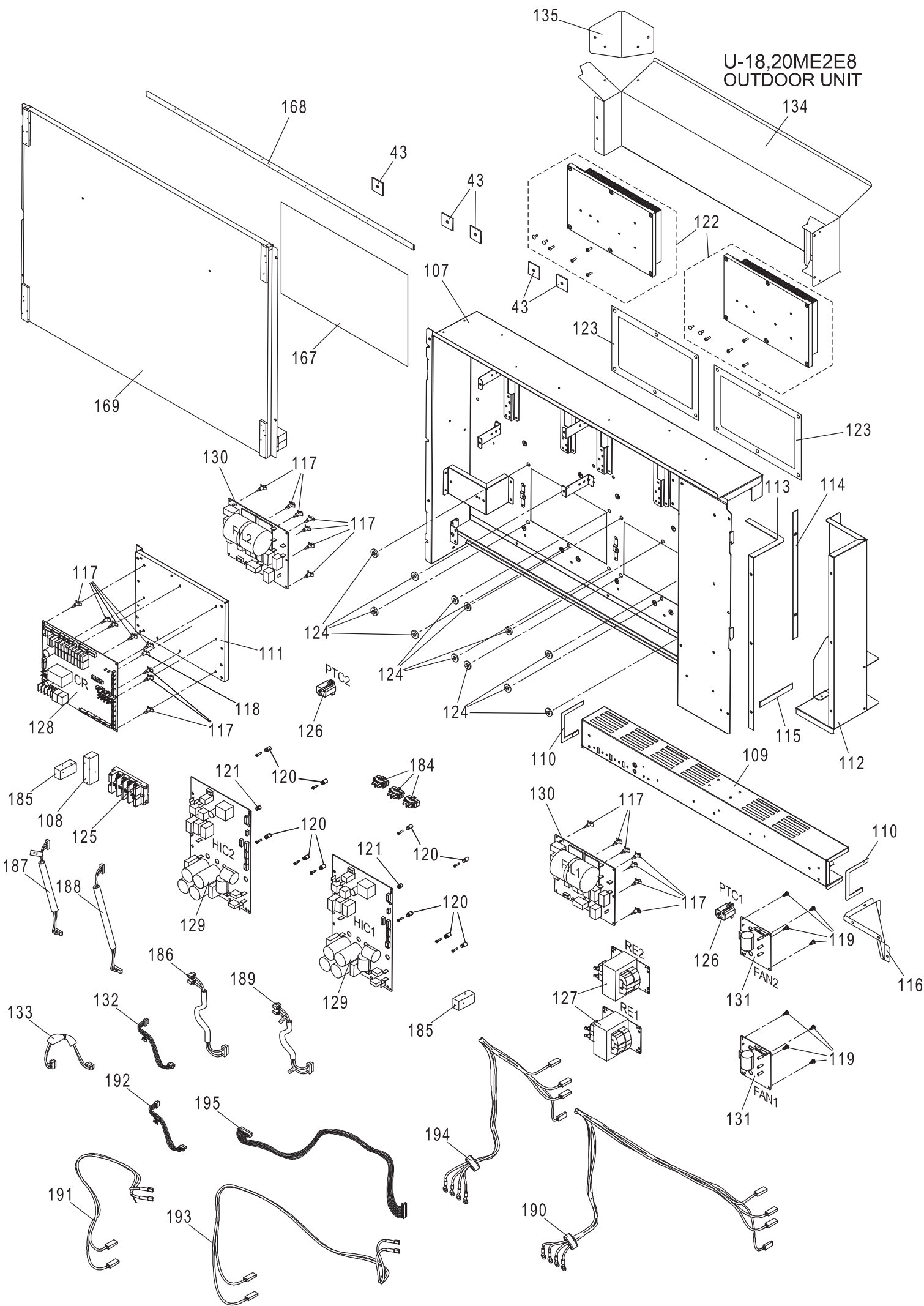
U-18,20ME2E8
OUTDOOR UNIT



U-18,20ME2E8
OUTDOOR UNIT



U-18,20ME2E8
OUTDOOR UNIT



ATTENTION!

To ensure correct parts supply ,please let us know the following,

Part No. when you make service parts order:

U-18,20ME2E8

1.Part No. 2.Description 3.Q'ty 4.Volts-Hz-Ph 5.Product Model No.

OUTDOOR UNIT

KeyNo.	Description	18Q'ty	20Q'ty	Reference No.	Available in EyesG21
1	BASE PAN-COMPLETE	1	1	CWD52C1035	o
2	PARTICULAR PLATE COMPLETE	2	2	CWD91C0268A	
3	ANTI-VIBRATION BUSHING	6	6	CWH501110	o
4	SCREW	6	6	CWH551325	o
5	SPACER	6	6	CWH541154	o
6	PLAIN WASHER	12	12	CWXWE65H30V	
7	WASHER	6	6	CWH571081	
*	8 COMPRESSOR (CWB092817)	2	2	5JD650ZCA22	o
*	9 HEATER	1	1	CWA341106	o
10	ACCUMULATOR ASSY	1	1	CWB13K1092	o
11	OIL SEPARATER	1	1	CWB161017	o
12	PARTICULAR PLATE	1	1	CWD912658	
13	2-WAYS VALVE ASSY	1	1	CWB02K1003	
14	2-WAYS VALVE (ORVR, ACV)	2	2	CWB021604	o
15	STRAINER	1	1	CWB111092	o
16	MULTIBENT TUBE	1	1	CWT342718	
*	17 EXPANTION VALVE ASSY	1	1	CWB05K1015	
*	18 EXPANTION VALVE (MOV1, MOV2)	2	2	CWB051072	o
19	TUBE ASSY	1	1	CWT028395	
20	2-WAYS VALVE ASSY	1	1	CWB02K1004	
21	2-WAYS VALVE (BPV, SAVE)	2	2	CWB021580	o
22	TUBE ASSY	1	1	ACXT00-03320	
*	23 CHECK VALVE	2	2	CWB031110	o
*	24 PRESSURE SWITCH	2	2	CWA101033	o
*	25 PRESSURE SENSING DEVICE	2	2	CWA501463	o
*	26 4-WAYS VALVE ASSY	1	1	CWB00K1105	
*	27 4-WAYS VALVE (20S)	1	1	CWB001117	o
28	STRAINER	1	1	CWB111071	o
29	TUBE CONNECTER	2	2	CWT291170	
*	30 CHECK VALVE	2	2	CWB031094	o
31	CAP	2	2	CWH521254	
*	32 CHECK VALVE	1	1	CWB031111	o
*	33 3-WAYS VALVE	1	1	CWB011862	o
34	PARTICULAR PLATE	1	1	CWD912648	
*	35 TUBE ASSY	1	1	CWT030434	
36	TUBE ASSY	1	1	CWT030655	
*	37 3-WAYS VALVE	1	1	CWB011691	o
38	STRAINER	1	1	CWB111067	o
*	39 EXPANTION VALVE ASSY	1	1	CWB05K1014	
*	40 EXPANTION VALVE (MOV4)	1	1	CWB051050	o
41	TUBE ASSY	1	1	CWT030656	
*	42 3-WAYS VALVE	1	1	CWB011692	o
43	ADH. POLY-E. FOAM	5	5	CWG123558	
44	CHECK VALVE	1	1	CWB031102	o
45	STRAINER	1	1	CWB111068	o
46	STRAINER	1	1	CWB111069	o
47	CAPILLARY TUBE	1	1	CWB153614	o
48	CAPILLARY TUBE	1	1	CWB153236	o
49	CAPILLARY TUBE ASSY	1	1	CWB15K1579	
50	CAPILLARY TUBE	2	2	CWB153237	o

NOTE: Metal and plastic parts will be supplied basically with necessary heat insulation pads or packing. Each key number with an asterisk (*) means the recommended service parts.

ATTENTION!

To ensure correct parts supply ,please let us know the following,

Part No. when you make service parts order:

U-18,20ME2E8

1.Part No. 2.Description 3.Q'ty 4.Volts-Hz-Ph 5.Product Model No.

OUTDOOR UNIT

KeyNo.	Description	18Q'ty	20Q'ty	Reference No.	Available in EyesG21
51	STRAINER	2	2	CWB111070	o
52	CAPILLARY TUBE ASSY	1	1	CWB15K1580	
53	L-PIECE	1	1	CWD701186	
54	C-PIECE-COMPLETE	1	1	CWD79C1002	
55	PLATE SPRING	6	6	CWH711013	
56	PLATE SPRING	4	4	CWH711025	
*	57 V-COIL COMPLETE (BPV)	1	1	CWA43C2669	o
*	58 V-COIL COMPLETE (ORVR)	1	1	CWA43C2672	o
*	59 V-COIL COMPLETE (ACV,SAVE)	1	1	CWA43C2676	o
*	60 V-COIL COMPLETE (20S)	1	1	CWA43C2686	o
*	61 V-COIL COMPLETE (MOV1)	1	1	CWA43C2679	o
*	62 LEAD WIRE-COMPLETE (CM1)	1	1	CWA68C2198	
*	63 V-COIL COMPLETE (MOV2)	1	1	CWA43C2681	o
*	64 V-COIL COMPLETE (MOV4)	1	1	CWA43C2682	o
*	65 THERMISTOR (TO)	1	1	CWA50C3336	o
*	66 THERMISTOR (OIL1,2)	1	1	CWA50C3340	o
*	67 THERMISTOR (DISCH1)	1	1	CWA50C3342	o
*	68 THERMISTOR (DISCH2)	1	1	CWA50C3344	o
*	69 THERMISTOR (EXL1,2)	1	1	CWA50C3346	o
*	70 THERMISTOR (EXG1,2)	1	1	CWA50C3349	o
*	71 THERMISTOR (SCG)	1	1	CWA50C3352	o
*	72 THERMISTOR (SCT)	1	1	CWA50C3355	o
73	BUTYL TAPE	2	2	KG8AF70-160	
74	BUTYL TAPE	3	3	KG8AF40-130	
75	SPACER	5	5	CWH541156	
76	FIN & TUBE CONDENSER COMPLETE	1	1	CWB32C4285	
77	EPT SEAL	2	2	CWD15A35-450	
78	EPT SEAL	1	1	CWD10A35-300	
79	SOUND-PROOF BOARD	1	1	CWH151415	
80	SOUND-PROOF BOARD-COMPLETE	1	1	CWH15C1092	
81	SOUND-PROOF BOARD ASSY	1	1	CWH15K1083	
82	SOUND-PROOF BOARD ASSY	1	1	CWH15K1084	
83	SOUND-PROOF BOARD	1	1	CWH151416	
84	RUBBER	1	1	CWG251091	
85	RUBBER	1	1	CWG251068	
86	RUBBER	2	2	CWG251069	
87	CABINET SIDE PLATE ASSY	1	1	CWE04K1199A	o
88	CABINET SIDE PLATE	1	1	CWE041843A	o
89	CABINET SIDE PLATE	2	2	CWE041844A	o
90	CABINET SIDE PLATE	1	1	CWE041870A	
91	PARTICULAR PLATE	1	1	CWD912704	
92	PARTICULAR PLATE	1	1	CWD912705	
93	PARTICULAR PLATE	1	1	CWD912657	
94	PARTICULAR PIECE	5	5	CWD934068	
95	PARTICULAR PLATE	1	1	CWD912710	
96	ADH. POLY-E. FOAM	2	2	CWG123542	
97	ADH. POLY-E. FOAM	2	2	CWG123162	
98	RUBBER	1	1	CWG251065	
99	RUBBER	4	4	CWG251062	
100	RUBBER	8	8	CWG251059	

NOTE: Metal and plastic parts will be supplied basically with necessary heat insulation pads or packing. Each key number with an asterisk (*) means the recommended service parts.

ATTENTION!

To ensure correct parts supply ,please let us know the following,

Part No. when you make service parts order:

U-18,20ME2E8

1.Part No. 2.Description 3.Q'ty 4.Volts-Hz-Ph 5.Product Model No.

OUTDOOR UNIT

KeyNo.	Description	18Q'ty	20Q'ty	Reference No.	Available in EyesG21	
101	RUBBER	1	1	CWG251058		
102	RUBBER	1	1	CWG251066		
103	ADH. POLY-E. FOAM	2	2	CWG123541		
104	ADH. POLY-E. FOAM	1	1	CWG123545		
105	ADH. POLY-E. FOAM	1	1	CWG123573		
106	PARTICULAR PLATE	1	1	CWD912644		
107	CONTROL BOARD ASSY	1	1	CWH10K1265		
108	EPT SEAL (FLAMEPROOF)	1	1	CWDN20A30-75		
109	DUCT ASS.Y	1	1	CWD22K1008		
110	ADH. POLY-E. FOAM	2	2	CWG123548		
111	PARTICULAR PLATE	1	1	CWD912663		
112	DUCT ASS.Y	1	1	CWD22K1006		
113	ADH. POLY-E. FOAM	1	1	CWG123574		
114	ADH. POLY-E. FOAM	1	1	CWG123550		
115	POLY-E.FOAM	1	1	CWE2A15-110		
116	PARTICULAR PLATE	1	1	CWD912708		
117	SPACER	22	22	CWH541203		
118	SPACER	1	1	CWH541204		
119	SPACER	8	8	CWH541205		
120	SPACER	10	10	CWH541206		
121	SPACER	2	2	CWH541207		
122	HEATSINK	2	2	ACXA58K00010		
123	INSULATION	2	2	CWA621014		
124	SPACER	12	12	CWH541153		
*	125	TERMINAL BOARD ASSY	1	1	CWA28K1271	o
*	126	PTC THERMISTORS	2	2	D4DDG1010001	o
*	127	FIXED INDUCTORS	2	2	G0C252K00001	o
*	128	PC BOARD W/COMPONENT	1	1	CWA73C9052	o
*	129	ELEC.CONTROLLER-COMPLETE(HIC)	2	2	CWA73C9053	o
*	130	ELECTRONIC CONTROLLER (FIL)	2	2	CWA748323	o
*	131	ELECTRONIC CONTROLLER (FAN)	2	2	ACXA73-36140	o
*	132	LEAD WIRE-COMPLETE (L POW (L)	1	1	CWA68C2207	
*	133	LEAD WIRE-COMPLETE (CR-AC-IN)	1	1	CWA68C2192	
*	134	DUCT ASS.Y	1	1	CWD22K1007	
	135	PARTICULAR PLATE	1	1	CWD912665	
*	136	MOTOR (LARGE DC)	2	2	CWDMSBG75SY	o
*	137	FAN ASSY	2	2	CWH03K1082	o
	138	BOLT	4	4	CWXVG6A10FJ4	o
	139	CAP	2	2	CWH521248	
	140	FAN MOTOR BRACKET	4	4	CWD541258	
	141	AIR REGULATING PLATE	4	4	CWD211007	
*	142	AIR GUIDER P.F.	2	2	CWD311030	o
	143	FAN MOTOR BRACKET ASSY	1	1	CWD54K1087	
	144	FAN MOTOR BRACKET ASSY	1	1	CWD54K1088	
	145	FAN MOTOR BRACKET ASSY	1	1	CWD54K1094	
	146	FAN MOTOR BRACKET	1	1	CWD541264	
	147	SPACER	2	2	CWH541158	o
	148	CABINET TOP PLATE-COMPLETE	4	4	CWE03C1171	
	149	PARTICULAR PLATE	1	1	CWD912709A	
	150	AIR REGULATING PLATE	2	2	CWD211008A	

NOTE: Metal and plastic parts will be supplied basically with necessary heat insulation pads or packing. Each key number with an asterisk (*) means the recommended service parts.

ATTENTION!

To ensure correct parts supply ,please let us know the following,

Part No. when you make service parts order:

U-18,20ME2E8

1.Part No. 2.Description 3.Q'ty 4.Volts-Hz-Ph 5.Product Model No.

OUTDOOR UNIT

KeyNo.	Description	18Q'ty	20Q'ty	Reference No.	Available in EyesG21
151	PARTICULAR PLATE	2	2	CWD912711	
152	CABINET SIDE PLATE	1	1	CWE041845A	o
153	CABINET SIDE PLATE	1	1	CWE041846A	o
154	CABINET REAR PLATE	1	1	CWE021135A	
155	CABINET TOP PLATE	1	1	CWE031231A	
156	WIRE NET ASSY	2	2	CWD04K1004A	
157	SOUND PROOF MATERIAL	2	2	CWG302976	o
158	RAIN COVER-COMplete	2	2	CWH81C1005	
159	SCREW	3	3	CWH551332A	
160	ADH. POLY-E. FOAM	1	1	CWG123167	
161	ADH. POLY-E. FOAM	1	1	CWG123551	
162	EPT SEAL (FLAMEPROOF)	14	14	CWDN20A20-30	
163	ADH. POLY-E. FOAM	1	1	CWG123173	
164	ADH. POLY-E. FOAM	1	1	CWG123553	
165	ADH. POLY-E. FOAM	2	2	CWG123163	
166	CABINET FRONT PLATE-COMplete	1	1	CWE06C1549	o
* 167	WIRING DIAGRAM (CU)	1	1	ACXF22-01180	
168	POLY-E.FOAM	1	1	CWE2A25-880	
169	CONTROL BOARD COVER-COMplete	1	1	CWH13C1347	
170	CABINET FRONT PLATE	1	1	CWE061391A	o
171	CABINET FRONT PLATE-COMplete	1	1	CWE06C1550	o
172	CABINET FRONT PLATE-COMplete	1	1	CWE06C1552	o
173	CABINET FRONT PLATE-COMplete	1	1	CWE06C1564	o
174	SCREW	3	3	CWH551333A	
175	SPACER	4	4	CWH541152	
176	BADGE	1	1	CWE373439	
177	BADGE	1	1	ACXE37-02510	
178	WIRE NET.RESIN NET	2	2	ACXD04-00050A	
179	WIRE NET.RESIN NET	1	1	ACXD04-00080A	
180	WIRE NET.RESIN NET	1	1	ACXD04-00090A	
* 181	LEAD WIRE-COMplete (CM2)	1	1	CWA68C2199	
182	STRAIGHT TUBE	6	6	CWT102194	
183	STRAIGHT TUBE	4	4	CWT103083	
184	HOLDER-P.S. CORD	3	3	CWH311080	
185	EPT SEAL (FLAMEPROOF)	2	2	CWDN20A25-55	
* 186	LEAD WIRE-COMplete (63PH (L)	1	1	CWA68C2173	
* 187	LEAD WIRE-COMplete (HPS)	1	1	CWA68C2175	
* 188	LEAD WIRE-COMplete (LPS)	1	1	CWA68C2177	
* 189	LEAD WIRE-COMplete (63PH (R)	1	1	CWA68C2178	
* 190	LEAD WIRE-COMplete (TB-FIL (R)	1	1	CWA68C2185	
* 191	LEAD WIRE-COMplete (RE (R)	1	1	CWA68C2187	
* 192	LEAD WIRE-COMplete (L POW (R)	1	1	CWA68C2208	
* 193	LEAD WIRE-COMplete (RE (L)	1	1	CWA68C2189	
* 194	LEAD WIRE-COMplete (TB-FIL (L)	1	1	CWA68C2190	
* 195	LEAD WIRE-COMplete (HIC2)	1	1	CWA68C2191	
-	INSTALLATION INSTRUCTION	1	1	ACXF60-03580	
-	OPERATING INSTRUCTION	1	1	ACXF55-03680	

NOTE: Metal and plastic parts will be supplied basically with necessary heat insulation pads or packing. Each key number with an asterisk (*) means the recommended service parts.