

Panasonic

Parts List

File No.

Air Conditioner

U-8LE1E8

U-10LE1E8

Destination

Europe

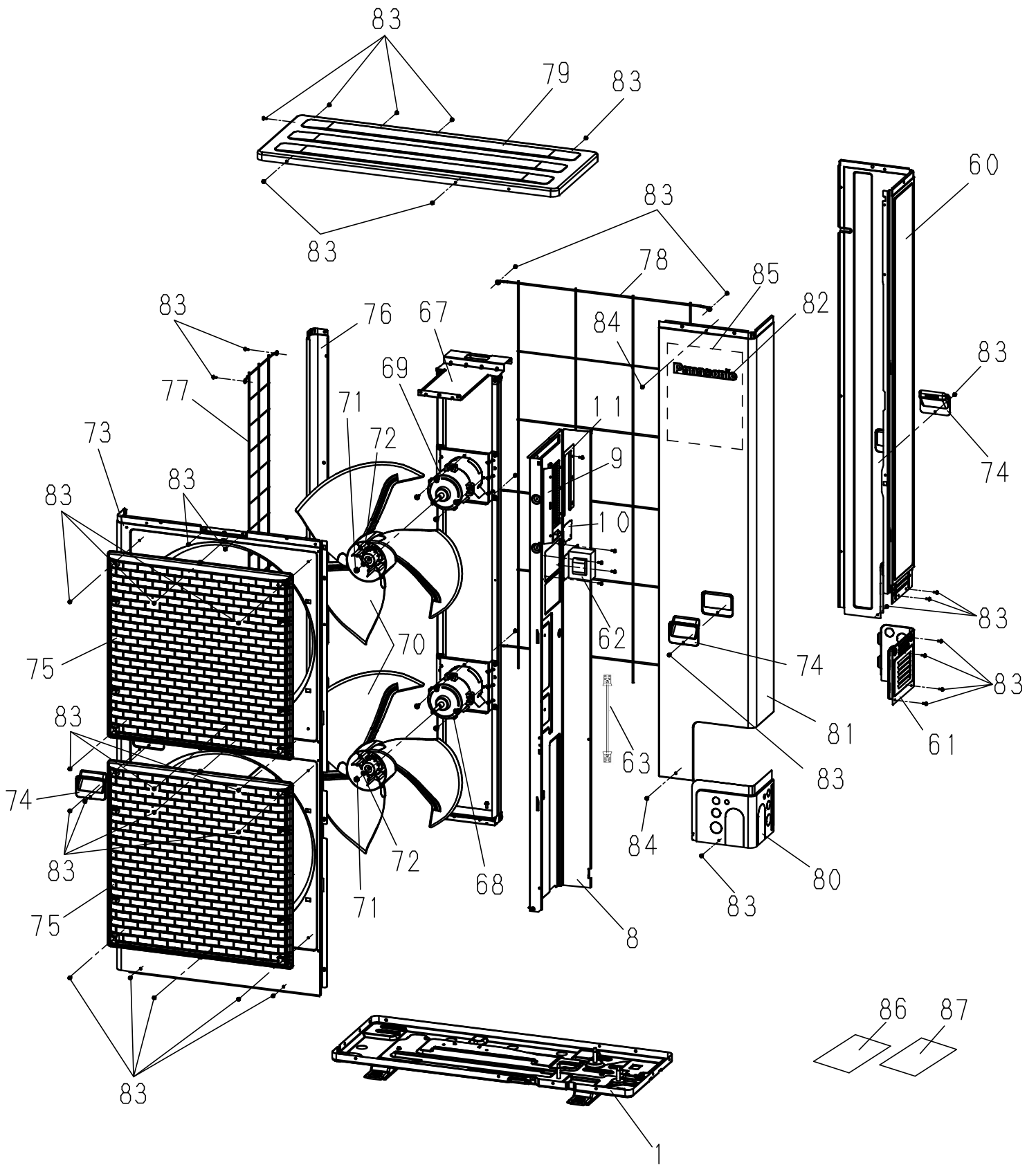
RoHS

• This product does not contain any hazardous substances prohibited by the **RoHS** Directive.

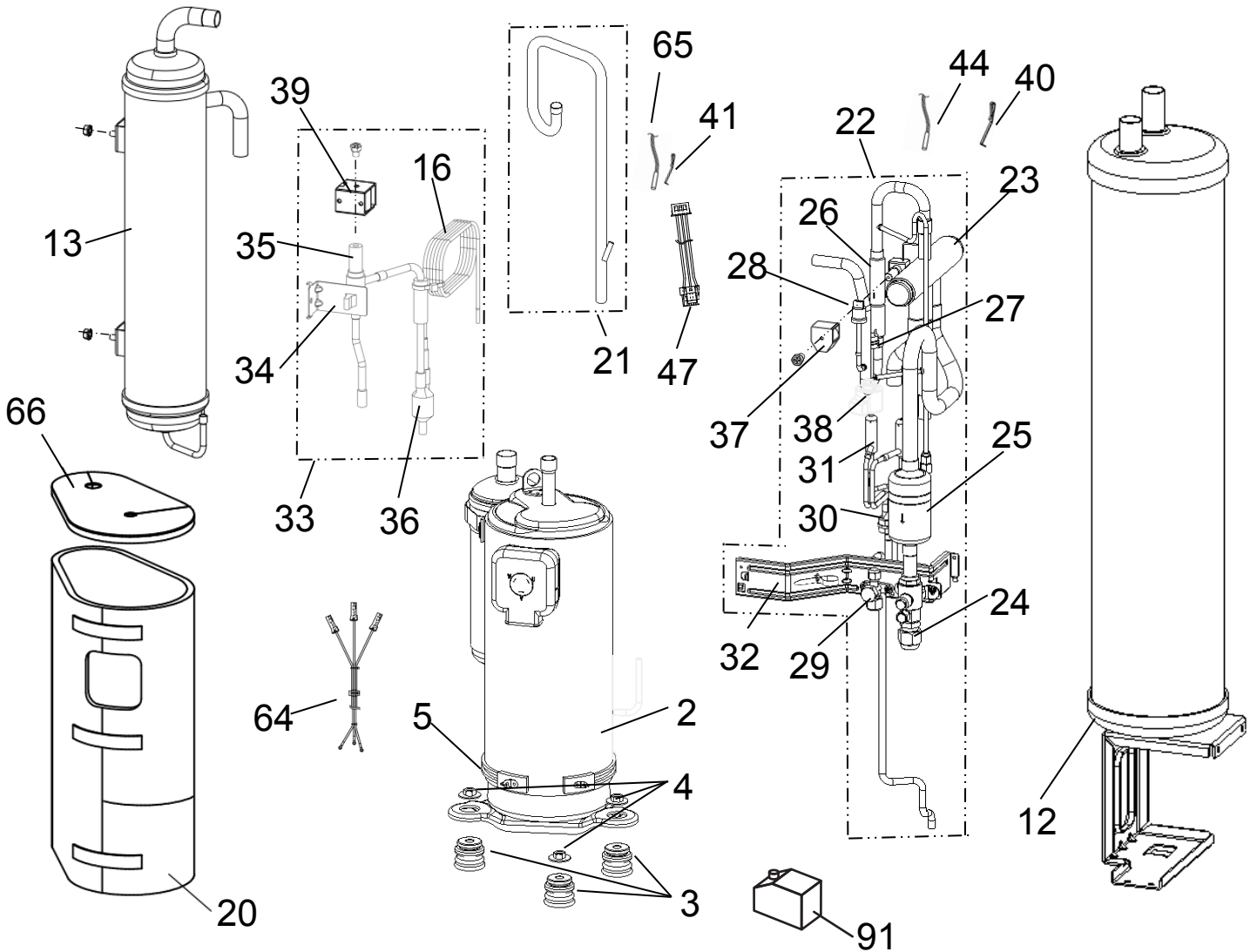
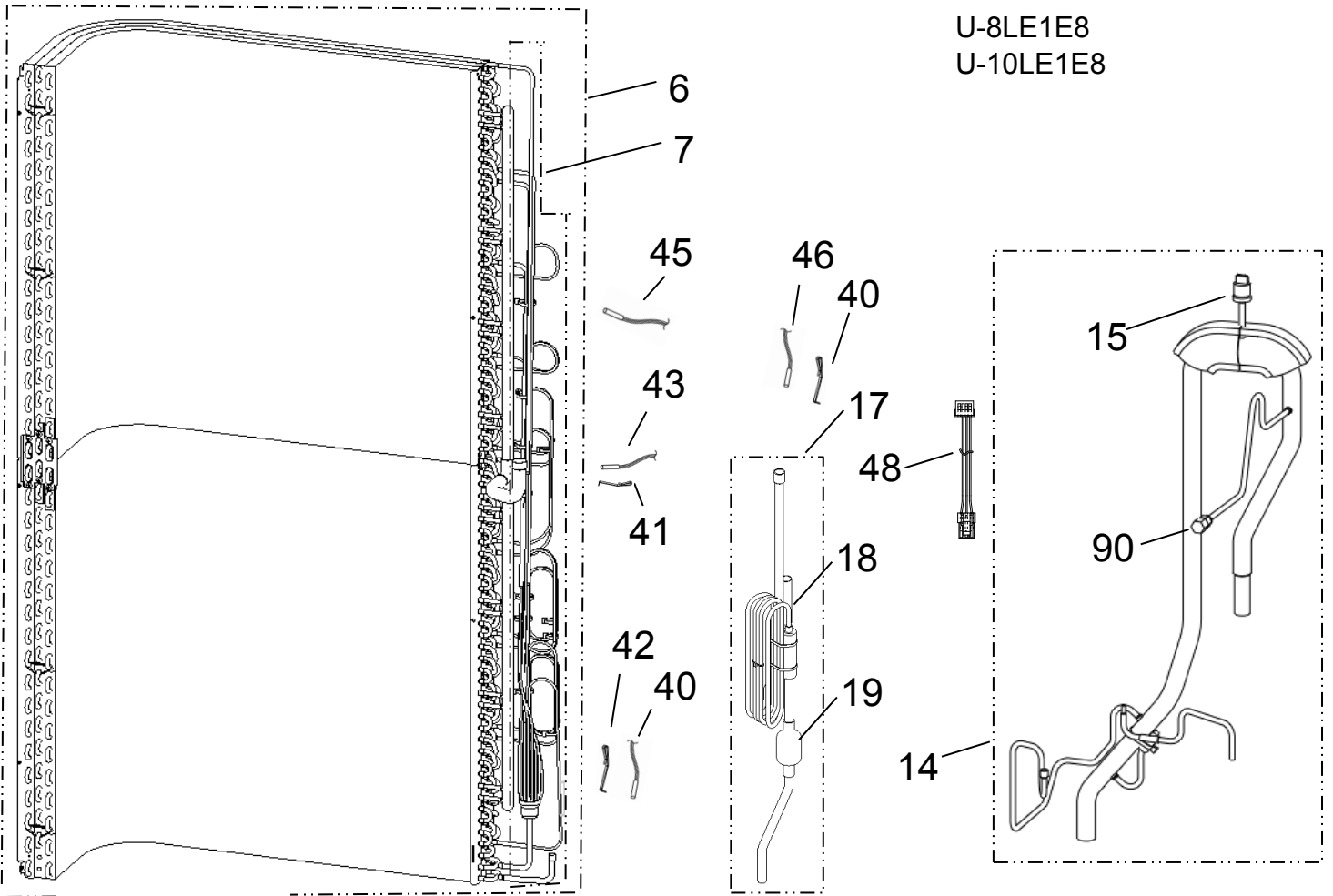
WARNING

- You are requested to use **RoHS** compliant parts for maintenance or repair.
- You are requested to use lead-free solder.

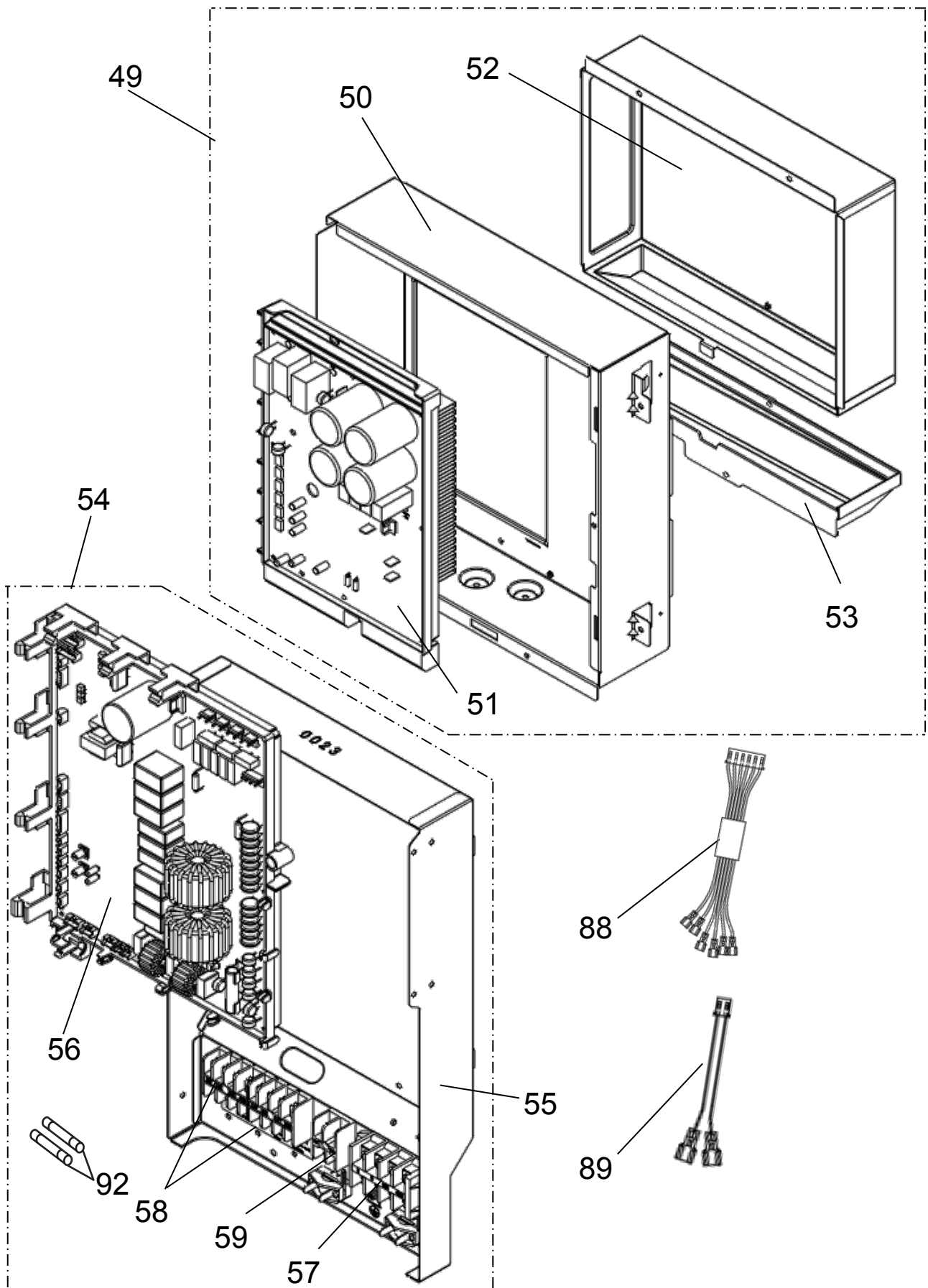
REFERENCE No. PH0616-0



U-8LE1E8
U-10LE1E8



U-8LE1E8
U-10LE1E8



ATTENTION!

To ensure correct parts supply ,please let us know the following,

Part No. when you make service parts order:

1.Part No. 2.Description 3.Q'ty 4.Volts-Hz-Ph 5.Product Model No.

Europe
U-8,10LE1E8
OUTDOOR UNIT

| KeyNo. | Description | 8Q'ty | 10Q'ty | Reference No. | Available in EyesG21 |
|--------|--------------------------------|-------|--------|---------------|----------------------|
| 1 | BASE PAN ASSY | 1 | 1 | CWD52K1396A | O |
| * | 2 COMPRESSOR | 1 | 1 | ACXB09-00470 | O |
| 3 | ANTI-VIBRATION BUSHING | 3 | 3 | CWH50055 | O |
| 4 | NUT | 3 | 3 | CWH561049 | O |
| * | 5 HEATER | 1 | 1 | ACXA34-00060 | O |
| 6 | CONDENSER COMPLETE | 1 | 1 | ACXB32C01080 | O |
| 7 | MANIFOLD TUBE ASSY | 1 | 1 | ACXT07K00460 | O |
| 8 | SOUND-PROOF BOARD | 1 | 1 | CWH151426 | O |
| 9 | PARTICULAR PIECE | 1 | 1 | CWD934083 | |
| 10 | PARTICULAR PIECE | 1 | 1 | CWD934094 | |
| 11 | PARTICULAR PLATE | 1 | 1 | ACXD90-00620 | |
| 12 | ACCUMULATOR | 1 | 1 | ACXB13-00040 | O |
| 13 | OIL SEPARATER | 1 | 1 | ACXB16-00010 | O |
| 14 | TUBE ASSY-COMplete | 1 | 1 | ACXT00C02530 | |
| * | 15 PRESSURE SENSING DEVICE | 1 | 1 | CWA501463 | O |
| 16 | CAPILLARY TUBE | 1 | 1 | ACXB15-00770 | O |
| 17 | CAPILLARY TUBE ASSY | 1 | 1 | ACXB15K00450 | O |
| 18 | CAPILLARY TUBE | 1 | 1 | ACXB15-00800 | |
| * | 19 STRAINER | 1 | 1 | CWB111070 | O |
| 20 | SOUND PROOF MATERIAL | 1 | 1 | ACXG30-00490 | O |
| 21 | TUBE ASSY | 1 | 1 | ACXT00-05060 | |
| 22 | TUBE ASSY-COMplete | 1 | 1 | ACXT00C02540 | |
| * | 23 4-WAYS VALVE | 1 | 1 | CWB001112 | O |
| * | 24 3-WAYS VALVE | 1 | 1 | CWB011859 | O |
| * | 25 STRAINER | 1 | 1 | ACXB11-00050 | O |
| * | 26 CHECK VALVE | 1 | 1 | CWB031110 | O |
| * | 27 PRESSURE SWITCH | 1 | 1 | CWA101033 | O |
| * | 28 PRESSURE SENSING DEVICE | 1 | 1 | CWA501463 | O |
| * | 29 3-WAYS VALVE | 1 | 1 | CWB011858 | O |
| * | 30 STRAINER | 2 | 2 | ACXB11-00040 | O |
| * | 31 EXPANSION VALVE | 2 | 2 | CWB051064 | O |
| 32 | PARTICULAR PLATE | 1 | 1 | CWD912678 | |
| 33 | TUBE ASSY-COMplete | 1 | 1 | ACXT00C02580 | |
| 34 | PARTICULAR PLATE | 1 | 1 | CWD912682 | |
| * | 35 2-WAYS VALVE | 1 | 1 | CWB021604 | O |
| 36 | STRAINER | 1 | 1 | CWB111058 | O |
| * | 37 V-COIL COMPLETE (20S) | 1 | 1 | ACXA43C00520 | O |
| * | 38 V-COIL COMPLETE (MOV1/MOV2) | 2 | 2 | ACXA43C00140 | O |
| * | 39 V-COIL COMPLETE (ORVR) | 1 | 1 | ACXA43C00390 | O |
| 40 | PLATE SPRING | 3 | 3 | CWH711010 | |
| 41 | PLATE SPRING | 2 | 2 | CWH711013 | |
| * | 42 THERMISTOR (EXL) | 1 | 1 | ACXA50C00370 | O |
| * | 43 THERMISTOR (EXG) | 1 | 1 | ACXA50C00520 | O |
| * | 44 THERMISTOR (SCT) | 1 | 1 | CWA50C2842 | O |
| * | 45 THERMISTOR (TO) | 1 | 1 | ACXA50C00710 | O |
| * | 46 THERMISTOR (OIL) | 1 | 1 | ACXA50C00540 | O |
| 47 | LEAD WIRE-COMplete (HPS) | 1 | 1 | ACXA60C03070 | O |
| 48 | LEAD WIRE-COMplete (LPS) | 1 | 1 | ACXA60C03080 | O |
| 49 | CONTROL BOARD-COMplete | 1 | 1 | ACXH10C04370 | |
| 50 | CONTROL BOARD | 1 | 1 | CWH102625 | O |

NOTE: Metal and plastic parts will be supplied basically with necessary heat insulation pads or packing. Each key number with an asterisk (*) means the recommended service parts.

ATTENTION!

To ensure correct parts supply ,please let us know the following,

Part No. when you make service parts order:

1.Part No. 2.Description 3.Q'ty 4.Volts-Hz-Ph 5.Product Model No.

Europe
U-8,10LE1E8
OUTDOOR UNIT

| KeyNo. | Description | 8Q'ty | 10Q'ty | Reference No. | Available in EyesG21 |
|--------|--------------------------------------|-------|--------|---------------|----------------------|
| * 51 | ELECTRONIC CONTROLLER-COMPLETE (HIC) | 1 | 1 | ACXA73C00720 | O |
| 52 | PARTICULAR PLATE-ASSY | 1 | 1 | ACXD90K00010 | |
| 53 | DRAIN PAN | 1 | 1 | CWH401093 | O |
| 54 | CONTROL BOARD-COMPLETE | 1 | 1 | ACXH10C05700 | |
| 55 | CONTROL BOARD ASSY | 1 | 1 | ACXH10K00140 | O |
| * 56 | PC BOARD W/COMPONENT | 1 | 1 | ACXA73C03490 | O |
| * 57 | TERMINAL BOARD ASSY | 1 | 1 | CWA28K1109 | O |
| * 58 | TERMINAL BOARD ASSY | - | - | - | |
| * 59 | TERMINAL BOARD ASSY | 1 | 1 | CWA28K1080J | O |
| 60 | CABINET REAR PLATE-COMPLETE | 1 | 1 | CWE02C1086 | O |
| 61 | L-SHAPED PLATE | 1 | 1 | CWD601317A | |
| 62 | FIXED INDUCTORS | 1 | 1 | G0C392J00015 | O |
| 63 | LEAD WIRE-COMPLETE (RE1/RE2) | 2 | 2 | ACXA60C03360 | |
| 64 | LEAD WIRE-COMPLETE (COMPRESSOR) | 1 | 1 | ACXA60C03060 | |
| * 65 | THERMISTOR (DISCH) | 1 | 1 | ACXA50C00530 | O |
| 66 | SOUND PROOF MATERIAL | 1 | 1 | CWG302993 | O |
| 67 | FAN MOTOR BRACKET ASSY | 1 | 1 | CWD54K1093 | O |
| * 68 | DC MOTORS (BRUSHLESS GENERAL USE) | 1 | 1 | L6CBYYL0148 | O |
| * 69 | DC MOTORS (BRUSHLESS GENERAL USE) | 1 | 1 | L6CBYYL0149 | O |
| 70 | FAN ASSY | 2 | 2 | CWH03K1103 | O |
| 71 | NUT | 2 | 2 | CWH561092 | O |
| 72 | WASHER | - | - | - | |
| 73 | CABINET FRONT PLATE | 1 | 1 | CWE061394A | O |
| 74 | HANDLE | 3 | 3 | CWE161024 | O |
| 75 | DISCHARGE GRILLE | 2 | 2 | CWE201236 | O |
| 76 | CABINET SIDE PLATE | 1 | 1 | CWE041848A | O |
| 77 | WIRE NET.RESIN NET | 1 | 1 | CWD041210A | O |
| 78 | WIRE NET.RESIN NET | 1 | 1 | CWD041211A | O |
| 79 | CABINET TOP PLATE-COMPLETE | 1 | 1 | ACXE03C00030 | O |
| 80 | L-SHAPED PLATE | 1 | 1 | CWD601316A | |
| 81 | CABINET FRONT PLATE-COMPLETE | 1 | 1 | CWE06C1560 | O |
| 82 | PANASONIC BADGE | 1 | 1 | CWE373439 | |
| 83 | SCREW | 47 | 47 | CWH551398 | |
| 84 | SCREW | 2 | 2 | CWH551391 | |
| 85 | WIRING DIAGRAM (CU) | 1 | 1 | ACXF22-01130 | |
| 86 | INSTALLATION INSTRUCTION | 1 | 1 | ACXF60-02760 | |
| 87 | OPERATING INSTRUCTION | 1 | 1 | ACXF55-01950 | |
| 88 | LEAD WIRE-COMPLETE (OPT1) | - | - | - | |
| 89 | LEAD WIRE-COMPLETE (OPT2) | - | - | - | |
| 90 | CHECK VALVE | 2 | 2 | CWB031094 | O |
| 91 | LUBRICATING OIL | 1 | 1 | Z86FV68S | O |
| * 92 | FUSE 30A 500V | 2 | 2 | K5D303YYA059 | O |

NOTE: Metal and plastic parts will be supplied basically with necessary heat insulation pads or packing. Each key number with an asterisk (*) means the recommended service parts.