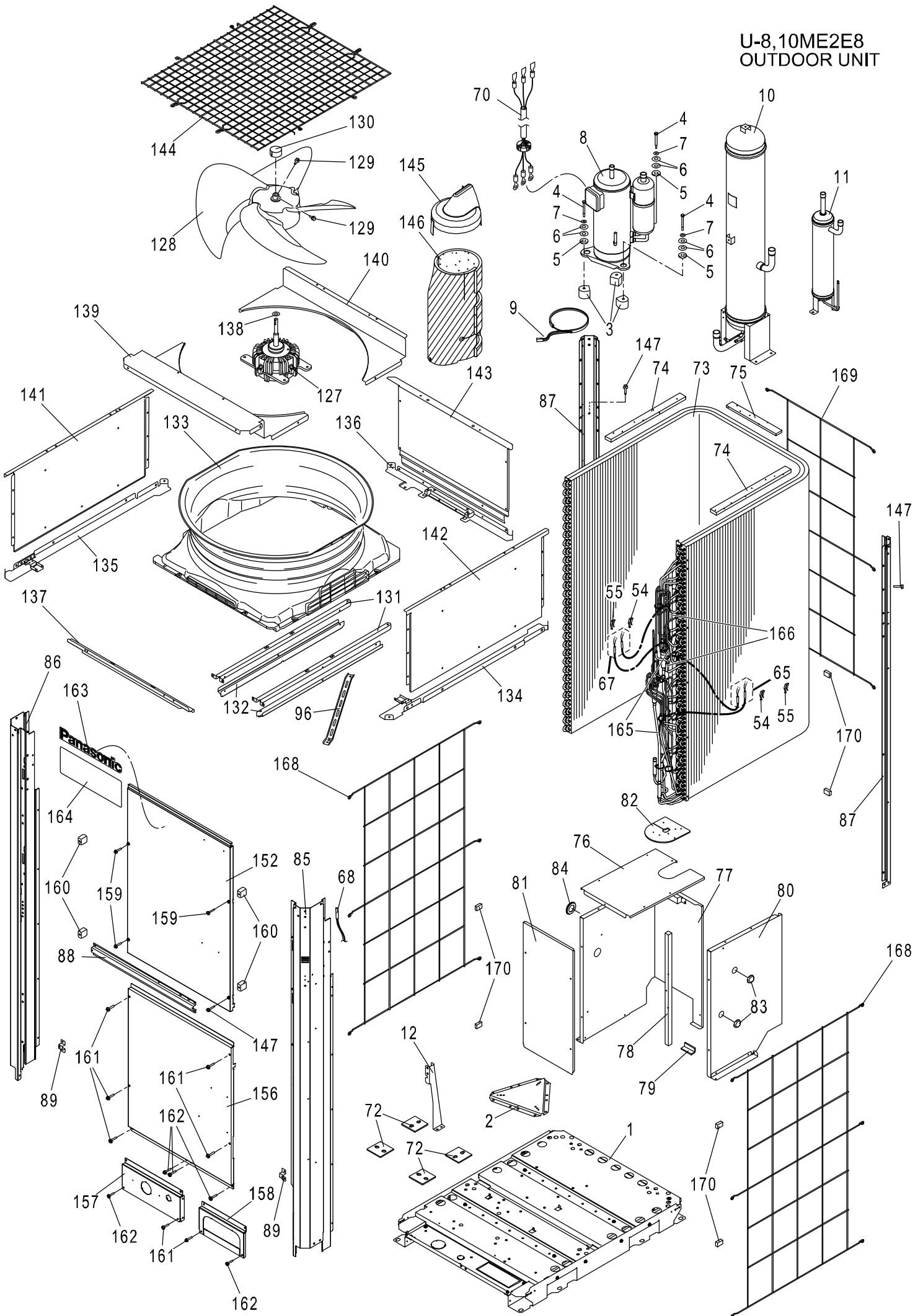
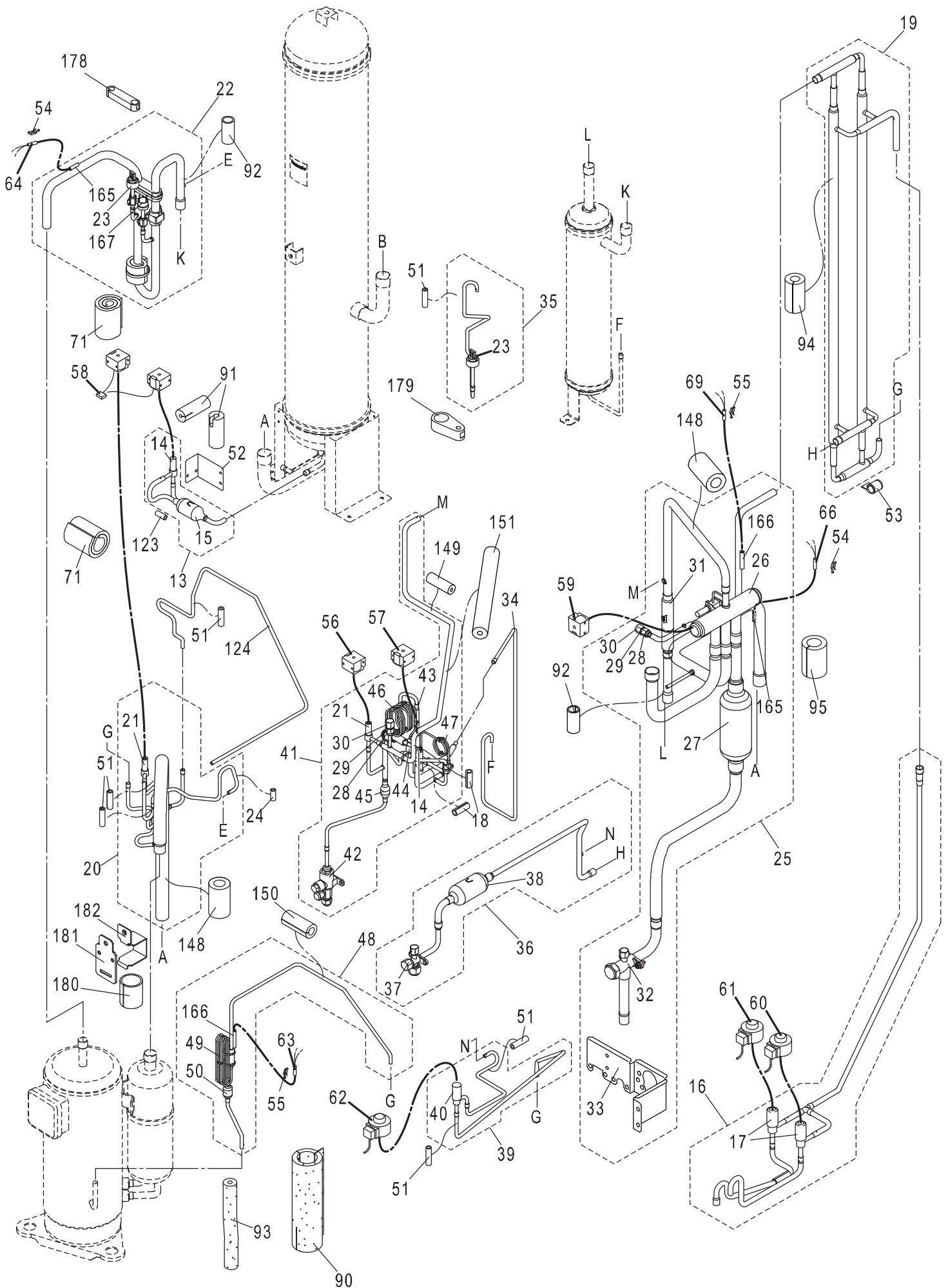


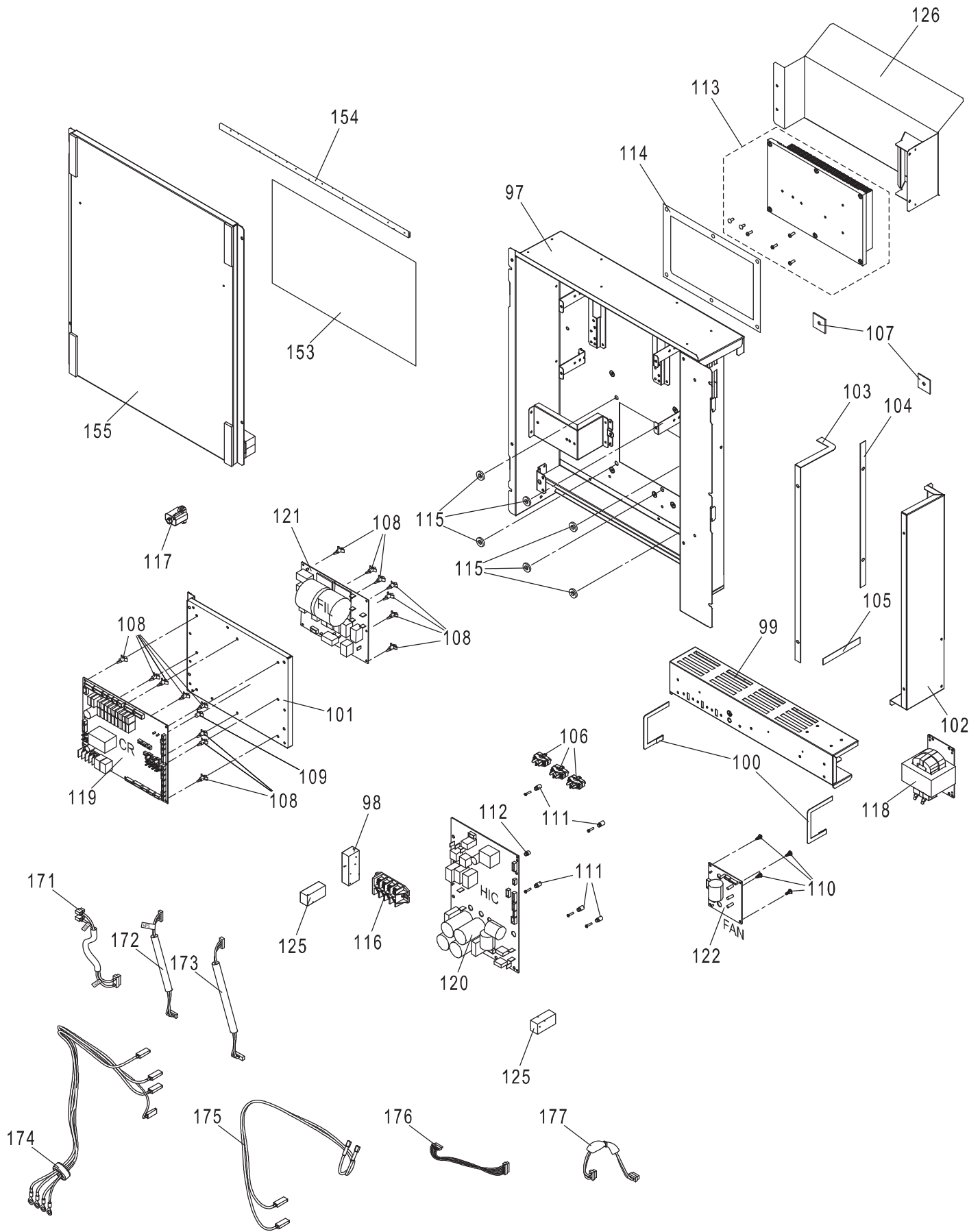
U-8,10ME2E8  
OUTDOOR UNIT



U-8,10ME2E8  
OUTDOOR UNIT



U-8,10ME2E8  
OUTDOOR UNIT



NOTE : Tube assembly (Part No. 20, 22, 35, 48, 124) design change from May, 2018.  
In case of tube assembly need to replaced for product stated below and serial no. is within the range,  
it is required to change total 5 tube assembly parts ( Part No. 200) at once.

Applicable Models and serial no. :

Region	Model	Serial No.
Europe	U-8ME2E8	63386 00001 – 63386 00489
	U-10ME2E8	63387 00001 – 63387 00857

# ATTENTION!

To ensure correct parts supply ,please let us know the following,

Part No. when you make service parts order:

U-8,10ME2E8  
OUTDOOR UNIT

1.Part No. 2.Description 3.Q'ty 4.Volts-Hz-Ph 5.Product Model No.

KeyNo.	Description	8Q'ty	10Q'ty	Reference No.	Available in EyesG21
1	BASE PAN-COMPLETE	1	1	CWD52C1031	o
2	PARTICULAR PLATE COMPLETE	1	1	CWD91C0268A	
3	ANTI-VIBRATION BUSHING	3	3	CWH501110	o
4	SCREW	3	3	CWH551325	o
5	SPACER	3	3	CWH541154	o
6	PLAIN WASHER	6	6	CWXWE65H30V	
7	WASHER	3	3	CWH571081	
*	8 COMPRESSOR (CWB092817)	1	1	5JD650ZCA22	o
*	9 HEATER	1	1	CWA341104	o
10	ACCUMULATOR ASSY	1	1	CWB13K1092	o
11	OIL SEPARATER	1	1	CWB161017	o
12	PARTICULAR PLATE	1	1	CWD912658	
*	13 2-WAYS VALVE ASSY	1	1	CWB02K1003	
*	14 2-WAYS VALVE (ORVR, ACV)	2	2	CWB021604	o
15	STRAINER	1	1	CWB111092	o
*	16 EXPANTION VALVE ASSY	1	1	ACXB05K00240	
*	17 EXPANTION VALVE (MOV1, MOV2)	2	2	ACXB05-01000	o
18	RUBBER	2	2	CWG251062	
19	TUBE ASSY	1	1	CWT028395	
*	20 2-WAYS VALVE ASSY	1	1	ACXB02K00100	
*	21 2-WAYS VALVE (BPV, SAVE)	2	2	CWB021580	o
22	TUBE ASSY	1	1	ACXT00-52230	
*	23 PRESSURE SENSING DEVICE	2	2	CWA501463	o
24	RUBBER	1	1	CWG251058	
*	25 4-WAYS VALVE ASSY	1		CWB00K1102	
*	25 4-WAYS VALVE ASSY		1	CWB00K1103	
*	26 4-WAYS VALVE (20S)	1		CWB001046	o
*	26 4-WAYS VALVE (20S)		1	CWB001112	o
27	STRAINER	1	1	CWB111072	o
28	TUBE CONNECTER	2	2	CWT291170	
29	CHECK VALVE	2	2	CWB031094	o
30	CAP	2	2	CWH521254	
31	CHECK VALVE	1	1	CWB031110	o
32	3-WAYS VALVE	1		CWB011853	o
32	3-WAYS VALVE		1	CWB011854	o
33	PARTICULAR PLATE	1	1	CWD912648	
34	MULTIBENT TUBE	1	1	CWT342718	
35	TUBE ASSY	1	1	ACXT00-52570	
36	TUBE ASSY	1	1	CWT030438	
37	3-WAYS VALVE	1	1	CWB011851	o
38	STRAINER	1	1	CWB111067	o
*	39 EXPANTION VALVE ASSY	1	1	CWB05K1014	
*	40 EXPANTION VALVE (MOV4)	1	1	CWB051050	o
41	TUBE ASSY	1	1	CWT030440	
42	3-WAYS VALVE	1	1	CWB011692	o
43	CHECK VALVE	1	1	CWB031102	o
44	STRAINER	1	1	CWB111068	o
45	STRAINER	1	1	CWB111069	o
*	46 CAPILLARY TUBE	1	1	CWB153571	o
*	47 CAPILLARY TUBE	1	1	CWB153236	o

NOTE: Metal and plastic parts will be supplied basically with necessary heat insulation pads or packing. Each key number with an asterisk (\*) means the recommended service parts.

# ATTENTION!

To ensure correct parts supply ,please let us know the following,

Part No. when you make service parts order:

U-8,10ME2E8

1.Part No. 2.Description 3.Q'ty 4.Volts-Hz-Ph 5.Product Model No.

OUTDOOR UNIT

KeyNo.	Description	8Q'ty	10Q'ty	Reference No.	Available in EyesG21
* 48	CAPILLARY TUBE ASSY	1	1	ACXB15K05220	
* 49	CAPILLARY TUBE	1	1	CWB153237	o
50	STRAINER	1	1	CWB111070	o
51	RUBBER	6	6	CWG251059	
52	L-PIECE	1	1	CWD701186	
53	C-PIECE-COMPLETE	1	1	CWD79C1002	
54	PLATE SPRING	4	4	CWH711013	
55	PLATE SPRING	4	4	CWH711025	
* 56	V-COIL COMPLETE (BPV)	1	1	CWA43C2668	o
* 57	V-COIL COMPLETE (ORVR)	1	1	CWA43C2671	o
* 58	V-COIL COMPLETE (ACV,SAVE)	1	1	CWA43C2674	o
* 59	V-COIL COMPLETE (20S)	1	1	ACXA43C00070	o
* 60	V-COIL COMPLETE (MOV1)	1	1	CWA43C2679X	o
* 61	V-COIL COMPLETE (MOV2)	1	1	CWA43C2681X	o
* 62	V-COIL COMPLETE (MOV4)	1	1	CWA43C2519	o
* 63	THERMISTOR (OIL)	1	1	CWA50C3338	o
* 64	THERMISTOR (DISCH)	1	1	CWA50C3341	o
* 65	THERMISTOR (EXL1,2)	1	1	CWA50C3345	o
* 66	THERMISTOR (SCT)	1	1	CWA50C3354	o
* 67	THERMISTOR (EXG1,2)	1	1	CWA50C3348	o
* 68	THERMISTOR (TO)	1	1	CWA50C3335	o
* 69	THERMISTOR (SCG)	1	1	CWA50C3351	o
* 70	LEAD WIRE-COMPLETE	1	1	CWA68C2193	
71	BUTYL TAPE	2	2	KG8AF70-160	
72	SPACER	4	4	CWH541156	
73	FIN & TUBE CONDENSER COMPLETE	1	1	CWB32C4203	o
74	EPT SEAL	2	2	CWD15A35-450	
75	EPT SEAL	1	1	CWD10A35-300	
76	SOUND-PROOF BOARD	1	1	CWH151413	
77	SOUND-PROOF BOARD ASSY	1	1	CWH15K1080	
78	EPT SEAL	1	1	CWD20A20-580	
79	EPT SEAL	1	1	CWD3A40-60	
80	SOUND-PROOF BOARD ASSY	1	1	CWH15K1081	
81	SOUND-PROOF BOARD	1	1	CWH151414	
82	RUBBER	1	1	CWG251091	
83	RUBBER	2	2	CWG251068	
84	RUBBER	1	1	CWG251069	
85	CABINET SIDE PLATE ASSY	1	1	CWE04K1199A	o
86	CABINET SIDE PLATE	1	1	CWE041843A	o
87	CABINET SIDE PLATE	2	2	CWE041844A	o
88	PARTICULAR PLATE	1	1	CWD912656	
89	PARTICULAR PIECE	2	2	CWD934068	
90	ADH. POLY-E. FOAM	1	1	CWG123162	
91	ADH. POLY-E. FOAM	2	2	CWG123541	
92	RUBBER	2	2	CWG251065	
93	ADH. POLY-E. FOAM	1	1	CWG123542	
94	ADH. POLY-E. FOAM	1	1	CWG123545	
95	ADH. POLY-E. FOAM	1	1	CWG123546	
96	PARTICULAR PLATE	1	1	CWD912644	
97	CONTROL BOARD ASSY	1	1	CWH10K1258	

NOTE: Metal and plastic parts will be supplied basically with necessary heat insulation pads or packing. Each key number with an asterisk (\*) means the recommended service parts.

# ATTENTION!

To ensure correct parts supply ,please let us know the following,

Part No. when you make service parts order:

U-8,10ME2E8

1.Part No. 2.Description 3.Q'ty 4.Volts-Hz-Ph 5.Product Model No.

OUTDOOR UNIT

KeyNo.	Description	8Q'ty	10Q'ty	Reference No.	Available in EyesG21	
98	EPT SEAL (FLAMEPROOF)	1	1	CWDN20A30-75		
99	DUCT ASS.Y	1	1	CWD22K1002		
100	ADH. POLY-E. FOAM	2	2	CWG123548		
101	PARTICULAR PLATE	1	1	CWD912663		
102	DUCT	1	1	CWD221091		
103	ADH. POLY-E. FOAM	1	1	CWG123549		
104	ADH. POLY-E. FOAM	1	1	CWG123550		
105	POLY-E.FOAM	1	1	CWE2A15-110		
106	HOLDER-P.S. CORD	3	3	CWH311080		
107	ADH. POLY-E. FOAM	2	2	CWG123558		
108	SPACER	15	15	CWH541203		
109	SPACER	1	1	CWH541204		
110	SPACER	4	4	CWH541205		
111	SPACER	5	5	CWH541206		
112	SPACER	1	1	CWH541207		
113	HEATSINK	1	1	ACXA58K00010		
114	INSULATION	1	1	CWA621014		
115	SPACER	6	6	CWH541153		
*	116	TERMINAL BOARD ASSY	1	1	CWA28K1109	o
*	117	PTC THERMISTORS	1	1	D4DDG1010001	o
*	118	FIXED INDUCTORS	1		G0C392J00015	o
*	118	FIXED INDUCTORS		1	G0C252K00001	o
*	119	PC BOARD W/COMPONENT	1	1	CWA73C9052	o
*	120	ELEC.CONTROLLER-COMPLETE(HIC)	1	1	CWA73C9053	o
*	121	ELECTRONIC CONTROLLER (FIL)	1	1	ACXA73-30540	o
*	122	ELECTRONIC CONTROLLER (FAN)	1	1	ACXA73-36140	o
	123	RUBBER	1	1	CWG251060	
	124	MULTIBENT TUBE	1	1	ACXT30-84050	
	125	EPT SEAL (FLAMEPROOF)	2	2	CWDN20A25-55	
	126	DUCT ASS.Y	1	1	CWD22K1004	
*	127	MOTOR (LARGE DC)	1	1	CWDMSBG75SY	o
*	128	FAN ASSY	1	1	CWH03K1082	o
	129	BOLT	2	2	CWXVG6A10FJ4	o
	130	CAP	1	1	CWH521248	
	131	FAN MOTOR BRACKET	2	2	CWD541258	
	132	AIR REGULATING PLATE	2	2	CWD211007	
	133	AIR GUIDER P.F.	1	1	CWD311030	o
	134	FAN MOTOR BRACKET ASSY	1	1	CWD54K1087	
	135	FAN MOTOR BRACKET ASSY	1	1	CWD54K1088	
	136	FAN MOTOR BRACKET ASSY	1	1	CWD54K1089	
	137	FAN MOTOR BRACKET	1	1	CWD541194	
	138	SPACER	1	1	CWH541158	
	139	CABINET TOP PLATE-COMPLETE	1	1	CWE03C1170	
	140	CABINET TOP PLATE-COMPLETE	1	1	CWE03C1171	
	141	CABINET SIDE PLATE	1	1	CWE041845A	o
	142	CABINET SIDE PLATE	1	1	CWE041846A	o
	143	CABINET REAR PLATE	1	1	CWE021131A	o
	144	WIRE NET ASSY	1	1	CWD04K1004A	
	145	SOUND PROOF MATERIAL	1	1	CWG302976	o
	146	RAIN COVER-COMPLETE	1	1	CWH81C1005	

NOTE: Metal and plastic parts will be supplied basically with necessary heat insulation pads or packing. Each key number with an asterisk (\*) means the recommended service parts.

## ATTENTION!

To ensure correct parts supply, please let us know the following,

Part No. when you make service parts order:

U-8,10ME2E8

1.Part No. 2.Description 3.Q'ty 4.Volts-Hz-Ph 5.Product Model No.

OUTDOOR UNIT

KeyNo.	Description	8Q'ty	10Q'ty	Reference No.	Available in EyesG21
147	SCREW	3	3	CWH551332A	
148	ADH. POLY-E. FOAM	3	3	CWG123167	
149	ADH. POLY-E. FOAM	1	1	CWG123551	
150	ADH. POLY-E. FOAM	1	1	CWG123173	
151	ADH. POLY-E. FOAM	1	1	CWG123553	
152	CABINET FRONT PLATE-COMplete	1	1	CWE06C1548	o
* 153	WIRING DIAGRAM (CU)	1	1	ACXF22-01160	
154	POLY-E.FOAM	1	1	CWE2A25-550	
155	CONTROL BOARD COVER-COMplete	1	1	CWH13C1346	
156	CABINET FRONT PLATE	1	1	CWE061390A	o
157	CABINET FRONT PLATE-COMplete	1	1	CWE06C1550	o
158	CABINET FRONT PLATE-COMplete	1	1	CWE06C1551	o
159	SCREW	3	3	CWH551333A	
160	SPACER	4	4	CWH541152	
161	SCREW	7	7	CWH551448	
162	SCREW	5	5	CWH551326A	
163	BADGE	1	1	CWE373439	
164	BADGE	1	1	ACXE37-02510	
165	STRAIGHT TUBE	4	4	CWT102194	
166	STRAIGHT TUBE	4	4	CWT103083	
* 167	PRESSURE SWITCH	1	1	CWA101033	o
168	WIRE NET.RESIN NET	2	2	ACXD04-00050A	
169	WIRE NET.RESIN NET	1	1	ACXD04-00060A	
170	EPT SEAL (FLAMEPROOF)	6	6	CWDN20A20-30	
* 171	LEAD WIRE-COMplete (63PH)	1	1	CWA68C2172	
* 172	LEAD WIRE-COMplete (HPS)	1	1	CWA68C2174	
* 173	LEAD WIRE-COMplete (LPS)	1	1	CWA68C2176	
* 174	LEAD WIRE-COMplete (TB-FIL)	1	1	CWA68C2184	
* 175	LEAD WIRE-COMplete (RE)	1	1	CWA68C2186	
* 176	LEAD WIRE-COMplete (L-POW (R ))	1	1	CWA68C2188	
* 177	LEAD WIRE-COMplete (CR-AC-IN)	1	1	CWA68C2192	
178	RUBBER	1	1	ACXG25-02020	
179	RUBBER	1	1	ACXG25-02100	
180	RUBBER	1	1	ACXG25-02040	
181	PARTICULAR PIECE	1	1	ACXD93-18190	
182	PARTICULAR PIECE	1	1	ACXD93-18200	
200	TUBE ASSY COMPLETE	1	1	ACXB02C00030	
-	INSTALLATION INSTRUCTION	1	1	ACXF60-03480	
-	OPERATING INSTRUCTION	1	1	ACXF55-03680	

NOTE: Metal and plastic parts will be supplied basically with necessary heat insulation pads or packing. Each key number with an asterisk (\*) means the recommended service parts.