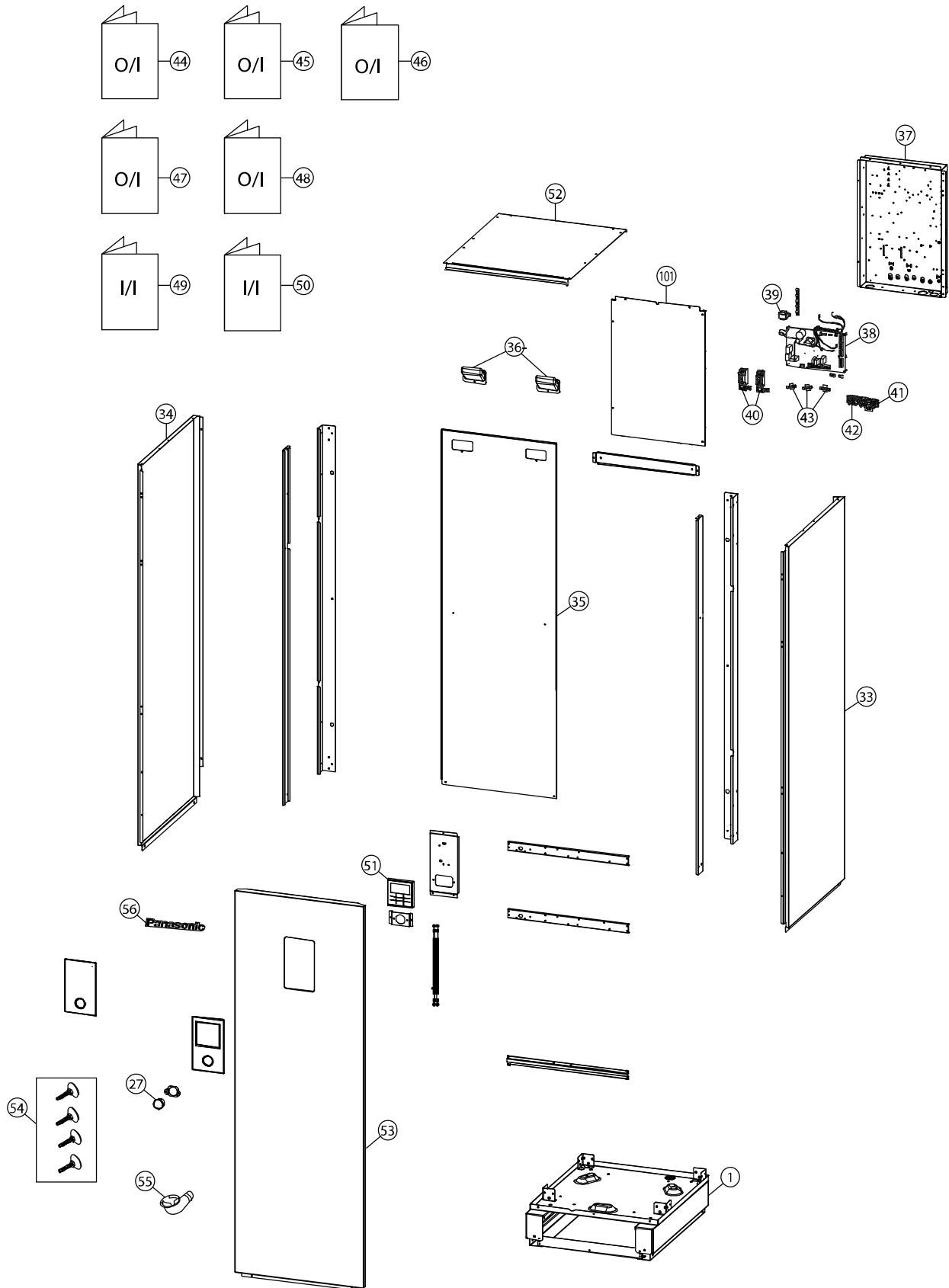


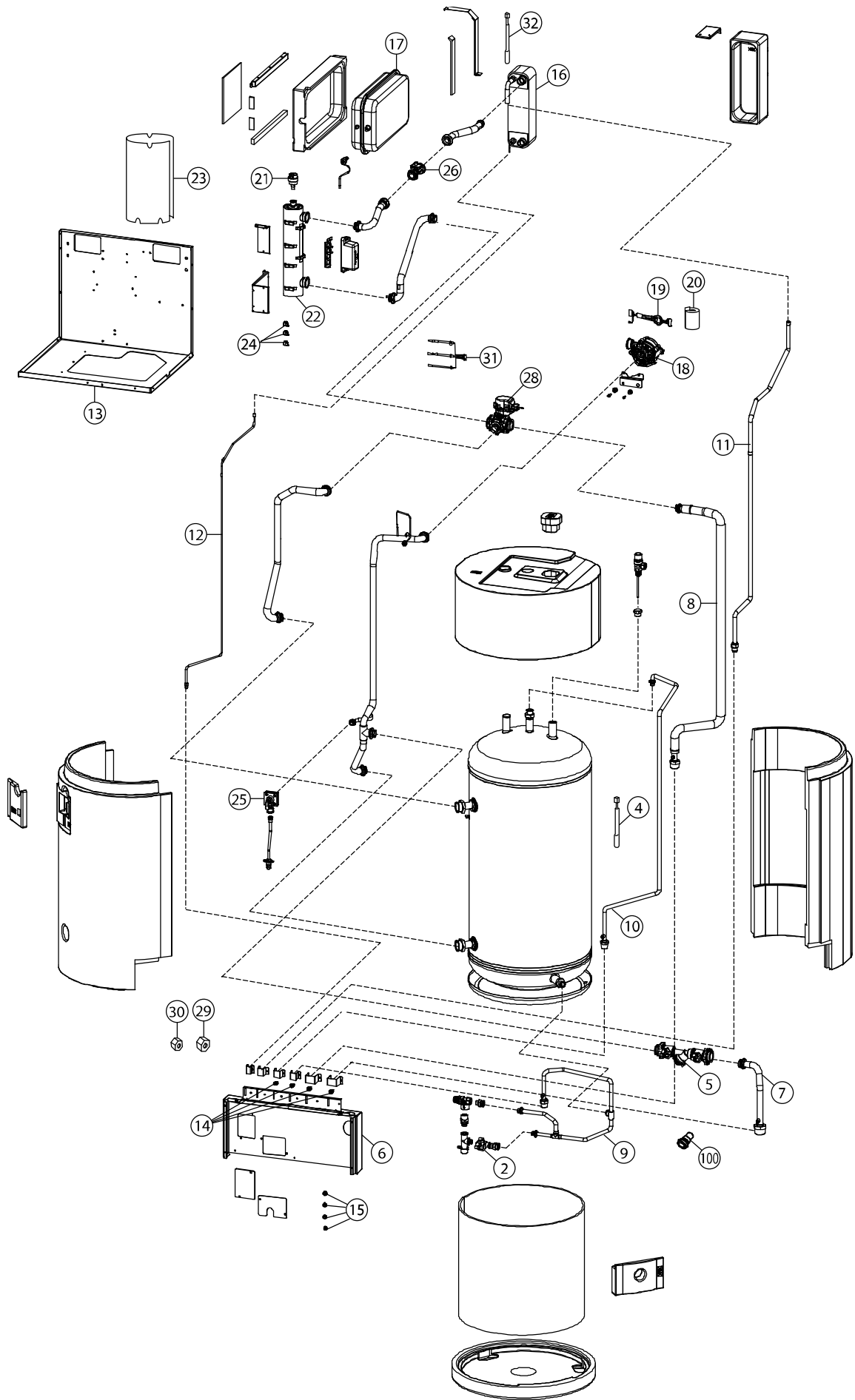
20. Exploded View and Replacement Parts List

20.1 Indoor Unit



Note:

- The above exploded view is for the purpose of parts disassembly and replacement.
- The non-numbered parts are not kept as standard service parts.



Note:

- The above exploded view is for the purpose of parts disassembly and replacement.
- The non-numbered parts are not kept as standard service parts.

SAFETY	REF. NO.	DESCRIPTION	QTY.	WH-ADC1216H6E5	REMARK
	1	CHASSIS COMPLETE	1	ACXD50C00250	
	2	DRAIN VALVE	1	CWB65C1026	O
	4	SENSOR CO . (TANK TEMP CN - TH2)	1	CWA50C3257	O
	5	FILTER COMPLETE	1	CWB51C1021	
	6	HOLDER - COUPLING	1	ACXH35-00040	
	7	TUBE CONNECTER (WATER IN)	1	ACXT00C03600	
	8	TUBE CONNECTER (WATER OUT)	1	ACXT00C03620	
	9	TUBE CONNECTER (COLD WATER INLET)	1	ACXT00C03370	
	10	TUBE CONNECTER (HOT WATER OUTLET)	1	ACXT00C03520	O
	11	TUBE CONNECTER (REF. GAS)	1	ACXT00C06250	
	12	TUBE CONNECTER (REF. LIQUID)	1	ACXT00C06240	
	13	BASE PAN (HEATER)	1	ACXD52-00260	
	14	PURGE PLUG	4	CWB821027	O
	15	O - RING (PURGE PLUG)	4	CWB811224	
	16	HOT WATER COIL - COMPLETE	1	ACXB90C00430	
	17	RECEIVER	1	CWB141039	
⚠	18	WATER PUMP	1	CWB532116	O
	19	LEAD WIRE FOR WATER PUMP	1	CWA68C1437	O
⚠	20	V - COIL	1	CWA431122	
	21	AIR PURGE VALVE	1	ACXB62-00130	
⚠	22	HEATER ASS'Y	1	ACXA34K00100	O
	23	SOUND PROOF MATERIAL	1	ACXG30-00680	
	24	THERMOSTAT	3	CWA151074	
	25	PRESSURE RELIEF VALVE	1	ACXB62-00100	O
	26	FLOW SWITCH	1	CWB621137	
	27	PRESSURE GAUGE	1	CWB070003	O
	28	3 WAY VALVE (WATER)	1	ACXB62-00090	O
	29	FLARE NUT (5/8)	1	CWT251064	
	30	FLARE NUT (1/4)	1	CWT251063	
	31	SENSOR - CO. (WATER IN OUT, REF TEMP SENSOR CN - TH1)	1	ACXA50C00650	O
	32	SENSOR - CO. (HEX WATER OUTLET TEMP CN - TH3)	1	ACXA50C00660	O
	33	CABINET SIDE PLATE (R)	1	ACXE04-00390A	
	34	CABINET SIDE PLATE (L)	1	ACXE04-00400A	
	35	CABINET REAR PLATE	1	ACXE02-00070	
	36	HANDLE	2	CWE161014	
	37	CONTROL BOARD	1	ACXH10-00710	
⚠	38	ELECTRONIC CONTROLLER - MAIN	1	ACXA73C28780	O
⚠	39	REACTOR	1	G0C103Z00003	O
⚠	40	RESIDUALCURRENT - CIRCUIT BREAKER	2	K5KYYAY00003	O
⚠	41	TERMINAL BOARD ASSY (1,2,3)	1	CWA28K1217	O
⚠	42	TERMINAL BOARD ASSY (A,B)	1	CWA28K1238	O
	43	HOLDER - P.S. CORD	3	CWH31103	
	44	OPERATING INSTRUCTION	1	ACXF55-10490	
	45	OPERATING INSTRUCTION	1	ACXF55-10500	
	46	OPERATING INSTRUCTION	1	ACXF55-10510	
	47	OPERATING INSTRUCTION	1	ACXF55-10520	

SAFETY	REF. NO.	DESCRIPTION	QTY.	WH-ADC1216H6E5	REMARK
	48	OPERATING INSTRUCTION	1	ACXF55-10530	
	49	INSTALLATION INSTRUCTION	1	ACXF60-05510	
	50	INSTALLATION INSTRUCTION	1	ACXF60-03260	
	51	REMOTE CONTROL COMPLETE	1	CWA75C4681	O
	52	CABINET TOP PLATE	1	ACXE03K00040	
	53	CABINET FRONT PLATE	1	ACXE06-00030A	
	54	ACCESSORY - COMPLETE	1	CWH82C2112	
	55	ACCESSORY CO. (DRAIN ELBOW)	1	CWG87C900	
	56	BADGE	1	CWE375343	
	100	FILTER COMPLETE	1	ACXB51-00080	
	101	CONTROL BOARD COVER	1	ACXH13-00360	

Note:

- All parts are supplied from PAPAMY, Malaysia (Vendor Code: 00029488) except (*).
- "O" marked parts are recommended to be kept in stock.