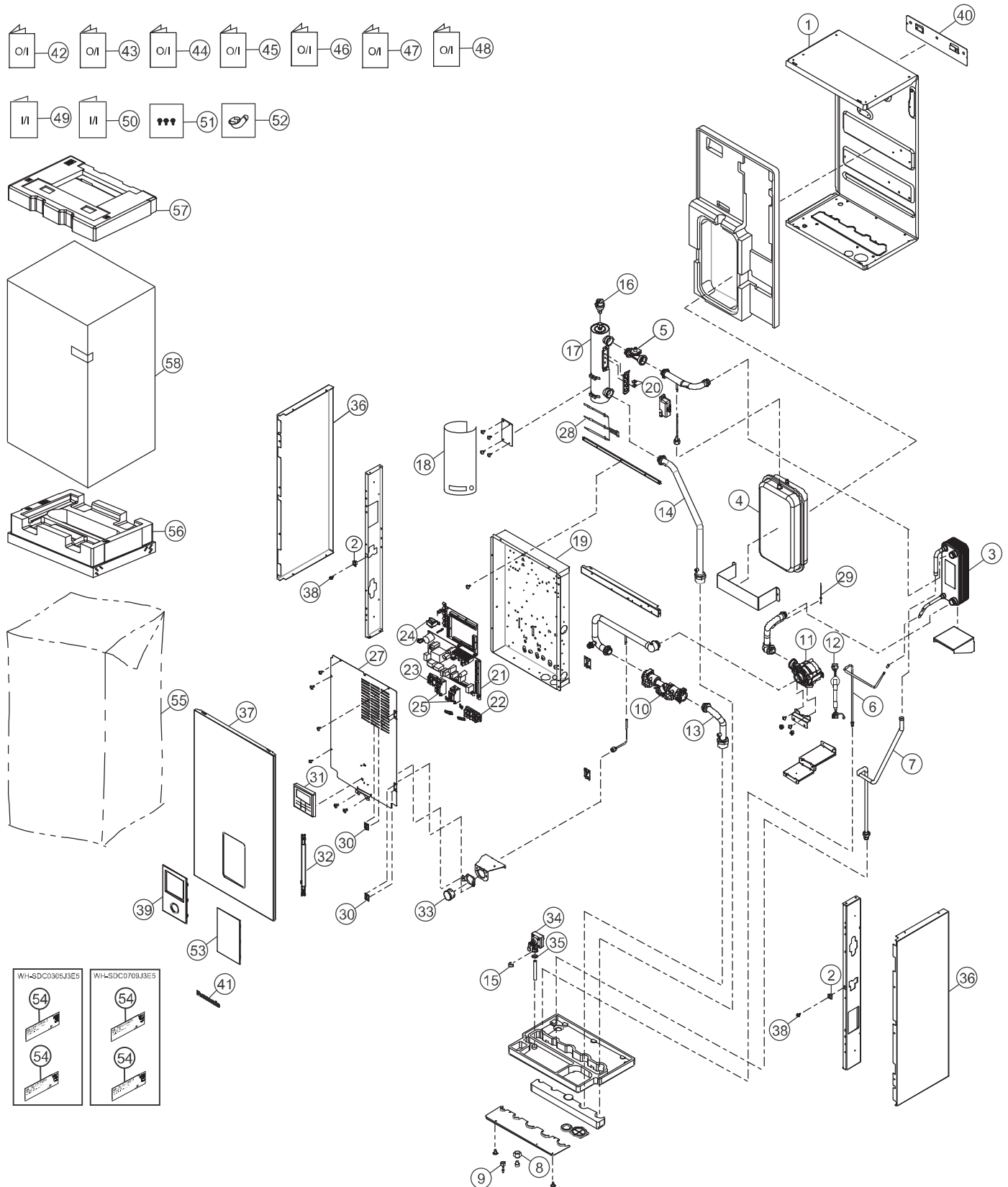


21. Exploded View and Replacement Parts List

21.1 Indoor Unit



Note:
 The above exploded view is for the purpose of parts disassembly and replacement.
 The non-numbered parts are not kept as standard service parts.

| SAFETY | REF. NO. | DESCRIPTION & NAME | QTY. | WH-SDC0305J3E5 | WH-SDC0709J3E5 | REMARK |
|--------|----------|--|------|----------------|----------------|--------|
| | 1 | BASE PAN | 1 | CWD521450 | ← | |
| | 2 | CATCHER | 2 | CWH601011 | ← | |
| | 3 | HOT WATER COIL - COMPLETE | 1 | ACXB90C00950 | ← | |
| | 4 | RECEIVER | 1 | CWB141039 | ← | |
| ⚠ | 5 | FLOW SENSOR | 1 | ACXB62-00911 | ← | ○ |
| | 6 | TUBE CONNECTOR - COMPLETE (1) | 1 | ACXT00C27750 | ← | |
| | 7 | TUBE CONNECTOR - COMPLETE (2) | 1 | ACXT00C27760 | ACXT00C27800 | |
| | 8 | FLARE NUT (7/8) / (5/8) | 1 | CWT251032 | CWT251064 | |
| | 9 | FLARE NUT (1/4) | 1 | CWT251063 | ← | |
| | 10 | FILTER COMPLETE | 1 | ACXB51C00100 | ← | |
| ⚠ | 11 | WATER PUMP | 1 | ACXB53-00390 | ← | |
| ⚠ | 12 | LEADWIRE (WATER PUMP TO PCB) | 1 | ACXA60C77950 | ← | |
| | 13 | TUBE CONNECTOR - COMPLETE (3) | 1 | CWT01C7166 | ← | |
| | 14 | TUBE CONNECTOR - COMPLETE (4) | 1 | CWT01C7168 | ← | |
| | 15 | RETAINING RING D:22mm | 1 | CWH581007 | ← | |
| ⚠ | 16 | AIR PURGE VALVE | 1 | ACXB62-00130 | ← | ○ |
| ⚠ | 17 | HEATER ASS'Y | 1 | ACXA34K00070 | ← | |
| | 18 | SOUND PROOF MATERIAL | 1 | ACXG30-00680 | ← | |
| | 19 | CONTROL BOARD | 1 | CWH102629 | ← | |
| ⚠ | 20 | THERMOSTAT | 2 | CWA151074 | ← | ○ |
| ⚠ | 21 | ELECTRONIC CONTROLLER - MAIN | 1 | ACXA73C56640 | ACXA73C56650 | ○ |
| ⚠ | 22 | TERMINAL BOARD ASS'Y (1,2,3) | 1 | CWA28K1217 | ← | ○ |
| ⚠ | 23 | TERMINAL BOARD ASS'Y (A,B) | 1 | CWA28K1238 | ← | ○ |
| ⚠ | 24 | REACTOR | 1 | G0C103Z00003 | ← | ○ |
| ⚠ | 25 | RESIDUAL CURRENT CIRCUIT BREAKER | 2 | K5KYAY00003 | ← | ○ |
| | 27 | CONTROL BOARD COVER | 1 | CWH131692 | ← | |
| ⚠ | 28 | SENSOR - COMP. (WATER IN, OUT & REF TEMP CN-TH1) | 1 | ACXA50C15270 | ← | ○ |
| ⚠ | 29 | SENSOR - COMP. (HEX WATER OUTLET TEMP CN-TH3) | 1 | ACXA50C15280 | ← | ○ |
| | 30 | HINGE | 2 | CWH611007 | ← | |
| ⚠ | 31 | REMOTE CONTROL COMPLETE | 1 | ACXA75C15750 | ← | ○ |
| ⚠ | 32 | LEADWIRE REMOTE CONTROL 700mm | 1 | CWA68C2284 | ← | |
| | 33 | PRESSURE GAUGE | 1 | CWB070003 | ← | ○ |
| | 34 | PRESSURE RELIEF VALVE | 1 | ACXB62-00740 | ← | ○ |
| | 35 | PACKING | 2 | CWB811195 | ← | |
| | 36 | CABINET SIDE PLATE | 2 | CWE041850A | ← | |
| | 37 | CABINET FRONT PLATE | 1 | CWE061396A | ← | |
| | 38 | LOCK | 2 | CWH891004 | ← | |
| | 39 | DECORATION BASE ASS'Y | 1 | CWE35K1285 | ← | |
| | 40 | INSTALLING HOLDER | 1 | CWH361103A | ← | |
| | 41 | PANASONIC BADGE | 1 | CWE375343 | ← | |
| | 42 | OPERATING INSTRUCTION | 1 | ACXF55-24760 | ← | |

| SAFETY | REF. NO. | DESCRIPTION & NAME | QTY. | WH-SDC0305J3E5 | WH-SDC0709J3E5 | REMARK |
|--------|----------|-----------------------------------|------|----------------|----------------|--------|
| | 43 | OPERATING INSTRUCTION | 1 | ACXF55-24770 | ← | |
| | 44 | OPERATING INSTRUCTION | 1 | ACXF55-24780 | ← | |
| | 45 | OPERATING INSTRUCTION | 1 | ACXF55-24790 | ← | |
| | 46 | OPERATING INSTRUCTION | 1 | ACXF55-24800 | ← | |
| | 47 | OPERATING INSTRUCTION | 1 | ACXF55-24810 | ← | |
| | 48 | OPERATING INSTRUCTION | 1 | ACXF55-25470 | ← | |
| | 49 | INSTALLATION INSTRUCTION | 1 | ACXF60-36990 | ← | |
| | 50 | INSTALLATION INSTRUCTION | 1 | ACXF60-37651 | ← | |
| | 51 | ACCESSORY - COMPLETE (SCREW) | 1 | CWH82C1754 | ← | |
| | 52 | ACCESSORY - COMPLETE (L-TUBE) | 1 | CWG87C900 | ← | |
| | 53 | ACCESSORY - CO. (DECORATION BASE) | 1 | CWH82C2174 | ← | |
| | 54 | MODEL LABEL | 2 | ACXF85-22780 | ← | |
| | 55 | BAG | 1 | ACXG86-04150 | ← | |
| | 56 | BASE BOARD - COMPLETE | 1 | ACXG62C01900 | ← | |
| | 57 | SHOCK ABSORBER | 1 | CWG713773 | ← | |
| | 58 | C.C. CASE | 1 | ACXG50-47950 | ← | |

Note:

- All parts are supplied from PAVCCZ, (Vendor Code: 00029407).
- "O" marked parts are recommended to be kept in stock.