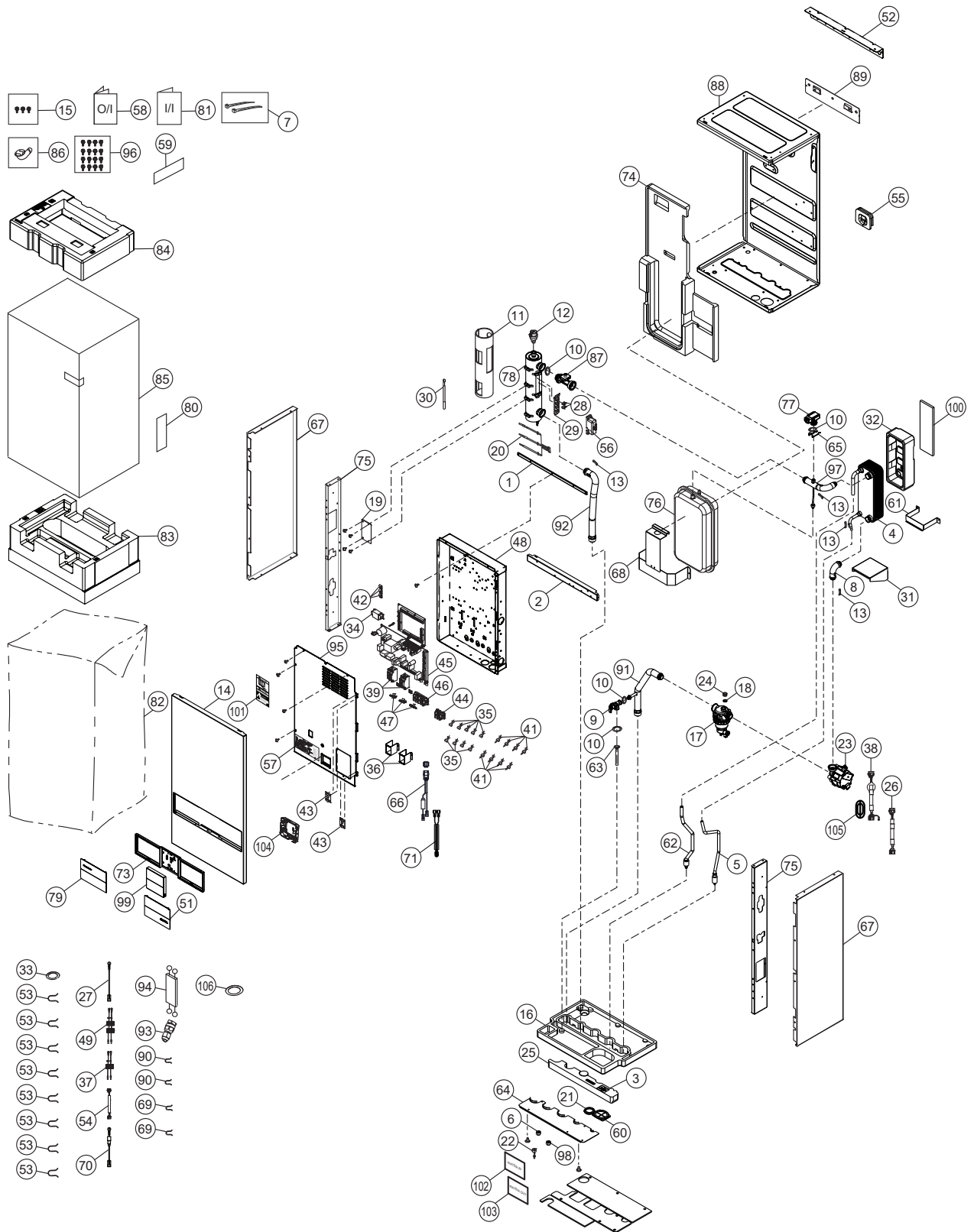


22. Exploded View and Replacement Parts List

22.1 Indoor Unit






22.1.1 WH-SDC0309K3E5






Note:

The above exploded view is for the purpose of parts disassembly and replacement.
The non-numbered parts are not kept as standard service parts.

SAFETY	REF. NO.	DESCRIPTION & NAME	QTY.	WH-SDC0309K3E5	REMARK
	1	PARTICULAR PLATE	1	D912684	
	2	PARTICULAR PLATE	1	D912685	
	3	FOAMED POLYSTYRENE	1	G071730	
	4	HOT WATER COIL - COMPLETE	1	ACXB90C02030	
		HOT WATER COIL - COMPLETE (ALFA LAVAL)		ACXB90C02040	
		HOT WATER COIL - COMPLETE (KAORI)		ACXB90C02050	
	5	TUBE ASSY - COMPLETE	1	ACXT00C44890	
	6	FLARE NUT	1	T251063	
	7	HOSE BAND	2	4090023	
	8	TUBE ASSY - COMPLETE	1	ACXT00C44940	
	9	PRESSURE RELIEF VALVE	1	ACXB62-00740	O
	10	PACKING	3	ACXB81-06820	
	11	SOUND PROOF MATERIAL	1	ACXG30-10230	
	12	AIR PURGE VALVE	1	ACXB62-00130	O
	13	PLATE SPRING	4	H711019	
	14	CABINET FRONT PLATE	1	ACXE06-05290A	
	15	ACCESSORY - COMPLETE (SCREWS)	1	ACXH82C03490	
	16	FOAMED POLYSTYRENE	1	G071795	
	17	FILTER COMPLETE	1	ACXB51C00110	O
	18	PACKING	1	ACXB81-06810	
	19	Z-SHAPED PLATE	1	D631059	
⚠	20	SENSOR - COMPLETE	1	ACXA50C15270	O
	21	PACKING	1	ACXB81-00030	
	22	FLARE NUT	1	T251064	
⚠	23	WATER PUMP	1	ACXB53-00850	O
	24	PLUG	1	ACXB82-00840	
	25	FOAMED POLYSTYRENE	1	ACXG07-07900	
⚠	26	LEAD WIRE - COMPLETE	1	ACXA60C93661	O
⚠	27	LEAD WIRE - COMPLETE	1	ACXA60C96930	O
⚠	28	THERMOSTAT	2	A151074	O
	29	U-SHAPED PIECE	1	D721031	
⚠	30	SENSOR - COMPLETE	1	ACXA50C15280	O
	31	BOX SHAPED PLATE	1	D661189	
	32	FOAMED POLYSTYRENE	1	G071691	
	33	PACKING	1	B811179	
⚠	34	PEAKING COILS (REACTOR)	1	G0C103Z00003	O
	35	SPACER	9	H54295	
	36	U-SHAPED PIECE	2	D721014	
⚠	37	LEAD WIRE - COMPLETE	1	ACXA60C96940	O
⚠	38	LEAD WIRE - COMPLETE	1	ACXA60C77950	O
⚠	39	CIRCUIT BREAKER	2	ACXA18-00010	O
	41	SPACER	8	H54294	
	42	A-PIECE	3	D77001	

SAFETY	REF. NO.	DESCRIPTION & NAME	QTY.	WH-SDC0309K3E5	REMARK
	43	HINGE	2	H611006	
	44	TERMINAL BOARD ASSY (A,B)	1	A28K1238	O
	45	ELECTRONIC CONTROLLER	1	ACXA73C96410	O
	46	TERMINAL BOARD ASSY (1,2,3)	1	A28K1217	O
	47	HOLDER - P.S. CORD	3	H31103	
	48	CONTROL BOARD ASSY	1	ACXH10-10010	
	49	LEAD WIRE - COMPLETE	1	ACXA60C98500	O
	51	DECORATION BASE ASSY (AQUAREA)	1	ACXE35K03640	
	52	INSTALLING HOLDER B	1	H361119	
	53	RETAINING RING (25.4)	8	ACXH58-00370	
	54	LEAD WIRE - COMPLETE	1	ACXA60C82910	O
	55	PACKING	1	B811177	
	56	TERMINAL COVER	1	H171051	
	57	WIRING DIAGRAM	1	ACXF29-00850	
	58	OPERATING INSTRUCTION - COMPLETE	1	ACXF55C27780	
	59	MODEL LABEL	1	ACXF87-03530	
	60	PACKING	1	ACXB81-00040	
	61	CONVEX PLATE	1	ACXD65-00040	
	62	TUBE ASSY - COMPLETE	1	ACXT00C44950	
	63	TUBE ASSY	1	T030522	
	64	FLAT PLATE	1	ACXD64-01680	
	65	WIRE SPRING	1	ACXH72-00341	
	66	LEAD WIRE - COMPLETE	1	ACXA60C96900	O
	67	CABINET SIDE PLATE	2	ACXE04-13580A	
	68	PARTICULAR PLATE - ASSY	1	ACXD90K02450	
	69	RETAINING RING (12.7)	2	H581007	
	70	LEAD WIRE - COMPLETE	1	ACXA60C96910	O
	71	LEAD WIRE - COMPLETE	1	ACXA60C96920	O
	73	BOX SHAPED PLATE	1	ACXD66-03970	
	74	FOAMED POLYSTYRENE	1	ACXG07-06070	
	75	CONNECTING BAR	2	E261330	
	76	RECEIVER	1	ACXB14-00720	
	77	PRESSURE SENSOR	1	ACXB62-01110	O
	78	HEATER ASSY	1	ACXA34K00070	
	79	DECORATION BASE ASSY (PANASONIC)	1	ACXE35K03630	
	80	NAME PLATE	1	ACXF09-08810	
	81	INSTALLATION INSTRUCTION COMPLETE	1	ACXF60C19960	
	82	BAG (UNIT)	1	ACXG86-04152	
	83	BASE BOARD - COMPLETE	1	ACXG62C02920	
	84	SHOCK ABSORBER	1	ACXG70-15470	
	85	C.C. CASE	1	ACXG50-47955	
	86	BAG - COMPLETE (FLEXIBLE PIPE)	1	G87C900	
	87	FLOW SWITCH	1	ACXB62-00931	O

SAFETY	REF. NO.	DESCRIPTION & NAME	QTY.	WH-SDC0309K3E5	REMARK
	88	BASE PAN COMPLETE	1	D521450CZ	
	89	INSTALLING HOLDER	1	H361103CZ	
	90	RETAINING RING (14-23)	2	H581038	
	91	TUBE ASSY - COMPLETE	1	ACXT00C44980	
	92	TUBE ASSY - COMPLETE	1	ACXT00C45000	
	93	SOCKET COMPLETE	1	T27C1008	
	94	LEAD WIRE - COMPLETE	1	ACXA60C96950	O
	95	CONTROL BOARD COVER	1	ACXH13-09380	
	96	SCREW - COMPLETE	16	H551198	
	97	TUBE ASSY - COMPLETE	1	ACXT00C45040	
	98	FLARE NUT	1	T251079	
	99	REMOTE CONTROL SWITCH - COMPLETE	1	ACXA75C23211	O
	100	RUBBER (DECO)	1	ACXB81-07400	
	101	CAUTION LABEL	1	ACXF75-15160	
	102	WATER IN	1	ACXF71-22770	
	103	WATER OUT	1	ACXF71-22780	
	104	BOX SHAPED PLATE	1	ACXD66-03961	
	105	V-COIL	1	A431122	O
	106	PACKING	1	ACXB81-06910	

Note:

- All parts are supplied from PHVACCZ, Czech (Vendor Code: 00029407).
- "O" marked parts are recommended to be kept in stock.