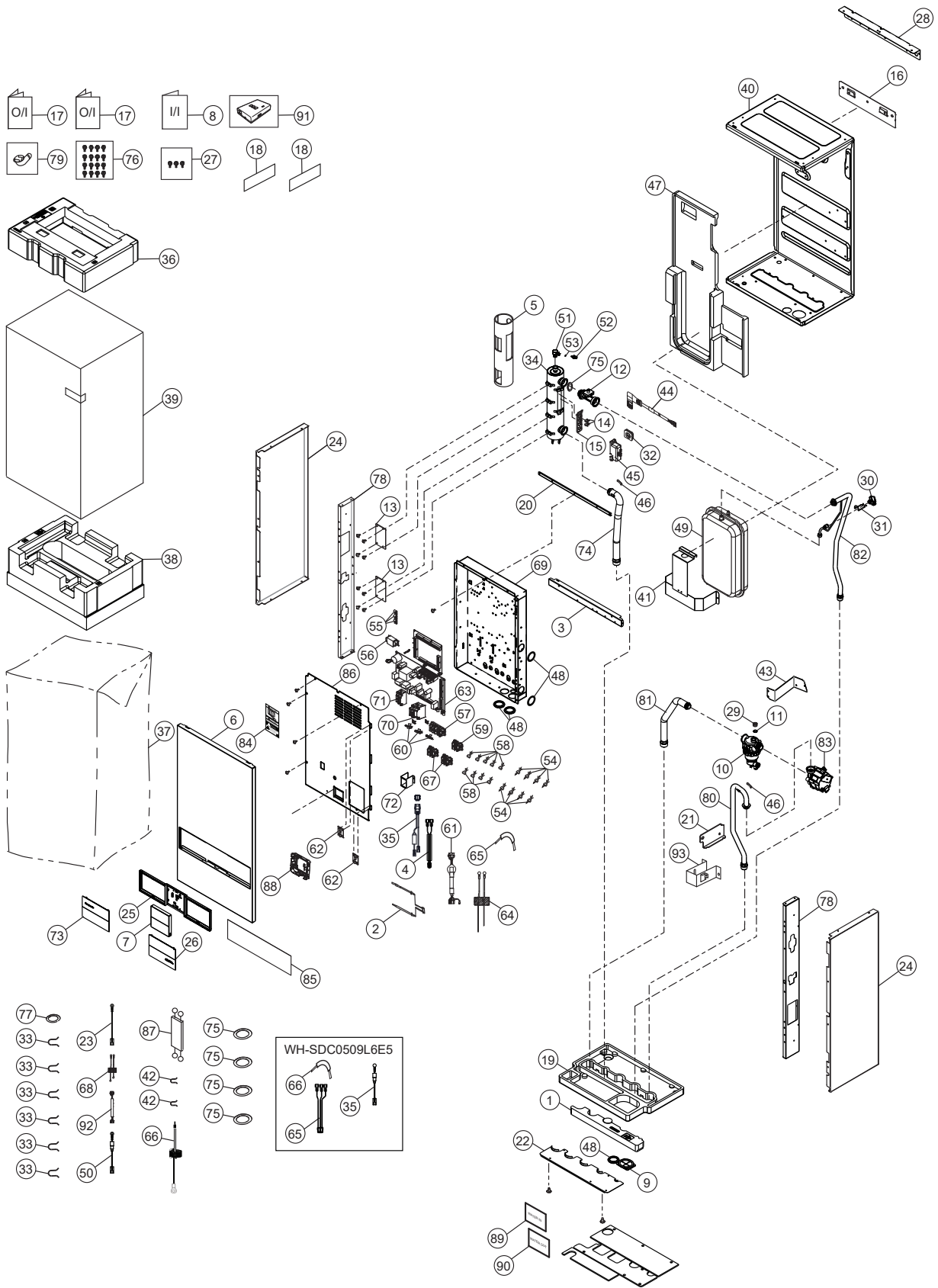


21. Exploded View and Replacement Parts List



21.1 Indoor Unit



Note:
 The above exploded view is for the purpose of parts disassembly and replacement.
 The non-numbered parts are not kept as standard service parts.

SAFETY	REF. NO.	DESCRIPTION & NAME	QTY.	WH-SDC0509L3E5	WH-SDC0509L6E5	REMARK
	1	FOAMED POLYSTYRENE	1	ACXG07-08060	←	
	2	SENSOR - COMPLETE	1	ACXA50C19310	←	
	3	PARTICULAR PLATE	1	D912685	←	
	4	LEAD WIRE - COMPLETE	1	ACXA60C96920	←	
	5	SOUND PROOF MATERIAL	1	ACXG30-10230	←	
	6	CABINET FRONT PLATE	1	ACXE06-05290A	←	
	7	REMOTE CONTROL SWITCH - COMPLETE	1	ACXA75C23211	←	
	8	INSTALLATION INSTRUCTION COMPLETE	1	ACXF60C20020	←	
	9	PACKING	1	ACXB81-00040	←	O
	10	FILTER COMPLETE	1	ACXB51C00110	←	
	11	PACKING	1	ACXB81-06810	←	
	12	FLOW SENSOR	1	ACXB62-00912	←	O
	13	Z-SHAPED PLATE	2	D631059	←	
	14	THERMOSTAT	2	ACXA15-00260	←	
	15	U-SHAPED PIECE	1	D721031	←	
	16	INSTALLING HOLDER A	1	H361103CZ	←	
	17	OPERATING INSTRUCTION - COMPLETE	1	ACXF55C27960	ACXF55C27970	
	18	MODEL LABEL	1	ACXF87-04880	ACXF87-04890	
	19	FOAMED POLYSTYRENE	1	G071795	←	
	20	PARTICULAR PLATE	1	D912684	←	
	21	L-PIECE	1	ACXD70-02350	←	
	22	FLAT PLATE	1	ACXD64-01690	←	
	23	LEAD WIRE - COMPLETE	1	ACXA60C96930	←	
	24	CABINET SIDE PLATE	2	ACXE04-13580A	←	
	25	BOX SHAPED PLATE	1	ACXD66-03970	←	
	26	DECORATION BASE ASSY (AQUAREA)	1	ACXE35K03640	←	
	27	ACCESSORY - COMPLETE (SCREWS)	1	ACXH82C03490	←	
	28	INSTALLING HOLDER B	1	H361119	←	
	29	PLUG	1	ACXB82-00840	←	
	30	PRESSURE SENSOR	1	ACXB62-01110	←	
	31	WIRE SPRING	1	ACXH72-00341	←	
	32	PACKING	1	B811177	←	
	33	RETAINING RING (25.4)	6	ACXH58-00370	←	
	34	HEATER ASSY	1	ACXA34K00070	ACXA34K00430	
	35	LEAD WIRE - COMPLETE	1	ACXA60C96900	A68C1437	
	36	SHOCK ABSORBER	1	ACXG70-15470	←	
	37	BAG (UNIT)	1	ACXG86-04152	←	
	38	BASE BOARD - COMPLETE	1	ACXG62C02920	←	
	39	C.C. CASE	1	ACXG50-47955	←	
	40	BASE PAN COMPLETE	1	D521450CZ	←	
	41	PARTICULAR PLATE - ASSY	1	ACXD90K02450	←	
	42	RETAINING RING (14-23)	2	H581038	←	
	43	Z-SHAPED PLATE	1	ACXD63-01460	←	

SAFETY	REF. NO.	DESCRIPTION & NAME	QTY.	WH-SDC0509L3E5	WH-SDC0509L6E5	REMARK
	44	LEAD WIRE - COMPLETE	1	A68C2281	←	
	45	TERMINAL COVER	1	H171051	←	
	46	PLATE SPRING	2	H711019	←	
	47	FOAMED POLYSTYRENE	1	ACXG07-06070	←	
	48	PACKING	5	ACXB81-00030	←	
	49	RECEIVER	1	ACXB14-00720	←	
⚠	50	LEAD WIRE - COMPLETE	1	ACXA60C96910	←	
	51	VALVE BODY - COMPLETE	1	ACXB62C01130	←	
	52	PLUG	1	ACXB82-00860	←	
	53	PACKING	1	ACXB81-00020	←	
	54	SPACER	8	H54294	←	
	55	A-PIECE	3	D77001	←	
⚠	56	PEAKING COILS	1	G0C103Z00003	←	
⚠	57	TERMINAL BOARD ASSY	1	A28K1217	←	
	58	SPACER	9	H54295	←	
⚠	59	TERMINAL BOARD ASSY	1	A28K1238	←	
	60	HOLDER - P.S. CORD	3	H31103	←	
⚠	61	LEAD WIRE - COMPLETE	1	ACXA60C77950	←	
	62	HINGE	2	H611006	←	
⚠	63	ELECTRONIC CONTROLLER	1	ACXA73C95310	ACXA73C95320	
⚠	64	LEAD WIRE - COMPLETE	1	ACXA60C98890	←	
⚠	65	LEAD WIRE - COMPLETE	1	ACXA60C98860	ACXA60C97520	
⚠	66	LEAD WIRE - COMPLETE	1	ACXA60C98870	ACXA60C98880	
⚠	67	TERMINAL BOARD ASSY	2	A28K1200	←	
⚠	68	LEAD WIRE - COMPLETE	1	ACXA60C98850	←	
	69	CONTROL BOARD ASSY	1	ACXH10-10011	←	
	70	CIRCUIT BREAKER	1	ACXA18-00011	←	
⚠	71	RESIDUAL CURRENT OPR. CIRCUIT - BREAKERS	1	K5KYYAY00003	←	
	72	U-SHAPED PIECE	1	D721014	←	
	73	DECORATION BASE ASSY (PANASONIC)	1	ACXE35K03630	←	
	74	TUBE ASSY - COMPLETE	1	ACXT00C45000	←	
	75	PACKING	5	ACXB81-06910	←	
	76	SCREW - COMPLETE	16	H551198	←	
	77	PACKING	1	B811179	←	
	78	CONNECTING BAR	2	ACXE26-03080	←	
	79	BAG - COMPLETE	1	G87C900	←	
	80	TUBE ASSY - COMPLETE	1	ACXT00C45131	←	
	81	TUBE ASSY - COMPLETE	1	ACXT00C45150	←	
	82	TUBE ASSY - COMPLETE	1	ACXT00C45170	←	
⚠	83	PUMP	1	ACXB53-00850	←	
	84	CAUTION LABEL	1	ACXF75-15160	←	
	85	RUBBER (DECO)	1	ACXB81-07400	←	

SAFETY	REF. NO.	DESCRIPTION & NAME	QTY.	WH-SDC0509L3E5	WH-SDC0509L6E5	REMARK
	86	CONTROL BOARD COVER	1	ACXH13-09380	←	
	87	LEAD WIRE - COMPLETE	1	ACXA60C96950	←	
	88	BOX SHAPED PLATE	1	ACXD66-03961	←	
	89	WATER IN	1	ACXF71-22770	←	
	90	WATER OUT	1	ACXF71-22780	←	
	91	NETWORK ADAPTOR - COMPLETE	1	ACXA75C23080-1	←	
	92	LEAD WIRE - COMPLETE	1	ACXA60C99130	←	
	93	CONVEY PIECE	1	ACXD75-00650	←	

Note:

- All parts are supplied from PHVACCZ, Czech (Vendor Code: 00029407).
- "O" marked parts are recommended to be kept in stock.