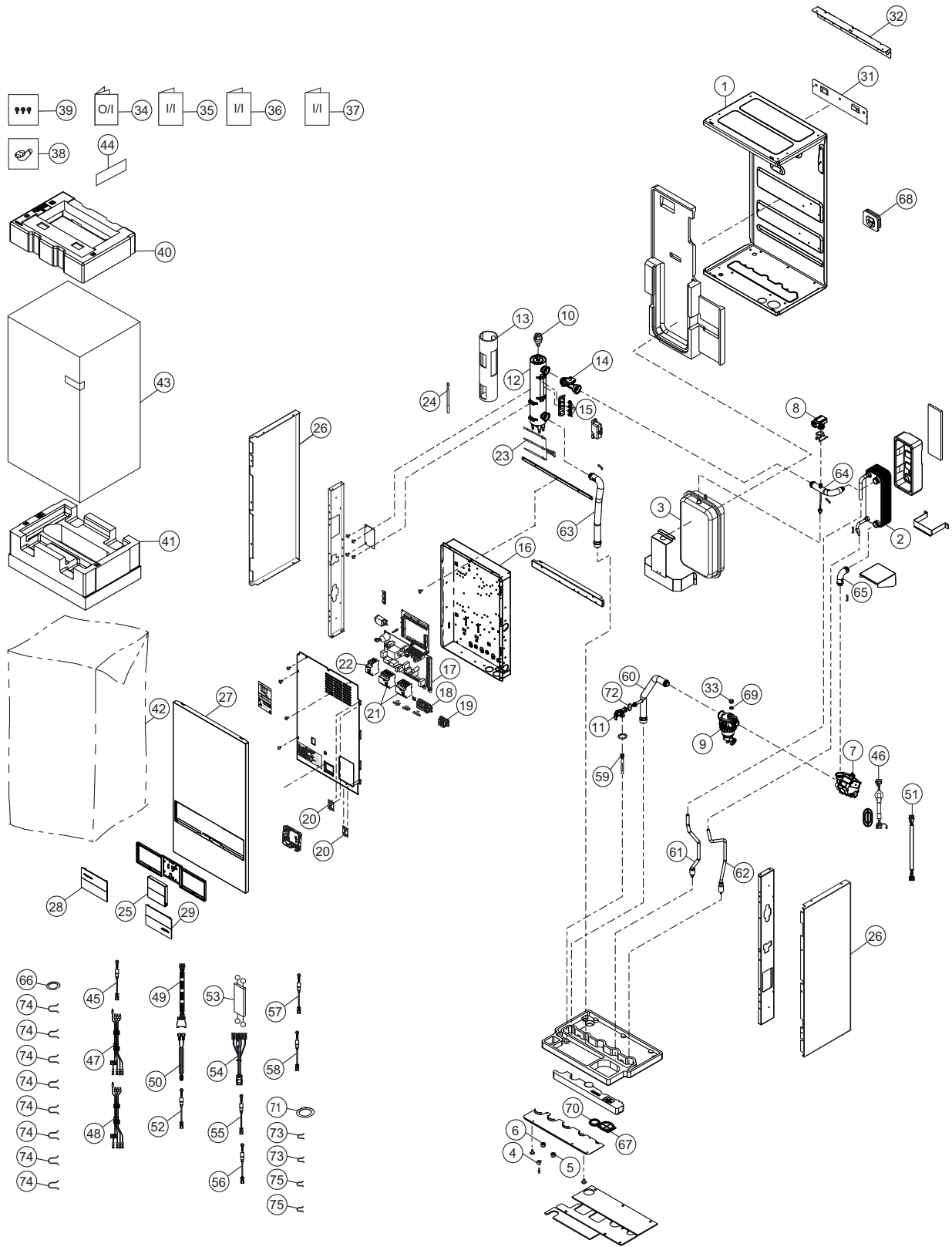


# 21. Exploded View and Replacement Parts List

## 21.1 Indoor Unit

### 21.1.1 WH-SDC09K3E8 WH-SDC09K9E8



**Note:**

The above exploded view is for the purpose of parts disassembly and replacement. The non-numbered parts are not kept as standard service parts.

SAFETY	REF. NO.	DESCRIPTION & NAME	QTY.	WH-SDC09K3E8	WH-SDC09K9E8	REMARK
	1	BASE PAN	1	D521450CZ	←	
	2	HOT WATER COIL-COMplete	1	ACXB90C01750	←	
	3	RECEIVER	1	ACXB14-00720	←	
	4	FLARE NUT (1/2)	1	T251032	←	
	5	FLARE NUT (5/8)	1	T251079	←	
	6	FLARE NUT (1/4)	1	T251063	←	
	7	WATER PUMP	1	ACXB53-00850	←	
	8	VALVE BODY - BOILER PRESS. TRANSDUCER	1	ACXB62-01110	←	
	9	FILTER COMPLETE	1	ACXB51C00110	←	
	10	AIR PURGE VALVE	1	ACXB62-00130	←	
	11	VALVE BODY - PRESSURE RELIEF VALVE	1	ACXB62-00740	←	
	12	HEATER ASS'Y	1	ACXA34K00440	ACXA34K00090	
	13	SOUND PROOF MATERIAL	1	ACXG30-10230	←	
	14	FLOW SENSOR	1	ACXB62-00932	←	
	15	THERMOSTAT	4	A151074	←	
	16	CONTROL BOARD	1	ACXH10-10011	←	
	17	ELECTRONIC CONTROLLER-MAIN	1	ACXA74C01830	ACXA74C01840	
	18	TERMINAL BOARD ASS'Y (1 TO 5)	1	A28K1240	←	
	19	TERMINAL BOARD ASS'Y ( A,B )	1	A28K1260	A28K1238	
	20	HINGE	2	H611006	←	
	21	RESIDUAL CURRENT CIRCUIT BREAKER	1 / 2	ACXA18-00021	←	
	22	RESIDUAL CURRENT CIRCUIT BREAKER	1	ACXA18-00011	-	
	23	SENSOR-CO.(WATER IN,OUT REF TEMP)	1	ACXA50C15270	←	
	24	SENSOR-CO.(HEX WATER OUTLET)	1	ACXA50C15280	←	
	25	REMOTE CONTROL COMPLETE	1	ACXA75C23211	←	
	26	CABINET SIDE PLATE	2	ACXE04-13580A	←	
	27	CABINET FRONT PLATE	1	ACXE06-05290A	←	
	28	DECORATION BASE ASS'Y	1	ACXE35K03630	←	
	29	DECORATION BASE ASSY (AQUAREA)	1	ACXE35K03640	←	
	31	INSTALLING HOLDER A	1	H361103CZ	←	
	32	INSTALLING HOLDER B	1	H361119	←	
	33	PLUG	1	ACXB82-00840	←	
	34	OPERATING INSTRUCTION	1	ACXF55-38570	←	
	35	INSTALLATION INSTRUCTION	1	ACXF60C20410	←	
	36	INSTALLATION INSTRUCTION	1	ACXF60-54200	←	
	37	INSTALLATION INSTRUCTION	1	ACXF60-54210	←	
	38	BAG-COMplete (FLEXIBLE PIPE)	1	G87C900	←	
	39	ACCESSORY-COMplete (SCREWS)	1	ACXH82C03490	←	
	40	SHOCK ABSORBER	1	ACXG70-15470	←	
	41	BASE BOARD-COMplete	1	ACXG62C02920	←	
	42	BAG	1	ACXG86-04152	←	
	43	C.C.CASE	1	ACXG50-47955	←	
	44	MODEL LABEL	1	ACXF87-25690	ACXF87-25700	
	45	LEAD WIRE-CO.(HEATER-HEAT1)	1	A68C1437	←	
	46	LEAD WIRE-CO.(WIRE3)	1	ACXA60C77950	←	
	47	LEAD WIRE-CO.(WIRE2)	1	-	ACXA61C00441	
	48	LEAD WIRE-CO.(WIRE1)	1	ACXA61C00501	ACXA60C97610	

SAFETY	REF. NO.	DESCRIPTION & NAME	QTY.	WH-SDC09K3E8	WH-SDC09K9E8	REMARK
	49	LEAD WIRE-CO.(VB03-FLWSEN)	1	ACXA61C00350	←	
	50	LEAD WIRE-CO.(CN-OLP1)	1	ACXA60C96920	←	
	51	LEAD WIRE-CO.(PRESSENS-CN-DPS)	1	ACXA60C93661	←	
	52	LEAD WIRE-CO.(HEATER-HEAT2)	1	A68C1438	←	
	53	LEAD WIRE-CO.(REMOTE-CN4)	1	ACXA60C96950	←	
	54	LEAD WIRE-CO.(HEATER-CON)	1	ACXA60C98950	←	
	55	LEAD WIRE-CO.(HEATER3-A)	1	ACXA60C98960	←	
	56	LEAD WIRE-CO.(HEATER1-A)	1	ACXA60C98970	←	
	57	LEAD WIRE-CO.(HEATER2-A)	1	ACXA60C98970	←	
	58	LEAD WIRE-CO.(HEATER-B)	1	ACXA60C97671	ACXA60C98981	
	59	TUBE ASSY	1	T030522	←	
	60	TUBE ASSY-COMPLETE	1	ACXT00C47720	←	
	61	TUBE ASSY-COMPLETE	1	ACXT00C45740	←	
	62	TUBE ASSY-COMPLETE	1	ACXT00C48500	←	
	63	TUBE ASSY-COMPLETE	1	ACXT00C45000	←	
	64	TUBE ASSY-COMPLETE	1	ACXT00C45040	←	
	65	TUBE ASSY-COMPLETE	1	ACXT00C44940	←	
	66	PACKING (O-RING)	1	B811179	←	
	67	PACKING (O-RING)	1	ACXB81-00040	←	
	68	PACKING (O-RING)	1	B811177	←	
	69	PACKING (O-RING)	1	ACXB81-06810	←	
	70	PACKING (O-RING)	1	ACXB81-00030	←	
	71	PACKING (O-RING)	1	ACXB81-06910	←	
	72	PACKING (O-RING)	1	ACXB81-06820	←	
	73	RETAINING RING(12.7)	2	H581007	←	
	74	RETAINING RING(25.4)	8	ACXH58-00370	←	
	75	RETAINING RING(14-23)	2	H581038	←	

**Note:**

- All parts are supplied from PHVACCZ, Czech (Vendor Code: 00029407).
- "O" marked parts are recommended to be kept in stock.