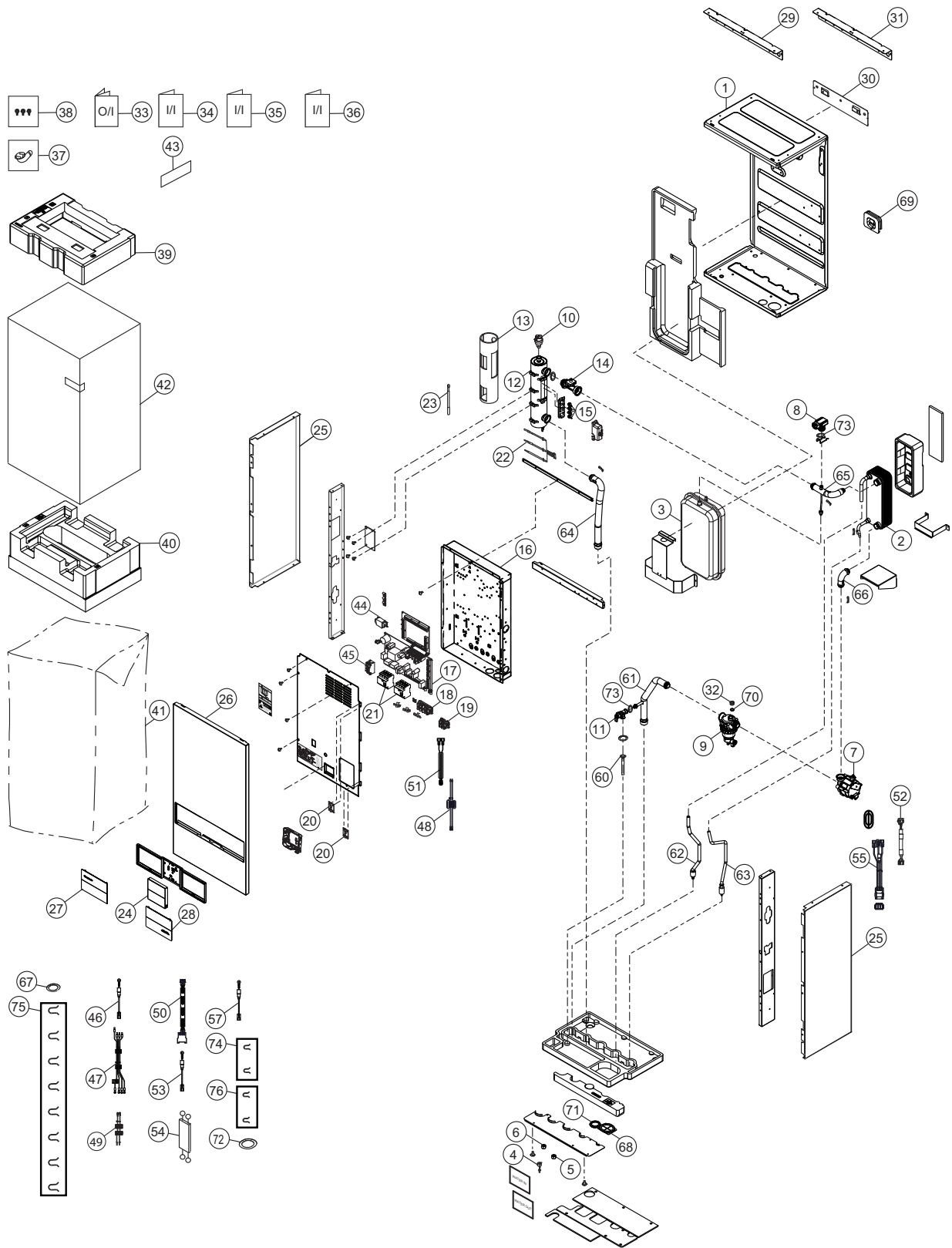


# 21. Exploded View and Replacement Parts List

## 21.1 Indoor Unit



**Note:**  
The above exploded view is for the purpose of parts disassembly and replacement.  
The non-numbered parts are not kept as standard service parts.

SAFETY	REF. NO.	DESCRIPTION & NAME	QTY.	WH-SDC12K6E5	REMARK
	1	BASE PAN	1	D521450CZ	
	2	HOT WATER COIL-COMPLETE	1	ACXB90C01750	
	3	RECEIVER	1	ACXB14-00720	
	4	FLARE NUT (1/2)	1	T251032	
	5	FLARE NUT (5/8)	1	T251079	
	6	FLARE NUT (1/4)	1	T251063	
	7	WATER PUMP	1	ACXB53-00850	
	8	VALVE BODY - BOILER PRESS. TRANSDUCER	1	ACXB62-01110	
	9	FILTER COMPLETE	1	ACXB51C00110	
	10	AIR PURGE VALVE	1	ACXB62-00130	
	11	VALVE BODY - PRESSURE RELIEF VALVE	1	ACXB62-00740	
	12	HEATER ASS'Y	1	ACXA34K00430	
	13	SOUND PROOF MATERIAL	1	ACXG30-10230	
	14	FLOW SENSOR	1	ACXB62-00932	
	15	THERMOSTAT	4	A151074	
	16	CONTROL BOARD	1	ACXH10-10011	
	17	ELECTRONIC CONTROLLER-MAIN	1	ACXA74C01820	
	18	TERMINAL BOARD ASS'Y (1 TO 5)	1	A28K1217	
	19	TERMINAL BOARD ASS'Y ( A,B )	1	A28K1238	
	20	HINGE	2	H611006	
	21	RESIDUAL CURRENT CIRCUIT BREAKER	2	ACXA18-00011	
	22	SENSOR-CO.(WATER IN,OUT REF TEMP)	1	ACXA50C15270	
	23	SENSOR-CO.(HEX WATER OUTLET)	1	ACXA50C15280	
	24	REMOTE CONTROL COMPLETE	1	ACXA75C23211	
	25	CABINET SIDE PLATE	2	ACXE04-13580A	
	26	CABINET FRONT PLATE	1	ACXE06-05290A	
	27	DECORATION BASE ASS'Y	1	ACXE35K03630	
	28	DECORATION BASE ASSY (AQUAREA)	1	ACXE35K03640	
	29	INSTALLING HOLDER	1	H361119	
	30	INSTALLING HOLDER A	1	H361103CZ	
	31	INSTALLING HOLDER B	1	H361119	
	32	PLUG	1	ACXB82-00840	
	33	OPERATING INSTRUCTION	1	ACXF55-38560	
	34	INSTALLATION INSTRUCTION	1	ACXF60C20400	
	35	INSTALLATION INSTRUCTION	1	ACXF60-54180	
	36	INSTALLATION INSTRUCTION	1	ACXF60-54190	
	37	BAG-COMPLETE (FLEXIBLE PIPE)	1	G87C900	
	38	ACCESSORY-COMPLETE (SCREWS)	1	ACXH82C03490	
	39	SHOCK ABSORBER	1	ACXG70-15470	
	40	BASE BOARD-COMPLETE	1	ACXG62C02920	
	41	BAG	1	ACXG86-04152	
	42	C.C.CASE	1	ACXG50-47955	
	43	MODEL LABEL	1	ACXF87-25680	
	44	PEAKING COILS	1	G0C103Z00003	
	45	CIRCUIT BREAKER	1	K5KYYAY00003	
	46	LEAD WIRE-CO.(HEATER-HEAT1)	1	A68C1437	
	47	LEAD WIRE-CO.(WIRE3)	1	ACXA60C77950	
	48	LEAD WIRE-CO.(WIRE2)	1	ACXA60C98590	
	49	LEAD WIRE-CO.(WIRE1)	1	ACXA60C98600	
	50	LEAD WIRE-CO.(VB03-FLWSEN)	1	ACXA61C00350	

SAFETY	REF. NO.	DESCRIPTION & NAME	QTY.	WH-SDC12K6E5	REMARK
	51	LEAD WIRE-CO.(CN-OLP1)	1	ACXA60C96920	
	52	LEAD WIRE-CO.(PRESSENS-CN-DPS)	1	ACXA60C93661	
	53	LEAD WIRE-CO.(HEATER-A)	1	ACXA60C96930	
	54	LEAD WIRE-CO.(REMOTE-CN4)	1	ACXA60C96950	
	55	LEAD WIRE-CO.(HEATER-CON)	1	ACXA60C97520	
	56	LEAD WIRE-CO.(HEATER3-A)	1	-	
	57	LEAD WIRE-CO.(HEATER1-B)	1	ACXA60C96910	
	58	LEAD WIRE-CO.(HEATER2-A)	1	-	
	59	LEAD WIRE-CO.(HEATER-B)	1	-	
	60	TUBE ASSY	1	T030522	
	61	TUBE ASSY-COMPLETE	1	ACXT00C47720	
	62	TUBE ASSY-COMPLETE	1	ACXT00C45740	
	63	TUBE ASSY-COMPLETE	1	ACXT00C48500	
	64	TUBE ASSY-COMPLETE	1	ACXT00C45000	
	65	TUBE ASSY-COMPLETE	1	ACXT00C45040	
	66	TUBE ASSY-COMPLETE	1	ACXT00C44940	
	67	PACKING (O-RING)	1	B811179	
	68	PACKING (O-RING)	1	ACXB81-00040	
	69	PACKING (O-RING)	1	B811177	
	70	PACKING (O-RING)	1	ACXB81-06810	
	71	PACKING (O-RING)	1	ACXB81-00030	
	72	PACKING (O-RING)	1	ACXB81-06910	
	73	PACKING (O-RING)	2	ACXB81-06820	
	74	RETAINING RING(12.7)	2	H581007	
	75	RETAINING RING(25.4)	8	ACXH58-00370	
	76	RETAINING RING(14-23)	2	H581038	

**Note:**

- All parts are supplied from PHVACCZ, Czech (Vendor Code: 00029407).
- "O" marked parts are recommended to be kept in stock.