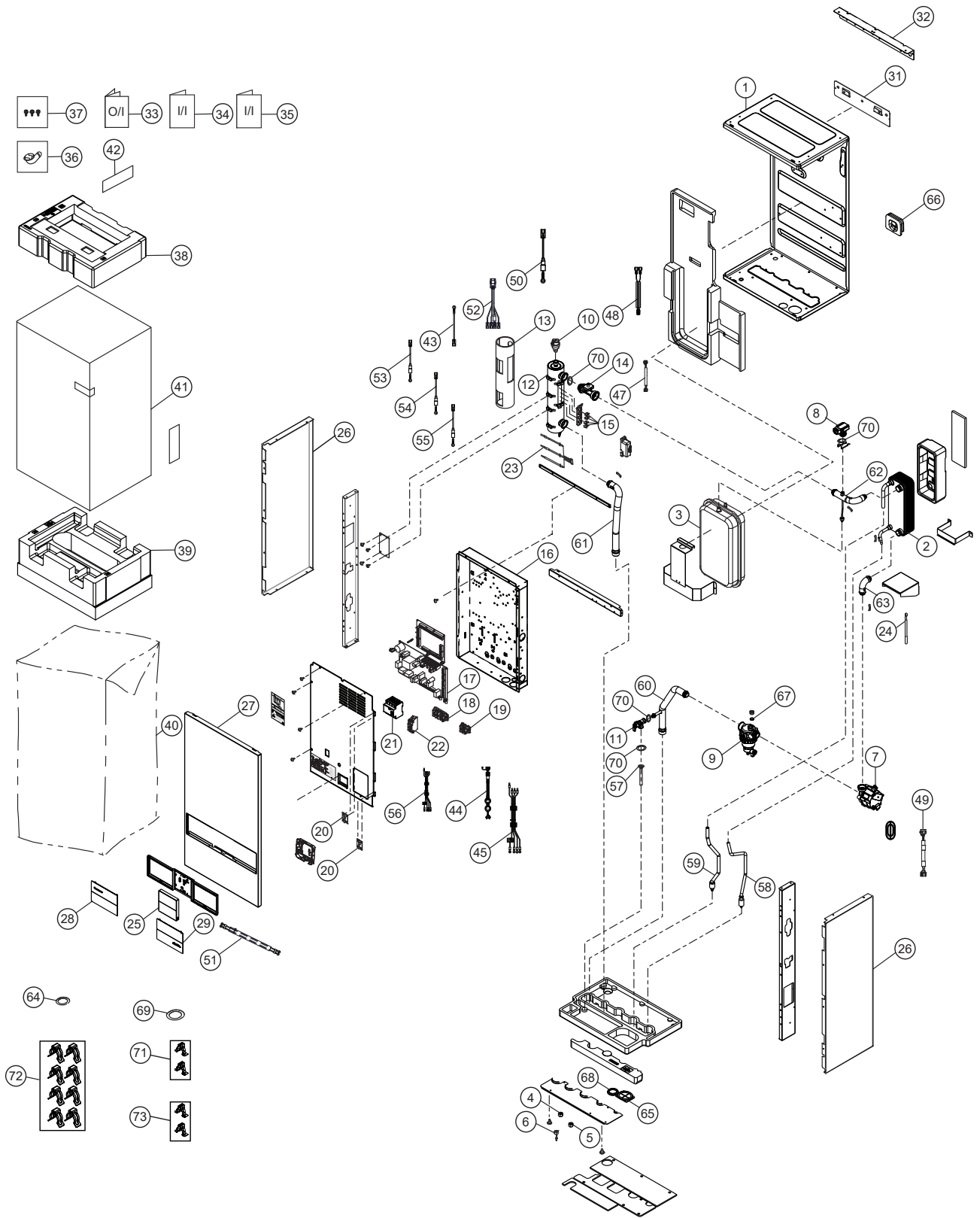


21. Exploded View and Replacement Parts List

21.1 Indoor Unit

21.1.1 WH-SXC09K3E8



Note:

The above exploded view is for the purpose of parts disassembly and replacement. The non-numbered parts are not kept as standard service parts.

SAFETY	REF. NO.	DESCRIPTION & NAME	QTY.	WH-SXC09K3E8	REMARK
	1	BASE PAN	1	D521450CZ	
	2	HOT WATER COIL - COMPLETE	1	ACXB90C01750	
	3	RECEIVER	1	ACXB14-00720	
	4	FLARE NUT (1/2)	1	T251032	
	5	FLARE NUT (5/8)	1	T251079	
	6	FLARE NUT (1/4)	1	T251063	
	7	WATER PUMP	1	ACXB53-00850	
	8	PRESSURE SENSOR	1	ACXB62-01110	
	9	FILTER COMPLETE	1	ACXB51C00110	O
	10	AIR PURGE VALVE	1	ACXB62-00130	O
	11	PRESSURE RELIEF VALVE	1	ACXB62-00740	O
	12	HEATER ASS'Y	1	ACXA34K00440	
	13	SOUND PROOF MATERIAL	1	ACXG30-10230	
	14	FLOW SWITCH	1	ACXB62-00932	O
	15	THERMOSTAT	4	A151074	
	16	CONTROL BOARD	1	ACXH10-10011	
	17	ELECTRONIC CONTROLLER - MAIN	1	ACXA73C97420	O
	18	TERMINAL BOARD ASS'Y (1 TO 5)	1	A28K1240	O
	19	TERMINAL BOARD ASS'Y (A, B)	1	A28K1260	O
	20	HINGE	2	H611006	
	21	RESIDUAL CURRENT CIRCUIT BREAKER	1	ACXA18-00021	
	22	RESIDUAL CURRENT CIRCUIT BREAKER	1	ACXA18-00011	
	23	SENSOR - CO. (WATER IN, OUT REF TEMP)	1	ACXA50C15270	O
	24	SENSOR - CO. (HEX WATER OUTLET)	1	ACXA50C15280	O
	25	REMOTE CONTROL COMPLETE	1	ACXA75C23211	
	26	CABINET SIDE PLATE	2	ACXE04-13580A	
	27	CABINET FRONT PLATE	1	ACXE06-05290A	
	28	DECORATION BASE ASS'Y	1	ACXE35K03630	
	29	DECORATION BASE ASSY (AQUAREA)	1	ACXE35K03640	
	31	INSTALLING HOLDER A	1	H361103CZ	
	32	INSTALLING HOLDER B	1	H361119	
	33	OPERATING INSTRUCTION	1	ACXF55-37110	
	34	INSTALLATION INSTRUCTION	1	ACXF60-52010	
	35	INSTALLATION INSTRUCTION	1	ACXF60-52950	
	36	BAG - COMPLETE (FLEXIBLE PIPE)	1	G87C900	
	37	ACCESSORY - COMPLETE (SCREWS)	1	ACXH82C03490	
	38	SHOCK ABSORBER	1	ACXG70-15470	
	39	BASE BOARD - COMPLETE	1	ACXG62C02920	
	40	BAG	1	ACXG86-04152	
	41	C.C. CASE	1	ACXG50-47955	
	42	MODEL LABEL	1	ACXF87-09070	

SAFETY	REF. NO.	DESCRIPTION & NAME	QTY.	WH-SXC09K3E8	REMARK
	43	LEAD WIRE - CO. (HEATER - HEAT1)	1	A68C1437	O
	44	LEAD WIRE - CO. (WIRE3)	1	ACXA60C77950	O
	45	LEAD WIRE - CO. (WIRE2)	1	ACXA61C00501	O
	46	LEAD WIRE - CO. (WIRE1)	1	-	O
	47	LEAD WIRE - CO. (VB03 - FLWSEN)	1	ACXA60C82910	O
	48	LEAD WIRE - CO. (CN-OLP1)	1	ACXA60C96920	O
	49	LEAD WIRE - CO. (PRESSENS - CN-DPS)	1	ACXA60C93661	O
	50	LEAD WIRE - CO. (HEATER - HEAT2)	1	A68C1438	O
	51	LEAD WIRE - CO. (REMOTE - CN4)	1	ACXA60C96950	O
	52	LEAD WIRE - CO. (HEATER - CON)	1	ACXA60C98950	O
	53	LEAD WIRE - CO. (HEATER3 - A)	1	ACXA60C98960	O
	54	LEAD WIRE - CO. (HEATER1 - A)	1	ACXA60C98970	O
	55	LEAD WIRE - CO. (HEATER2 - A)	1	ACXA60C98970	O
	56	LEAD WIRE - CO. (HEATER - B)	1	ACXA60C97671	O
	57	TUBE ASSY	1	T030522	
	58	TUBE ASSY - COMPLETE	1	ACXT00C44890	
	59	TUBE ASSY - COMPLETE	1	ACXT00C45740	
	60	TUBE ASSY - COMPLETE	1	ACXT00C44980	
	61	TUBE ASSY - COMPLETE	1	ACXT00C45000	
	62	TUBE ASSY - COMPLETE	1	ACXT00C45040	
	63	TUBE ASSY - COMPLETE	1	ACXT00C44940	
	64	PACKING (O-RING)	1	B811179	
	65	PACKING (O-RING)	1	ACXB81-00040	
	66	PACKING (O-RING)	1	B811177	
	67	PACKING (O-RING)	1	ACXB81-06810	
	68	PACKING (O-RING)	1	ACXB81-00030	
	69	PACKING (O-RING)	1	ACXB81-06910	
	70	PACKING (O-RING)	2	ACXB81-06820	
	71	RETAINING RING (12.7)	2	H581007	
	72	RETAINING RING (25.4)	8	ACXH58-00370	
	73	RETAINING RING (14-23)	2	H581038	

Note:

- All parts are supplied from PAPAMY, Malaysia (Vendor Code: 00029488).
- "O" marked parts are recommended to be kept in stock.