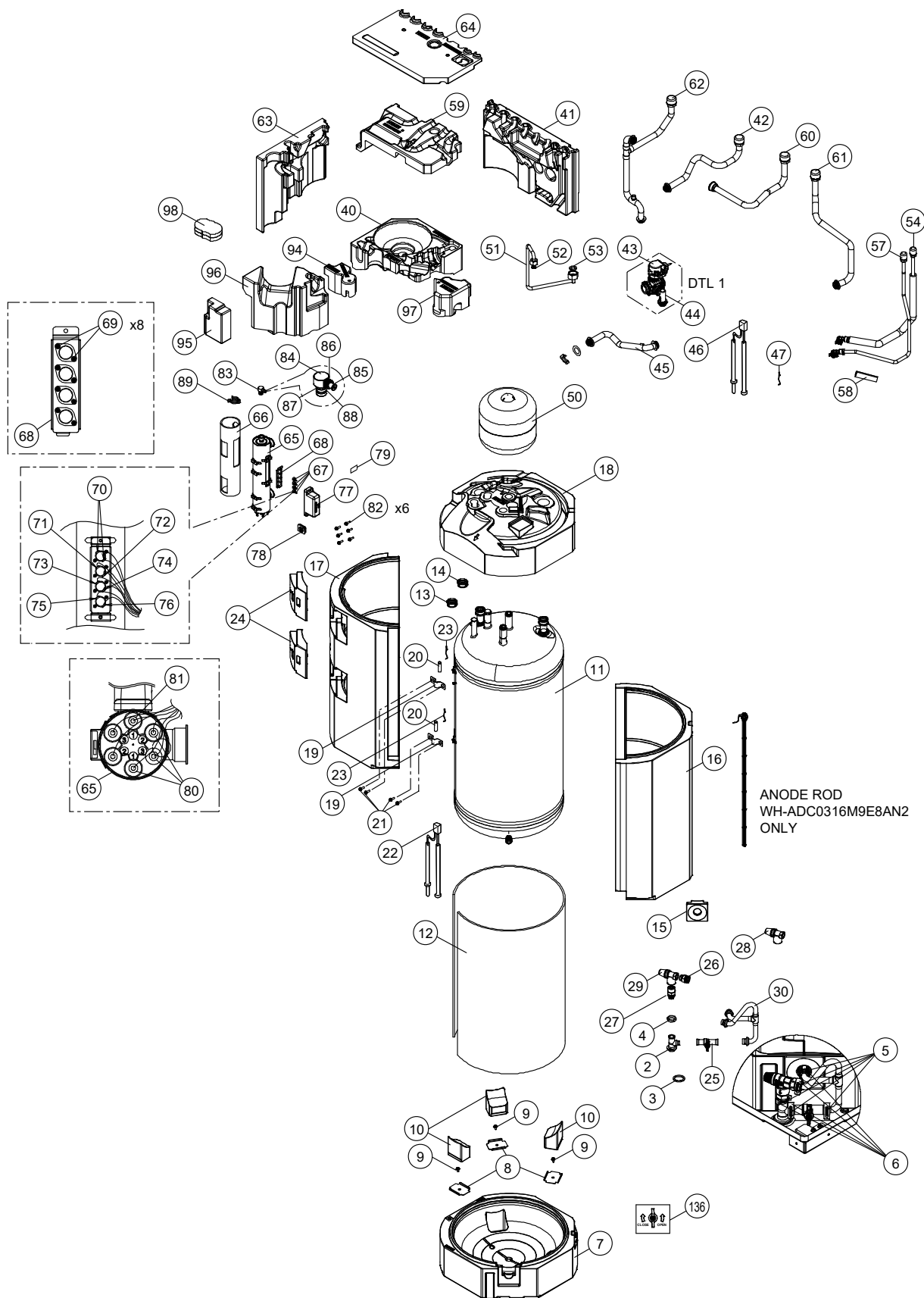
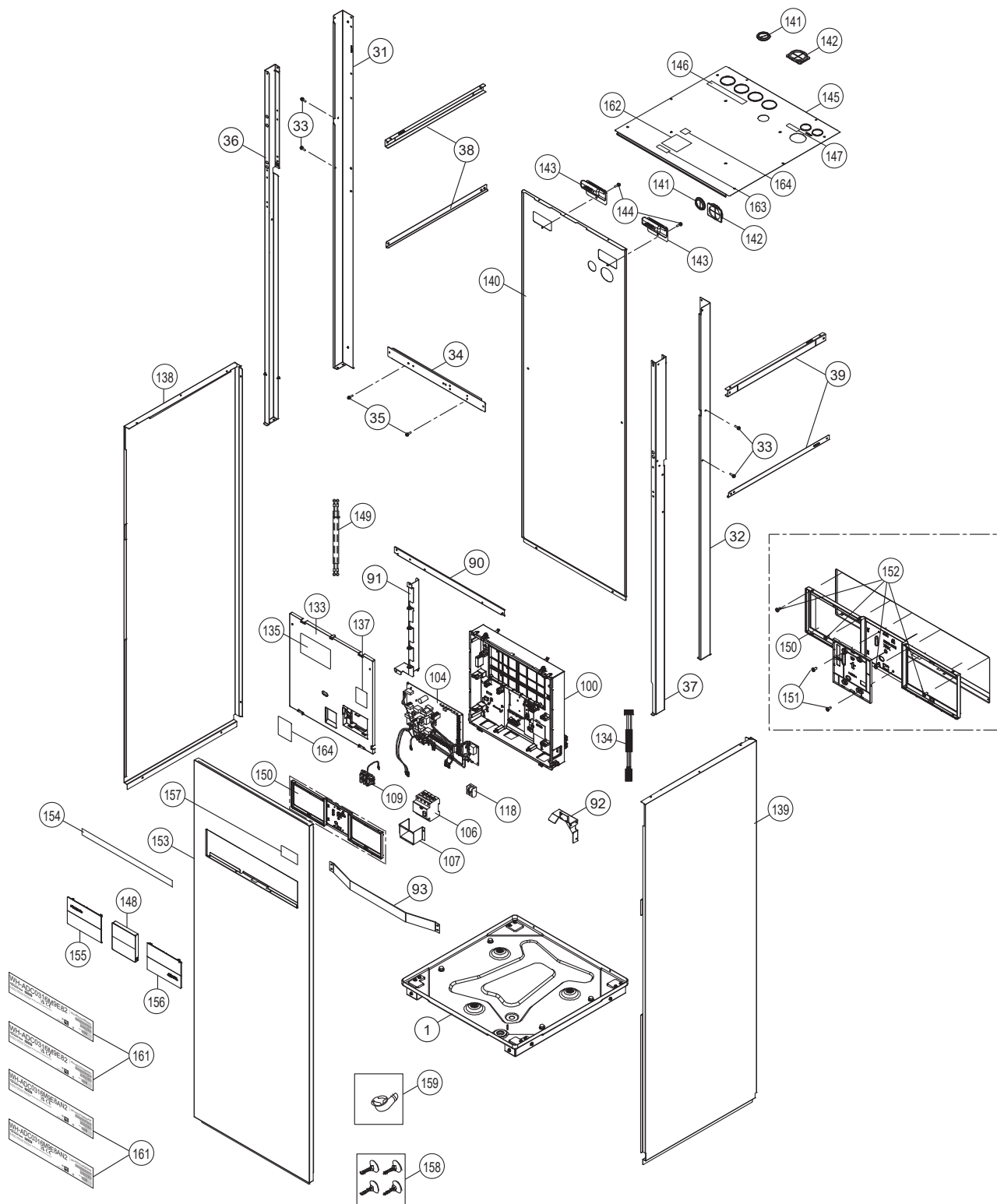


# 21. Exploded View and Replacement Parts List

## 21.1 Indoor Unit

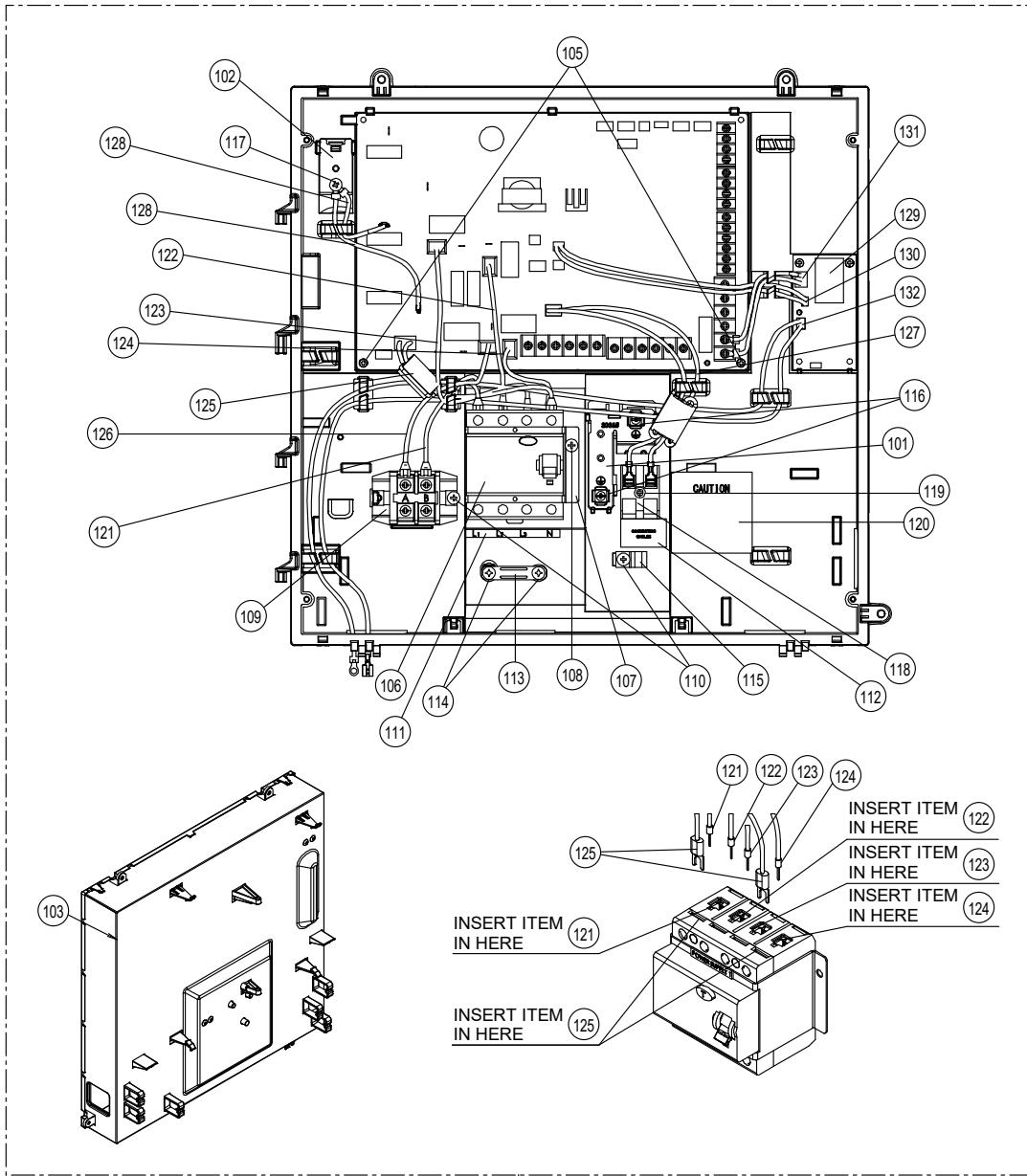


**Note:**  
 The above exploded view is for the purpose of parts disassembly and replacement.  
 The non-numbered parts are not kept as standard service parts.

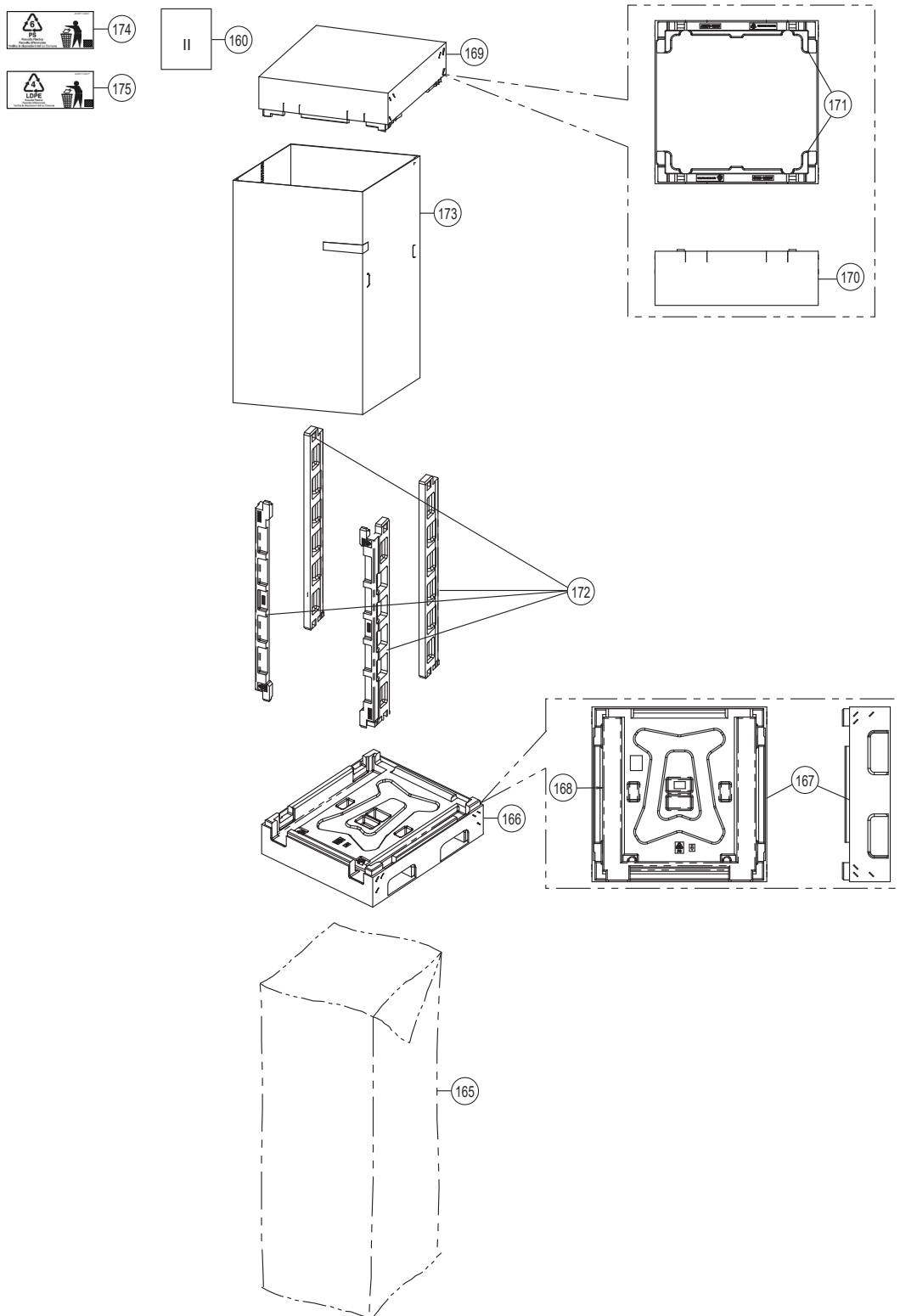


**Note:**

The above exploded view is for the purpose of parts disassembly and replacement. The non-numbered parts are not kept as standard service parts.

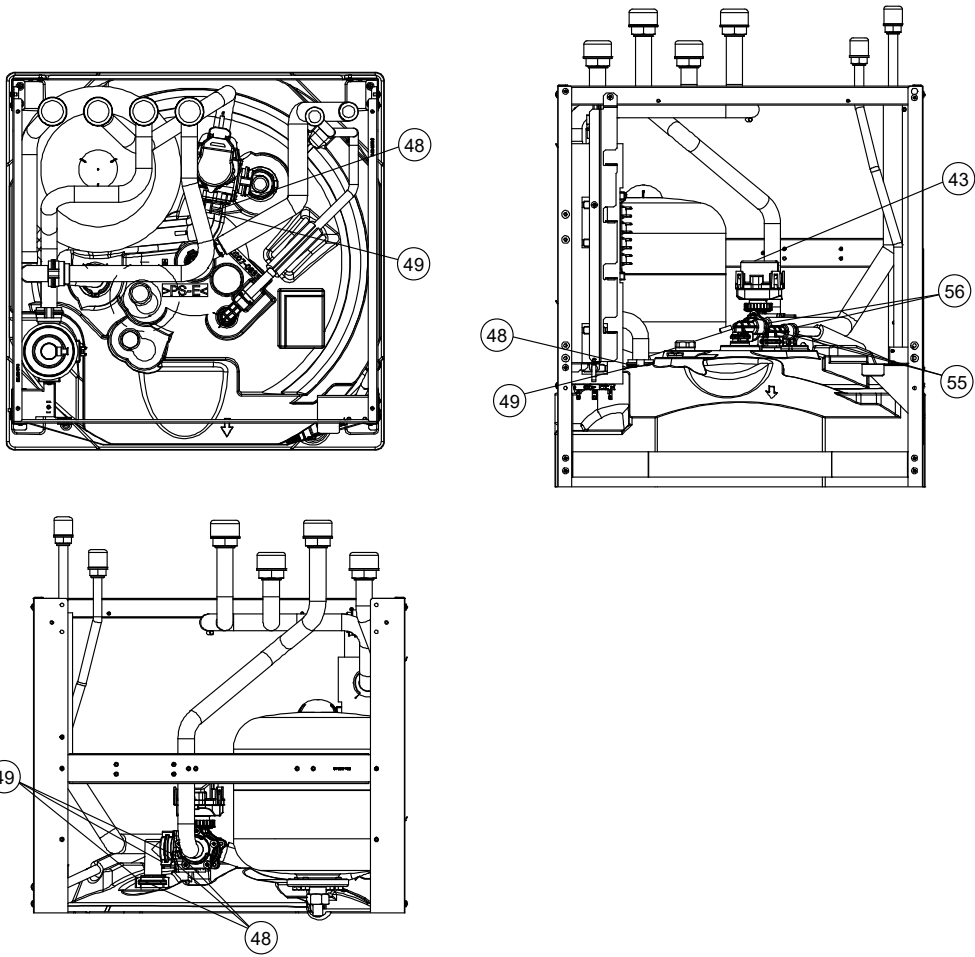


**Note:**  
 The above exploded view is for the purpose of parts disassembly and replacement.  
 The non-numbered parts are not kept as standard service parts.



**Note:**

The above exploded view is for the purpose of parts disassembly and replacement. The non-numbered parts are not kept as standard service parts.



DTL 1

**Note:**

The above exploded view is for the purpose of parts disassembly and replacement.  
The non-numbered parts are not kept as standard service parts.

SAFETY	REF. NO.	DESCRIPTION & NAME	QTY.	WH- ADC0316M9E82	WH- ADC0316M9E8AN2	REMARK
	1	CHASSIS - COMPLETE	1	ACXD50C04840	←	
	2	TUBE CONNECTOR	1	ACXT29-02570	←	
	3	PACKING	1	ACXB81-07070	←	
	4	NUT	1	ACXH56-01370	←	
	5	PACKING	5	ACXB81-00010	←	
	6	RETAINING RING	5	H581007	←	
	7	FOAMED POLYSTYRENE	1	ACXG07-07690	←	
	8	U-SHAPED PLATE	3	ACXD62-02690	←	
	9	SCREW	3	H551029J	←	
	10	FOAMED POLYSTYRENE	3	ACXG07-07750	←	
	11	TANK COMPLETE	1	ACXB56C01210	←	
	12	NON - COMBUSTIBLE FOAM	1	ACXG05-00540	←	
	13	CAP	1	H521306	←	
	14	CAP	1	ACXH52-04200	ACXH66-00190	
	15	FOAMED POLYSTYRENE	1	ACXG07-07700	←	
	16	FOAMED POLYSTYRENE	1	ACXG07-07710	←	
	17	FOAMED POLYSTYRENE	1	ACXG07-07720	←	
	18	FOAMED POLYSTYRENE	1	ACXG07-08350	←	
	19	PARTICULAR PIECE	2	D934023	←	
	20	STRAIGHT TUBE	2	T102044	←	
	21	NUT	4	H561116	←	
	22	SENSOR - COMPLETE (CN-TH2)	1	ACXA50C20700	←	
	23	PLATE SPRING	2	H711010	←	
	24	FOAMED POLYSTYRENE	2	ACXG07-07740	←	
	25	COCK - COMPLETE (DRAIN)	1	ACXB65C00111	←	
	26	SOCKET	1	ACXT27-00090	←	
	27	SOCKET	1	ACXT27-00020	←	
	28	VALVE BODY (SAFETY RELIEF VALVE)	1	ACXB62-00111	←	
	29	VALVE BODY (RBM SAFETY VALVE)	1	ACXB62-00920	←	
	30	TUBE ASSY	1	ACXT00-77551	←	
	31	L-SHAPED PLATE	1	ACXD60-04771	←	
	32	L-SHAPED PLATE	1	ACXD60-04781	←	
	33	SCREW	4	H551040J	←	
	34	CONNECTING BAR	1	ACXE26-02841	←	
	35	SCREW	2	H551217	←	
	36	U-SHAPED PLATE	1	ACXD62-02920	←	
	37	U-SHAPED PLATE	1	ACXD62-02712	←	
	38	L-SHAPED PLATE	2	ACXD60-04532	←	
	39	U-SHAPED PLATE	2	ACXD62-02720	←	
	40	FOAMED POLYSTYRENE	1	ACXG07-08360	←	
	41	FOAMED POLYSTYRENE	1	ACXG07-08400	←	
	42	TUBE ASSY	1	ACXT00-84190	←	
	43	VALVE BODY (3-WAY VALVE)	1	ACXB62-00092	←	

SAFETY	REF. NO.	DESCRIPTION & NAME	QTY.	WH-ADC0316M9E82	WH-ADC0316M9E8AN2	REMARK
	44	L-SHAPED TUBE	1	ACXT20-15030	←	
	45	TUBE ASSY	1	ACXT00-84170	←	
	46	SENSOR - COMPLETE (CN-TH1)	1	ACXA50C21100	←	
	47	PLATE SPRING	1	H711019	←	
	48	PACKING	5	ACXB81-06910	←	
	49	RETAINING RING	5	ACXH58-00370	←	
	50	RECEIVER	1	ACXB14-00840	←	
	51	TUBE ASSY	1	ACXT00-84400	←	
	52	PACKING	1	B811179	←	
	53	PACKING	1	ACXB81-07700	←	
	54	TUBE ASSY - COMPLETE	1	ACXT00C46860	←	
	55	SOCKET WITH FLANGE	1	T281049	←	
	56	RETAINING RING	1	ACXH58-00080	←	
	57	TUBE ASSY - COMPLETE	1	ACXT00C46990	←	
	58	POLY - E. FOAM	1	ACXE6A40-100	←	
	59	FOAMED POLYSTYRENE	1	ACXG07-08390	←	
	60	TUBE ASSY	1	ACXT00-84150	←	
	61	TUBE ASSY	1	ACXT00-84140	←	
	62	TUBE ASSY	1	ACXT00-84100	←	
	63	FOAMED POLYSTYRENE	1	ACXG07-08370	←	
	64	FOAMED POLYSTYRENE	1	ACXG07-08560	←	
	65	HEATER ASSY	1	ACXA34K00620	←	
	66	SOUND PROOF MATERIAL	1	ACXG30-10530CZ	←	
	67	THERMOSTAT	4	ACXA15-00260	←	
	68	U-SHAPED PIECE	1	D721031	←	
	69	MACHINE SCREW & WASHER ASSY	8	XYN3+C5FJ	←	
	70	LEAD WIRE - COMPLETE (FROM CN-OLP1)	1	ACXA61C00990	←	
	71	LEAD WIRE - COMPLETE (AC-L1 PCB)	1	ACXA61C01000	←	
	72	LEAD WIRE - COMPLETE (FROM TERMINAL B)	1	ACXA61C01010	←	
	73	LEAD WIRE - COMPLETE (FROM HT-L2 PCB)	1	ACXA61C01020	←	
	74	LEAD WIRE - COMPLETE (FROM HEATER 3)	1	ACXA60C58550	←	
	75	LEAD WIRE - COMPLETE (FROM HT-L3 PCB)	1	ACXA61C01040	←	
	76	LEAD WIRE - COMPLETE (FROM HEATER 2)	1	ACXA61C05340	←	
	77	TERMINAL COVER	1	H171051	←	
	78	PACKING	1	B811177	←	
	79	POLY - E. FOAM (FLAME PROOF - TERMINAL COVER)	1	EN5A15-40	←	
	80	LEAD WIRE - COMPLETE	3	ACXA61C01200	←	
	81	LEAD WIRE - COMPLETE	1	ACXA61C01230	←	
	82	MACHINE SCREW & WASHER ASSY	6	XYN4DC8FJ	←	
	83	VALVE BODY - COMPLETE	1	ACXB62C01130	←	
	84	VALVE BODY (DRAIN PLUG)	1	ACXB62-01220	←	
	85	PLUG (AIR PURGE)	1	ACXB82-00860	←	
	86	PACKING	1	ACXB81-00020	←	

SAFETY	REF. NO.	DESCRIPTION & NAME	QTY.	WH- ADC0316M9E82	WH- ADC0316M9E8AN2	REMARK
	87	PACKING	1	ACXB81-06810	←	
	88	PACKING	1	ACXB81-00110	←	
	89	RETAINING RING	1	H581038	←	
	90	CONNECTING BAR	1	ACXE26-03180	←	
	91	CONNECTING BAR	1	ACXE26-03170	←	
	92	PARTICULAR PLATE	1	ACXD90-30560	←	
	93	CONNECTING BAR	1	ACXE26-02880	←	
	94	FOAMED POLYSTYRENE	1	ACXG07-08610	←	
	95	FOAMED POLYSTYRENE	1	ACXG07-08620	←	
	96	FOAMED POLYSTYRENE	1	ACXG07-08380	←	
	97	FOAMED POLYSTYRENE	1	ACXG07-08600	←	
	98	ADH. POLY - E. FOAM	1	ACXG12-40850	←	
	99	CONTROL BOARD - COMPLETE	1	ACXH11C17160	ACXH11C17180	
	100	CONTROL BOARD	1	ACXH10-10390	←	
	101	PARTICULAR PLATE	1	ACXD90-30350	←	
	102	U-SHAPED PLATE	1	ACXD62-02950	←	
	103	BOX SHAPED PLATE	1	ACXD66-04340	←	
	104	ELECTRONIC CONTROLLER	1	ACXA74C06410	ACXA74C06420	
	105	MACHINE SCREW & WASHER ASSY	2	XTB3+8CFJ	←	
	106	CIRCUIT BREAKER	1	ACXA18-00021	←	
	107	U-SHAPED PIECE	1	ACXD72-00940	←	
	108	SELF TAPPING SCREW	1	XTT4+8CFJ	←	
	109	TERMINAL BOARD ASSY	1	A28K1238	←	
	110	SELF TAPPING SCREW (TERMINAL BOARD)	1	XTT4+12CFJ	←	
	111	INDICATION LABEL (L1, L2, L3, N)	1	ACXF71-35080	←	
	112	INDICATION LABEL (CONNECTING CABLE)	1	ACXF71-31170	←	
	113	HOLDER - P.S. CORD	1	H31103	←	
	114	SELF TAPPING SCREW	2	XTT4+16GFJ	←	
	115	HOLDER - P.S. CORD	1	H31042	←	
	116	WASHER	2	H57094	←	
	117	SELF TAPPING SCREW	1	XTT4+8FFJ	←	
	118	TERMINAL BOARD ASSY	1	A28K1064J	←	
	119	SELF TAPPING SCREW	1	XTN4+20CFJ	←	
	120	CAUTION LABEL	1	ACXF75-14410	←	
	121	LEAD WIRE - COMPLETE	1	ACXA61C01090	←	
	122	LEAD WIRE - COMPLETE	1	ACXA61C01100	←	
	123	LEAD WIRE - COMPLETE	1	ACXA61C01780	←	
	124	LEAD WIRE - COMPLETE	1	ACXA61C01120	←	
	125	LEAD WIRE - COMPLETE	1	ACXA61C03550	←	
	126	LEAD WIRE - COMPLETE	1	ACXA61C01130	←	
	127	LEAD WIRE - COMPLETE	1	ACXA61C01140	←	
	128	LEAD WIRE - COMPLETE	2	ACXA61C01150	←	
	129	ELECTRONIC CONTROLLER (ANODE)	1	-	ACXA73-48210-W	



SAFETY	REF. NO.	DESCRIPTION & NAME	QTY.	WH-ADC0316M9E82	WH-ADC0316M9E8AN2	REMARK
	130	LEAD WIRE - COMPLETE	1	-	ACXA61C01030	
	131	LEAD WIRE - COMPLETE	1	-	ACXA61C01240	
	132	LEAD WIRE - COMPLETE	1	-	ACXA60C96020	
	133	CONTROL BOARD COVER	1	ACXH13-09660	←	
	134	LEAD WIRE - COMPLETE (NETWORK ADAPTOR CN-CNT2)	1	ACXA61C01190	←	
	135	WIRING DIAGRAM	1	ACXF29-01020	ACXF29-01030	
	136	INDICATION LABEL	1	ACXF71-35090	←	
	137	CAUTION LABEL	1	ACXF75-15040	←	
	138	CABINET SIDE PLATE - LEFT	1	ACXE04-13290A	←	
	139	CABINET SIDE PLATE - RIGHT	1	ACXE04-13300A	←	
	140	CABINET REAR PLATE	1	ACXE02-03610	←	
	141	PACKING	2	ACXB81-00030	←	
	142	PACKING	2	ACXB81-00040	←	
	143	HANDLE	2	ACXE16-00300	←	
	144	SCREW	2	ACXH55-07220	←	
	145	CABINET TOP PLATE	1	ACXE03-05040	←	
	146	INDICATION LABEL (CIRCUIT CONNECTION LABEL)	1	ACXF71-34610	←	
	147	INDICATION LABEL (SHOWER CONNECTION LABEL)	1	ACXF71-34620	←	
	148	REMOTE CONTROL SWITCH - COMPLETE	1	ACXA75C26380	←	
	149	LEAD WIRE - COMPLETE (CONTROL PANEL)	1	ACXA60C99510	←	
	150	BOX SHAPED PLATE	1	ACXD66-03970	←	
	151	SELF TAPPING SCREW	2	XTB4+8CFJ	←	
	152	SELF TAPPING SCREW	4	XTB4+8FFJ	←	
	153	CABINET FRONT PLATE	1	ACXE06-05161A	←	
	154	PACKING	1	ACXB81-07400	←	
	155	DECORATION BASE ASSY	1	ACXE35K03630	←	
	156	DECORATION BASE ASSY	1	ACXE35K03640	←	
	157	INDICATION LABEL (AQUARE SMART CLOUD)	1	ACXF71-03400	←	
	158	ACCESSORY - ADJUSTABLE FEET	1	H82C2112	←	
	159	ACCESSORY - DRAIN ELBOW	1	G87C900	←	
	160	INSTALLATION INSTRUCTION COMPLETE	1	ACXF60C20290	ACXF60C20860	
	161	MODEL LABEL	2	ACXF87-14890	ACXF87-14940	
	162	NAME PLATE	1	ACXF09-09390	ACXF09-09400	
	163	INDICATION LABEL (PRODUCTION DATE)	1	ACXF70-70060	←	
	164	INDICATION LABEL (FIRE CAUTION)	1	F746943	←	
	165	BAG	1	ACXG86-04782	←	
	166	BASE BOARD - COMPLETE	1	ACXG62C02790	←	
	167	CORRUGATED CARDBOARD	1	ACXG57-09490	←	
	168	SHOCK ABSORBER	1	ACXG70-15200	←	
	169	TOP BOARD COMPLETE	1	ACXG60C00300	←	
	170	CORRUGATED CARDBOARD	1	ACXG57-12320	←	
	171	SHOCK ABSORBER	2	ACXG70-15210	←	

SAFETY	REF. NO.	DESCRIPTION & NAME	QTY.	WH- ADC0316M9E82	WH- ADC0316M9E8AN2	REMARK
	172	SHOCK ABSORBER	4	G713134	←	
	173	C.C. CASE	1	ACXG50-61792	←	
	174	INDICATION LABEL	4	ACXF71-09051	←	
	175	INDICATION LABEL	1	ACXF71-09061	←	

**Note:**

- All parts are supplied from PHVACCZ, Czech (Vendor Code: 00029407).
- "O" marked parts are recommended to be kept in stock.